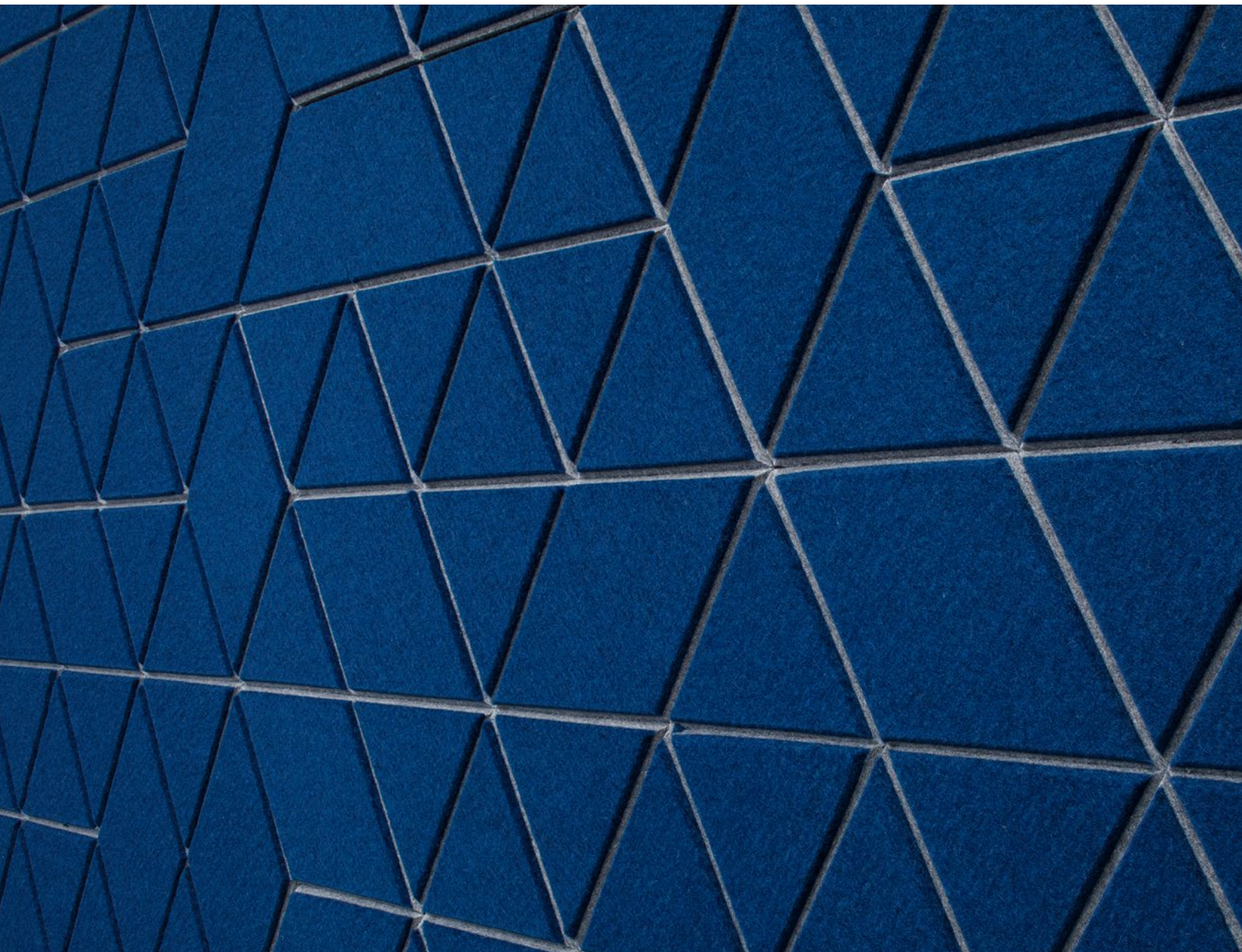




Hive 2

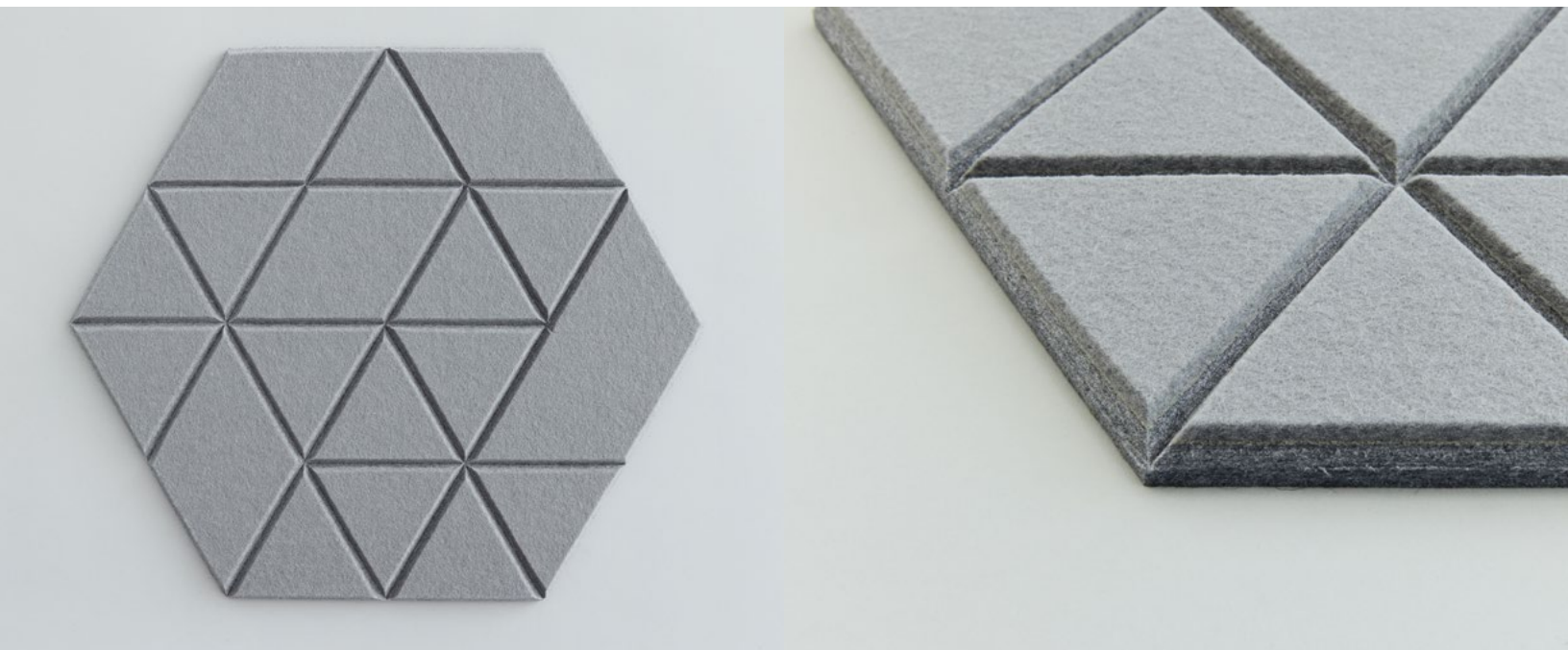
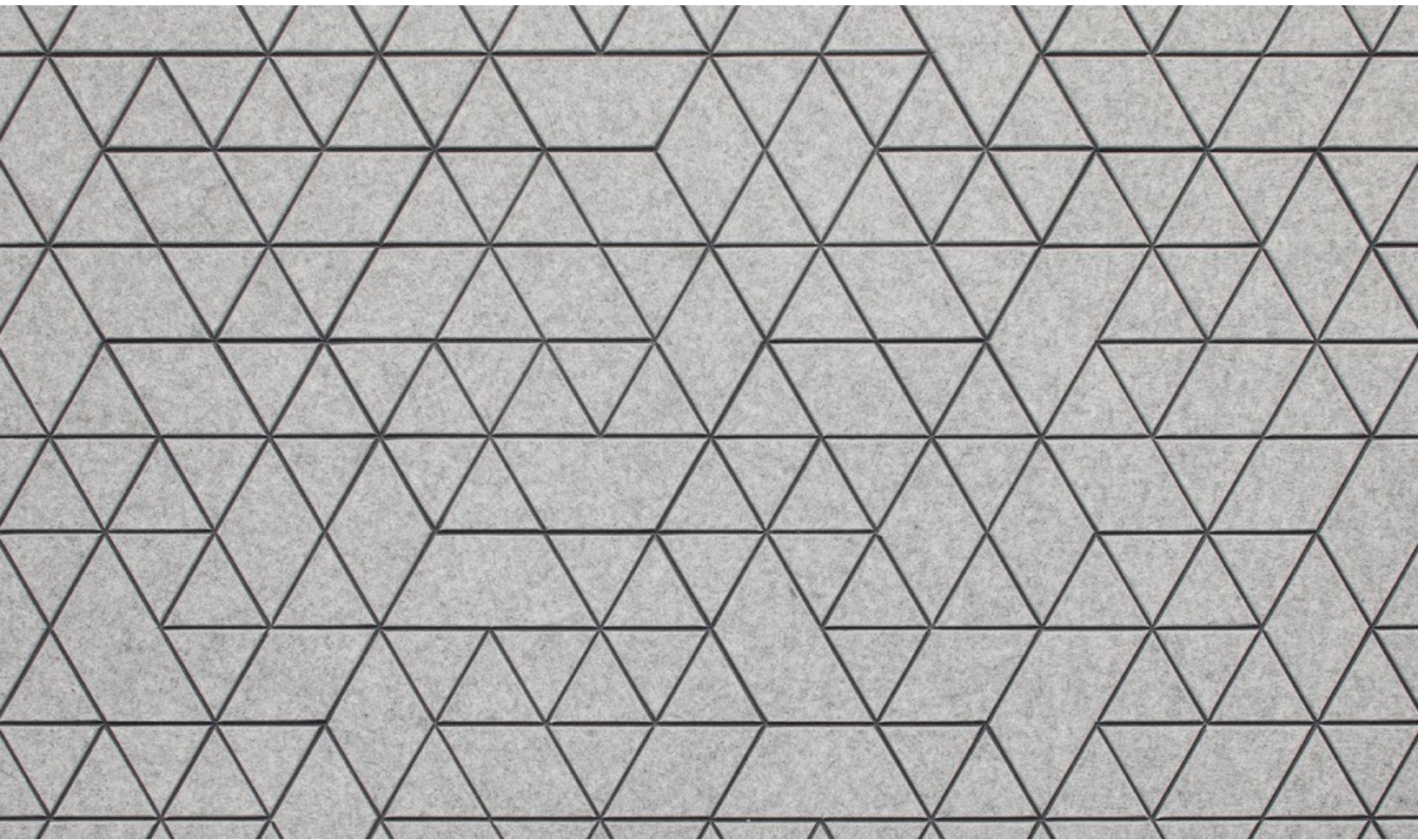
Acoustic Wall Tile

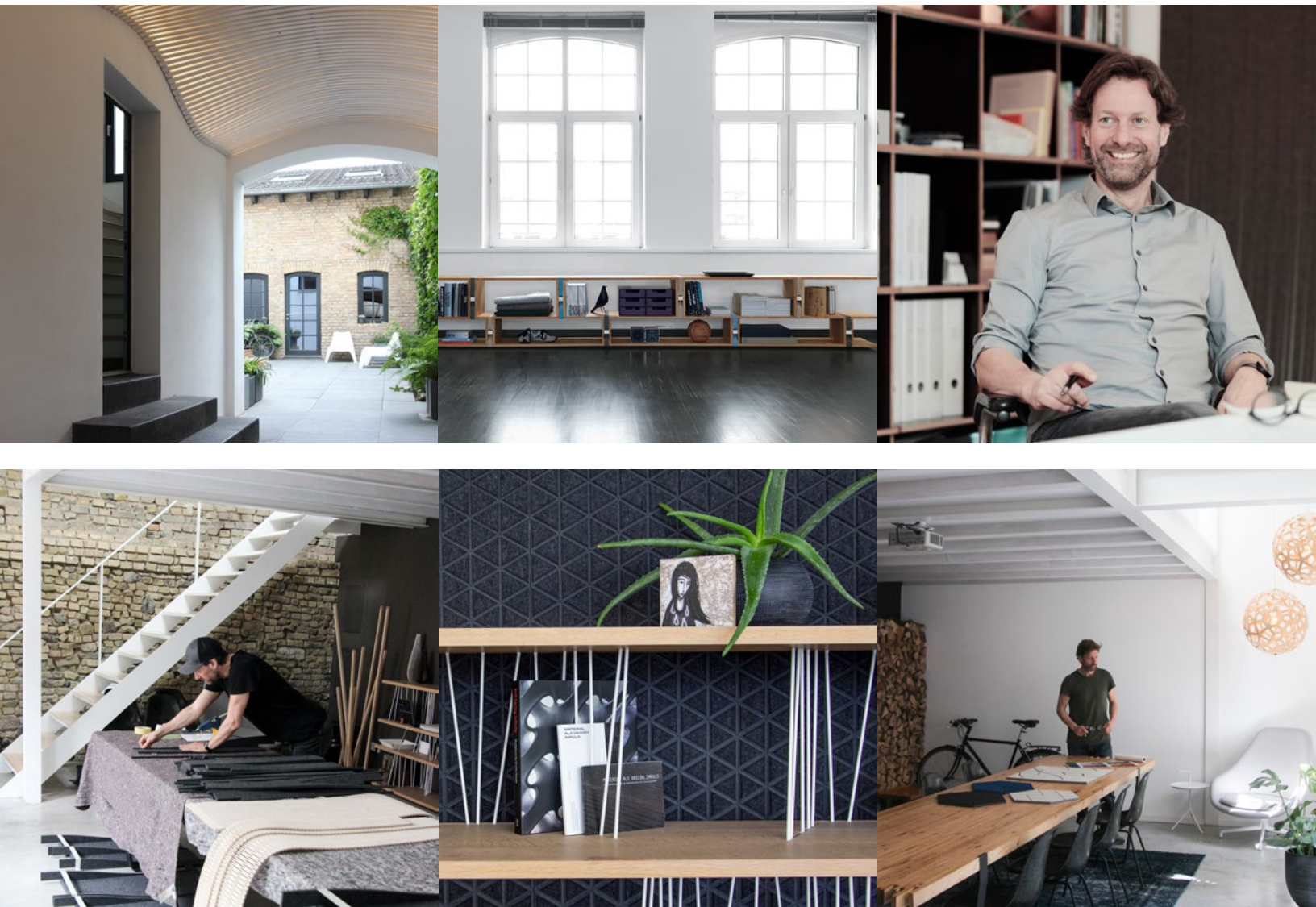


Hive 2 is the bee's knees.

Hive 2 is the bee's knees with its randomized patterning. Inspired by honeycombs and the cells that make up their structure, this acoustic wall system is composed of a single hexagonal tile that rotates and repeats seamlessly to create an overall pattern greater than its parts. Together, these graphic tiles deliver some serious sound-absorbing oomph while providing playful patterning.

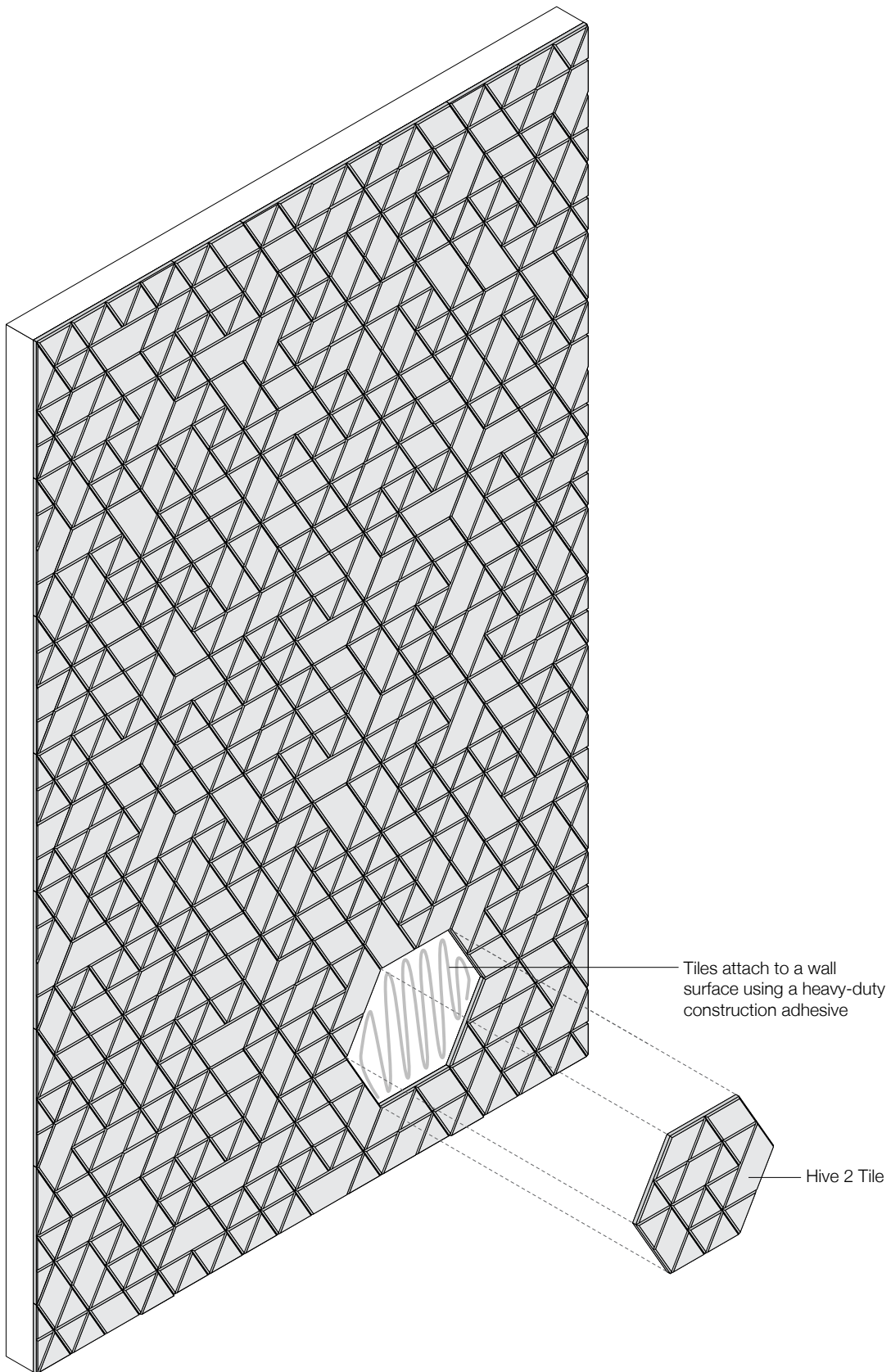
Hive 2 was designed by Bernd Benninghoff, a furniture designer and interior architect based in Mainz, Germany.





“My goal is to develop products that are easy to manufacture and to install – but at the same time generate a strong three-dimensional surface that creates a warm atmosphere and plays with light and shadow.”

– Bernd Benninghoff, designer of Hive 2



Exploded Axonometric

Product	Hive 2
Designer	Bernd Benninghoff
Content	100% Wool Design Felt + Akustika 10 Substrate (60% post-consumer recycled content)
Tile Size	1'-6" x 1'-3 5/8" (45.7 x 39.6 cm)
Thickness	1/2 in (13 mm)
Thickness Tolerance	±1/16 in (2 mm)
Edges	Chamfered
Colors	1-Color per wall
Custom	2-Color or more per wall is available and must be quoted
Durability	Contract or residential
Lead Time	Made to order and certain lead times will apply
Installation	Each order includes one standard tile that may be rotated up to six ways to create a random pattern. Install using a heavy-duty construction adhesive and may be trimmed to size with a utility knife. For wall-to-wall installations, add 15% overage. Refer to Hive 2 Installation Instructions for complete guidance.
Maintenance	Vacuum occasionally to remove general air-borne debris. Should soiling occur, spot clean with mild soap and lukewarm water. Avoid aggressive rubbing as this can continue the felting process and change the surface appearance of the felt. Refer to Product Maintenance + Cleaning for detailed care instructions.
Variation	Wool felt is a natural material and color variation and inclusions of natural fiber on the surface are evidence of the 100% natural origin of the material. Product color is only indicative, as it is not possible to assure consistency of color in a natural product due to the natural color of raw wool and absorption of dyes. Color matching cannot be guaranteed on shipments and variation will be more pronounced beyond the normal commercial range.
Environmental	100% Wool Design Felt is 100% biodegradable/compostable and Akustika 10 contains minimum 60% post-consumer recycled content and is 100% recyclable Contains no formaldehyde, 100% VOC free, no chemical irritants, and free of harmful substances 100% Wool Design Felt and Akustika 10 contribute to LEED® Download Declare Label Living Building Challenge Criteria Compliant Oeko-Tex® Standard 100 Certified Product Class II (100% Wool Design Felt + Akustika 10 Substrate) Meets VOC test limits for the CDPH v1.2 method
Acoustics	ASTM C 423: NRC – 0.50, SAA – 0.51
Colorfastness to Light	Class 4–5 (40 hours)
Colorfastness to Crocking	Class 3–4 (wet), Class 4–5 (dry)
Flammability	Test reports available upon request

Standard Colors

100% Wool Design Felt

							
487 Pfirsich	023 Koralle	945 Drachenfrucht	221 Himbeere	136 Weinrot	209 Bordeaux	102 Kirsche	201 Rot
							
125 Tomate	179 Hellrot	180 Terracotta	173 Mango	105 Rost	573 Kupfer	116 Orange	495 Abricot
							
124 Gelb	131 Honig	509 Kamel	550 Ocker	274 Senf	108 Zitrone	403 Mais	535 Sesam
							
203 Vanille	027 Kartause	384 Lind	713 Kiwi	377 Maigrün	732 Farn	378 Oliv	260 Sprießen
							
343 D'Grün	435 Smaragd	625 Pinie	248 Jade	472 Minze	575 Salbei	483 Adria	548 Türkis
							
312 Lagune	345 Pazifik	308 Petrol	698 Dunst	405 Stahl	215 Meer	540 Ozean	533 Indigo
							
282 D'Blau	111 Traube	626 Azur	647 Kobalt	686 Enzian	272 Royal	286 H'Blau	995 Wasser
							
458 Bewölkt	284 Himmel	613 Gletscher	551 Eis	113 Immergrün	099 Lila	667 Amethyst	269 Violett
							
242 Pink	640 Granat	634 Erröten	671 Pfingstrose	255 Flieder	437 Aubergine	250 Trüffelbraun	220 Rehbraun
							
411 Alpaka	190 Natur-meliert	200 Natur	331 Sahara	311 Mandel	467 Sand	481 Sandstein	100 Wollweiß
							
110 Rohweiß	160 Beige	529 Champagner	150 Weiß	428 Silber	427 Stein	021 Beton	170 Asche
							
423 Hellgrau	408 Taupe	175 Graphit	425 Taubengrau	446 Kohle	300 Anthrazit	426 Schwarz	

Akustika 10 Substrate

		
05 Ice	02 Medium Grey	03 Dark Grey