

# Checker

Acoustic Wall Tile



filzfelt

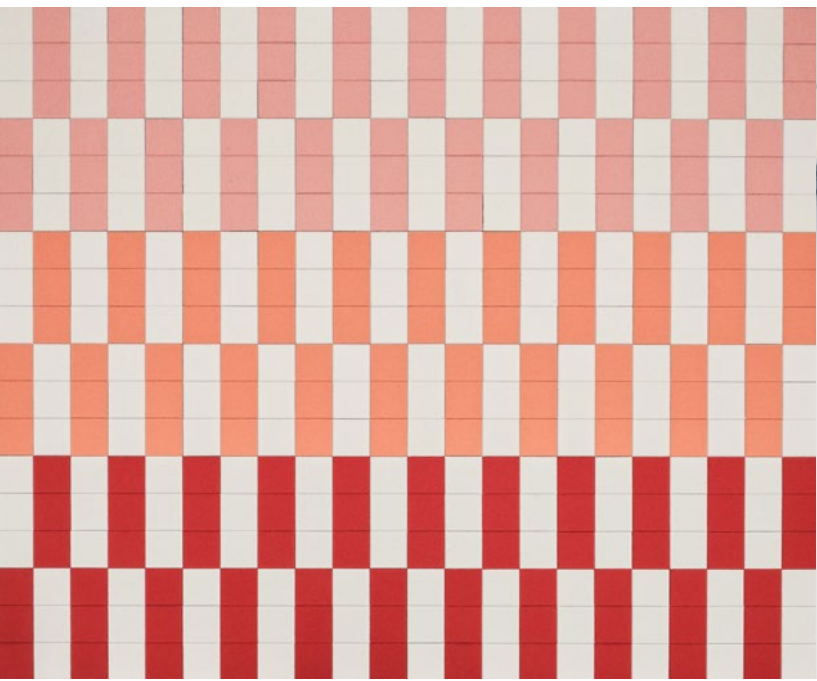
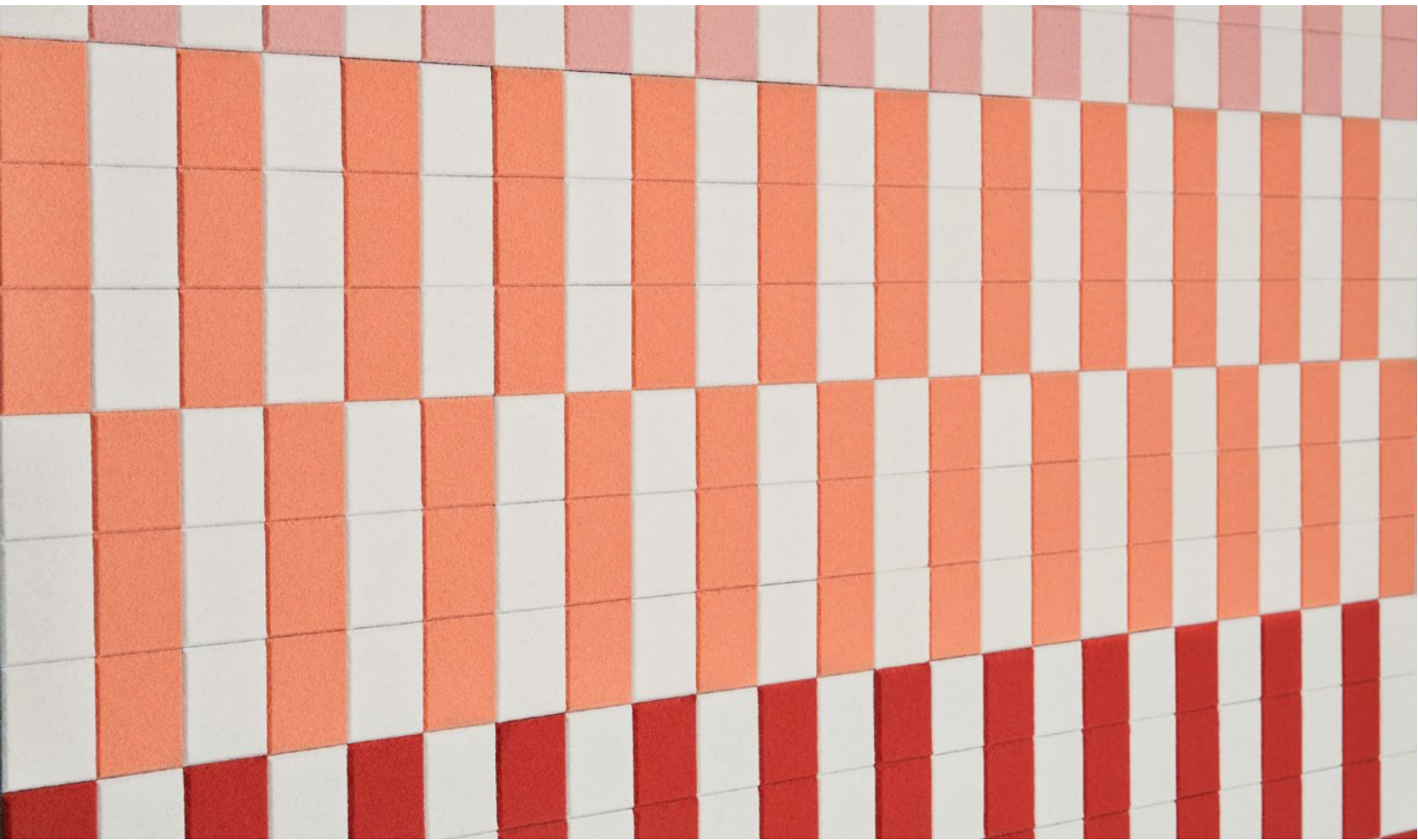




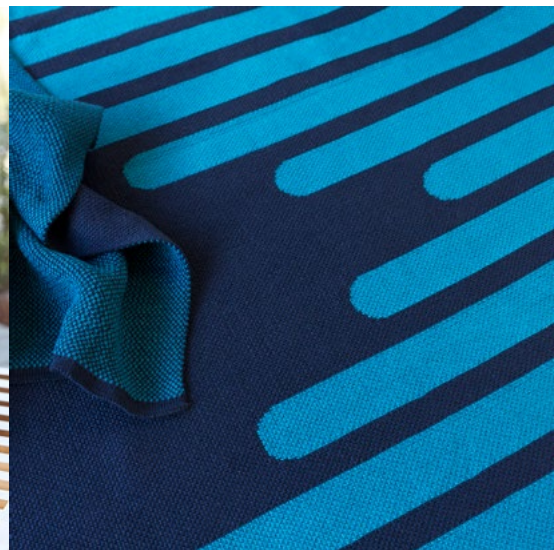
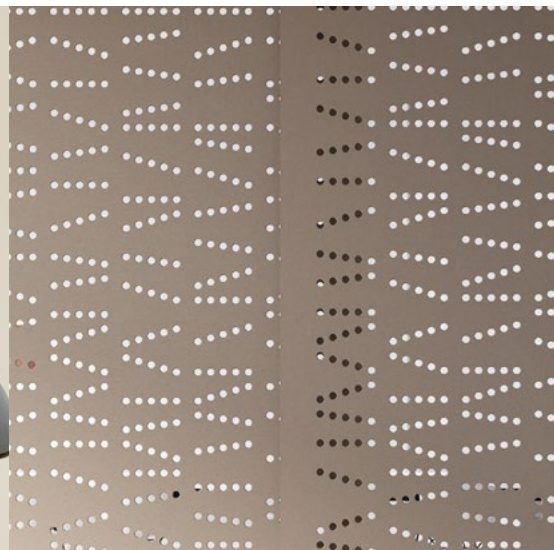
Checker takes  
sound absorption to  
staggering heights.

Checker is an acoustic wallcovering that puts a contemporary twist on a classic motif. With over ninety colors of pure wool felt to build your playful patterning, Checker helps lower the volume—and is super easy to install.

Checker was designed by Kelly Harris Smith, a textile and product designer who specializes in natural, sustainable, and recycled materials.

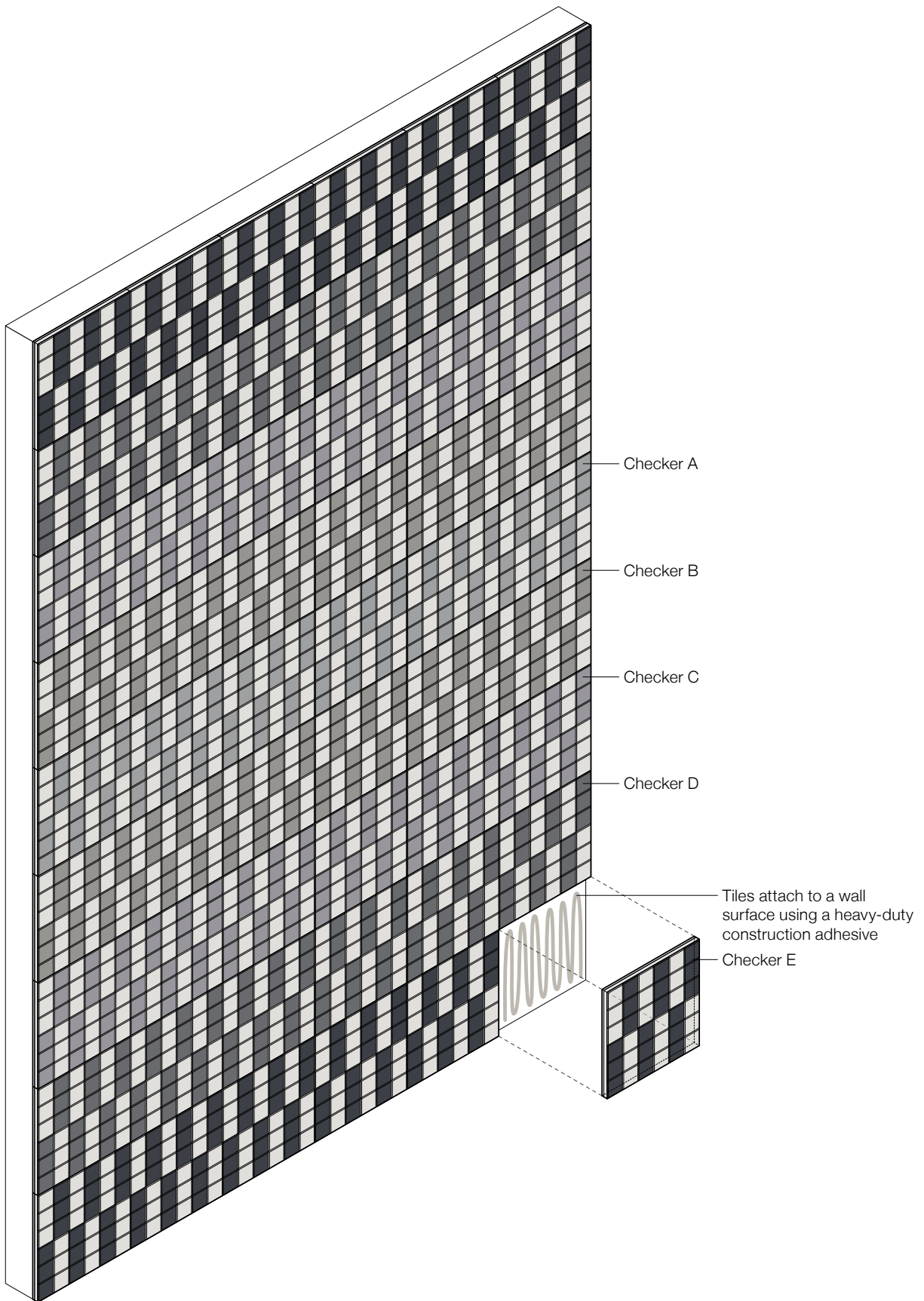




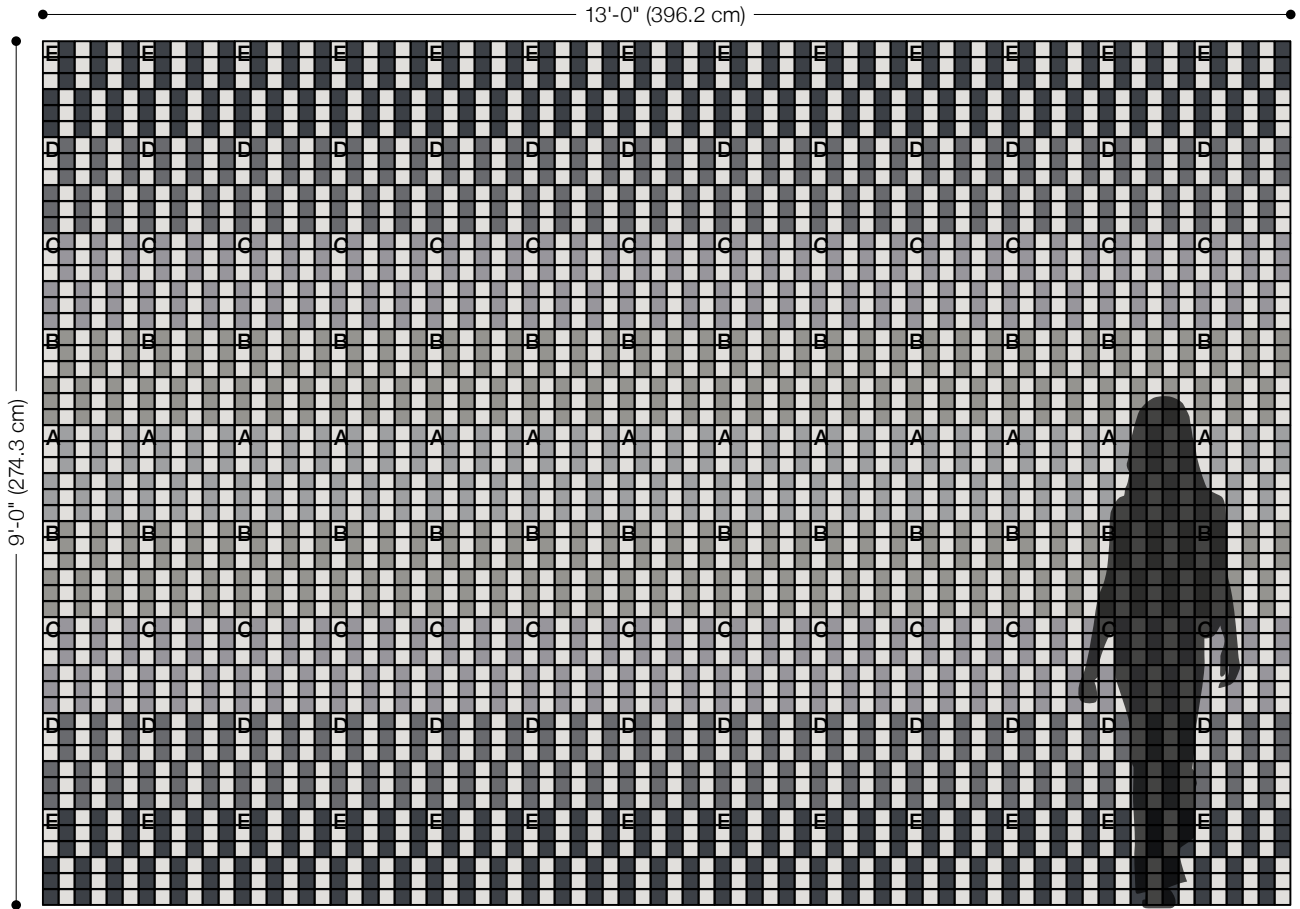


"I find inspiration almost everywhere I go. Whether it's the color of the sky at a particular moment, the texture of a manhole cover or the patterning on a facade, I'm constantly recording. Depending on the type of project, I photograph, sketch, collage and even stitch my ideas before moving to conceptual drawings."

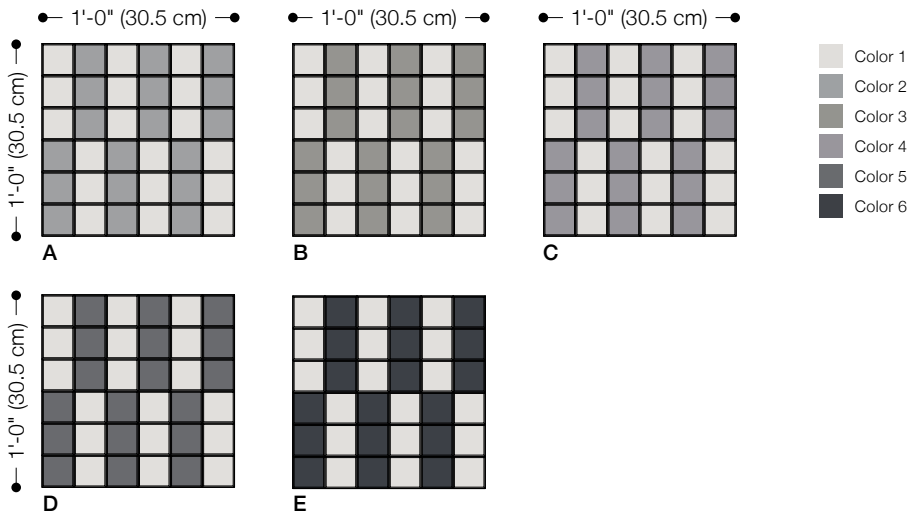
– Kelly Harris Smith, designer of Checker



**Exploded Axonometric**



**Standard Pattern**



**Standard Tiles**

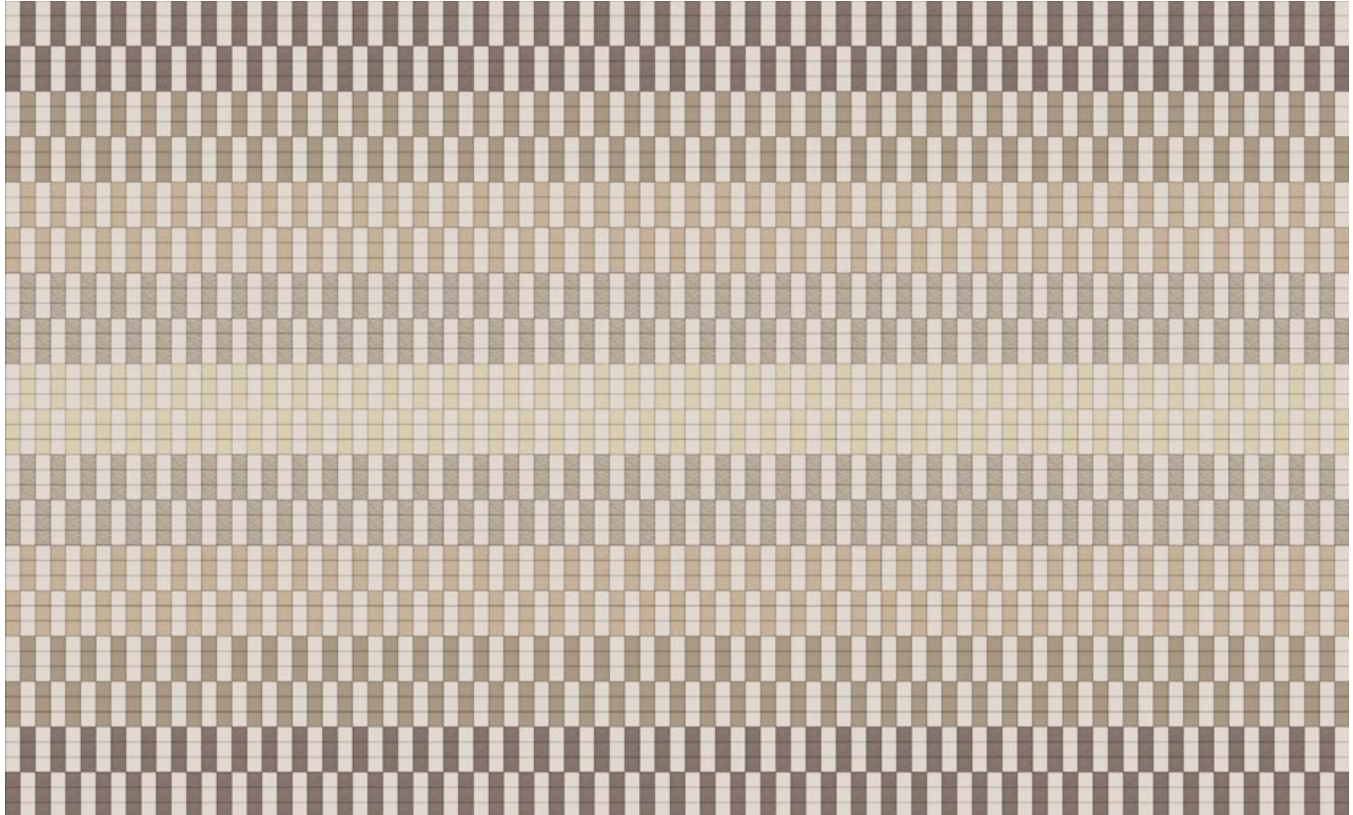
Five Modules in Standard Pattern



# Suggested Colorways

Checker is customizable in over ninety colors of 100% Wool Design Felt. The following pages include suggested colorways to serve as a source for inspiration. Use the key below to identify the position of a color in each colorway. We recommend referencing physical samples when making final color selections.

Have your own ideas? Head to the **Design Tool** to build your own unique wall and select from over ninety colors.



**Checker Suggested Colorway 01**  
(See rendering on page 2)

•1'-0" (30.5 cm)•   •1'-0" (30.5 cm)•   •1'-0" (30.5 cm)•

•1'-0" (30.5 cm)•

•1'-0" (30.5 cm)•

**A**

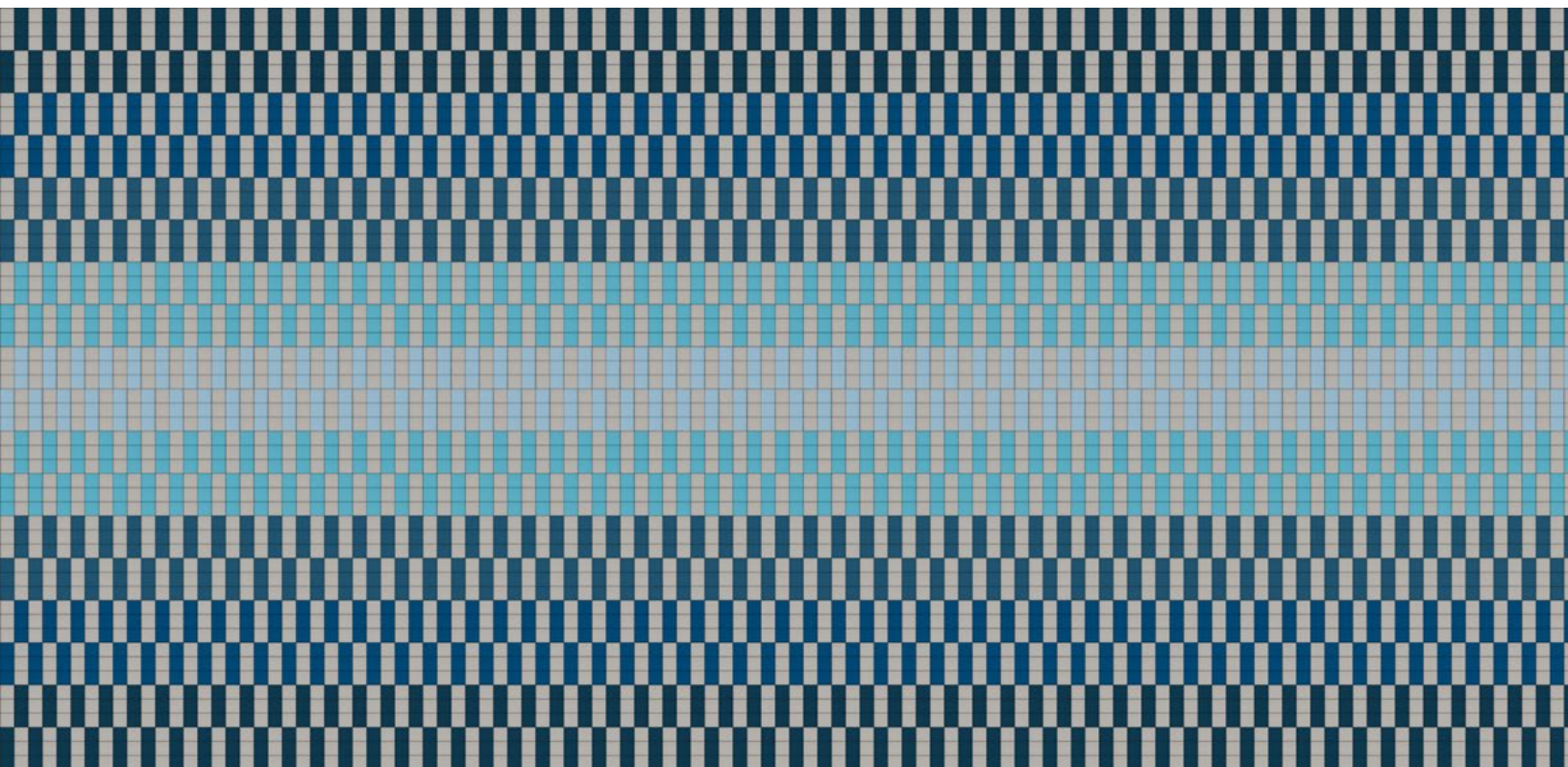
**B**

**C**

- Color 1: 100 Wollweiß
- Color 2: 110 Rohweiß
- Color 3: 160 Beige
- Color 4: 481 Sandstein
- Color 5: 529 Champagner
- Color 6: 408 Taupe

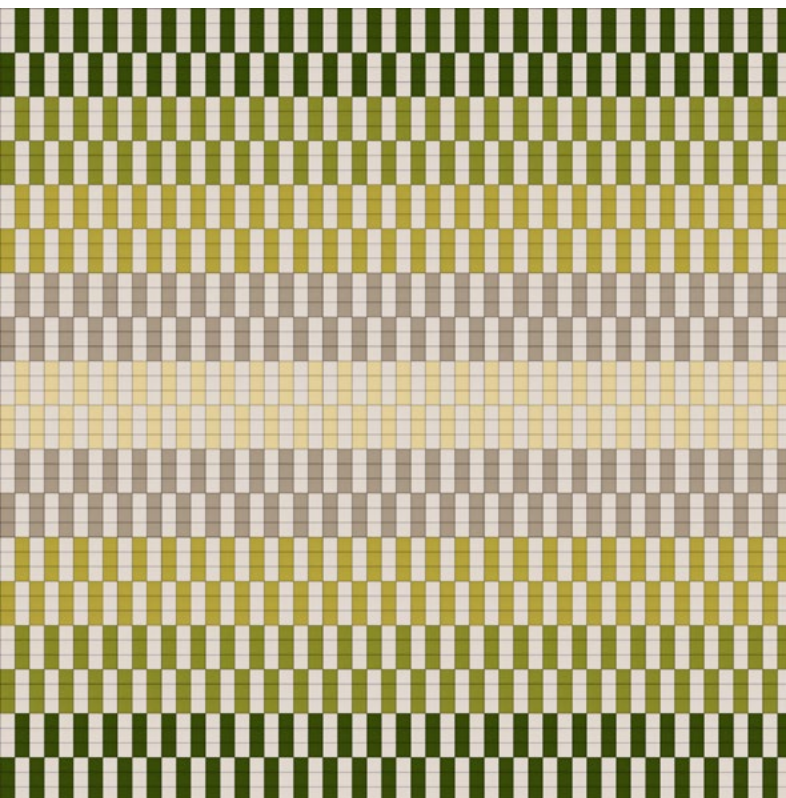
**Standard Tiles**  
Five Modules in Standard Pattern





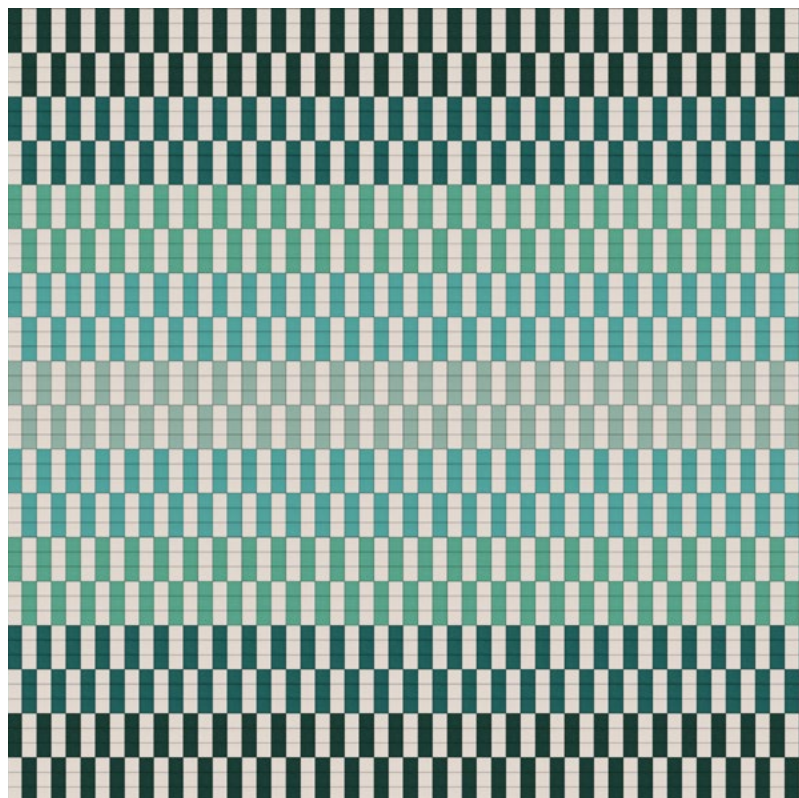
**Checker Suggested Colorway 02**

Color 1: 428 Silber, Color 2: 551 Eis, Color 3: 458 Bewölkt,  
Color 4: 698 Dunst, Color 5: 308 Petrol, Color 6: 215 Meer



**Checker Suggested Colorway 03**

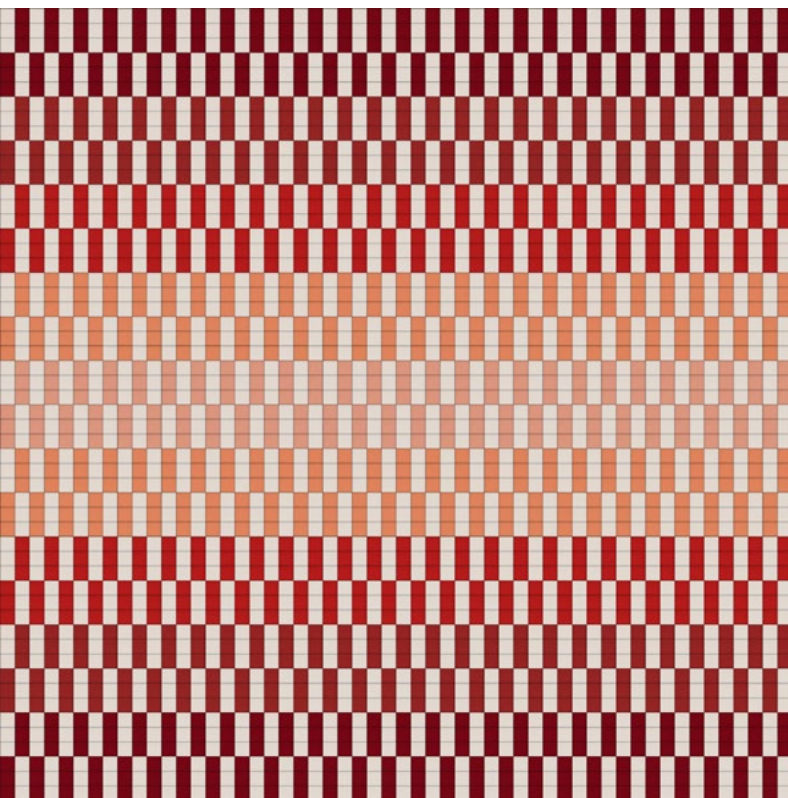
Color 1: 100 Wollweiß, Color 2: 535 Sesam, Color 3: 529 Champagner,  
Color 4: 027 Kartause, Color 5: 384 Lind, Color 6: 378 Oliv



**Checker Suggested Colorway 04**

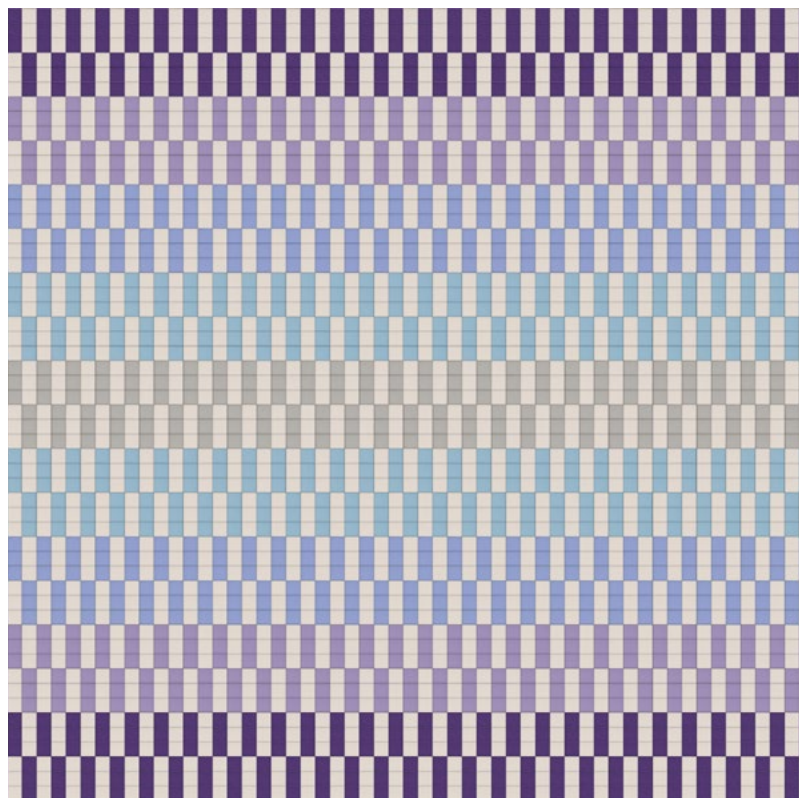
Color 1: 100 Wollweiß, Color 2: 575 Salbei, Color 3: 472 Minze,  
Color 4: 248 Jade, Color 5: 625 Pinie, Color 6: 435 Smaragd





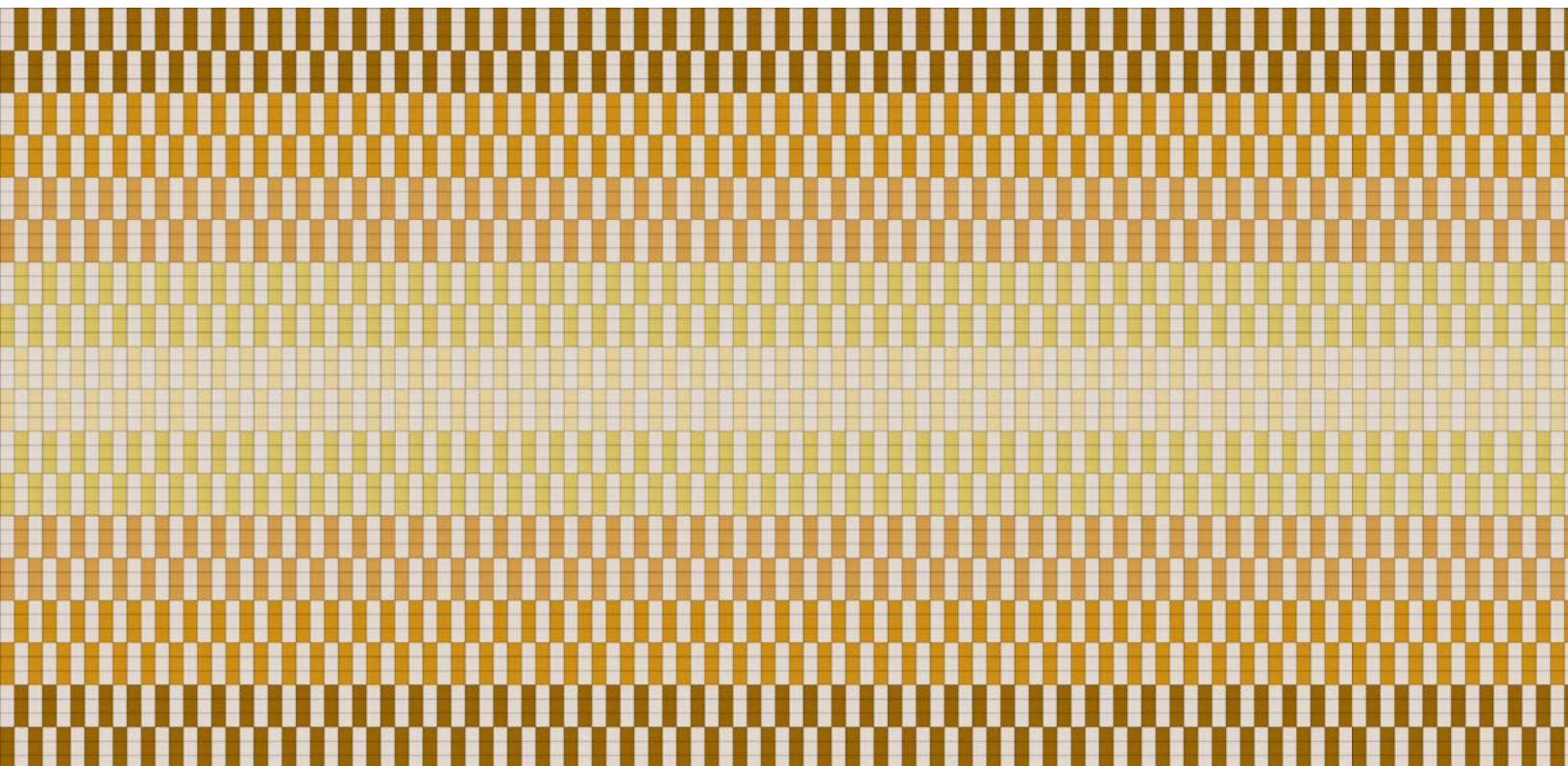
**Checker Suggested Colorway 05**

Color 1: 100 Wollweiß, Color 2: 023 Koralle, Color 3: 487 Pfirsich,  
Color 4: 173 Mango, Color 5: 180 Terracotta, Color 6: 201 Rot  
(See photography on page 3)



**Checker Suggested Colorway 06**

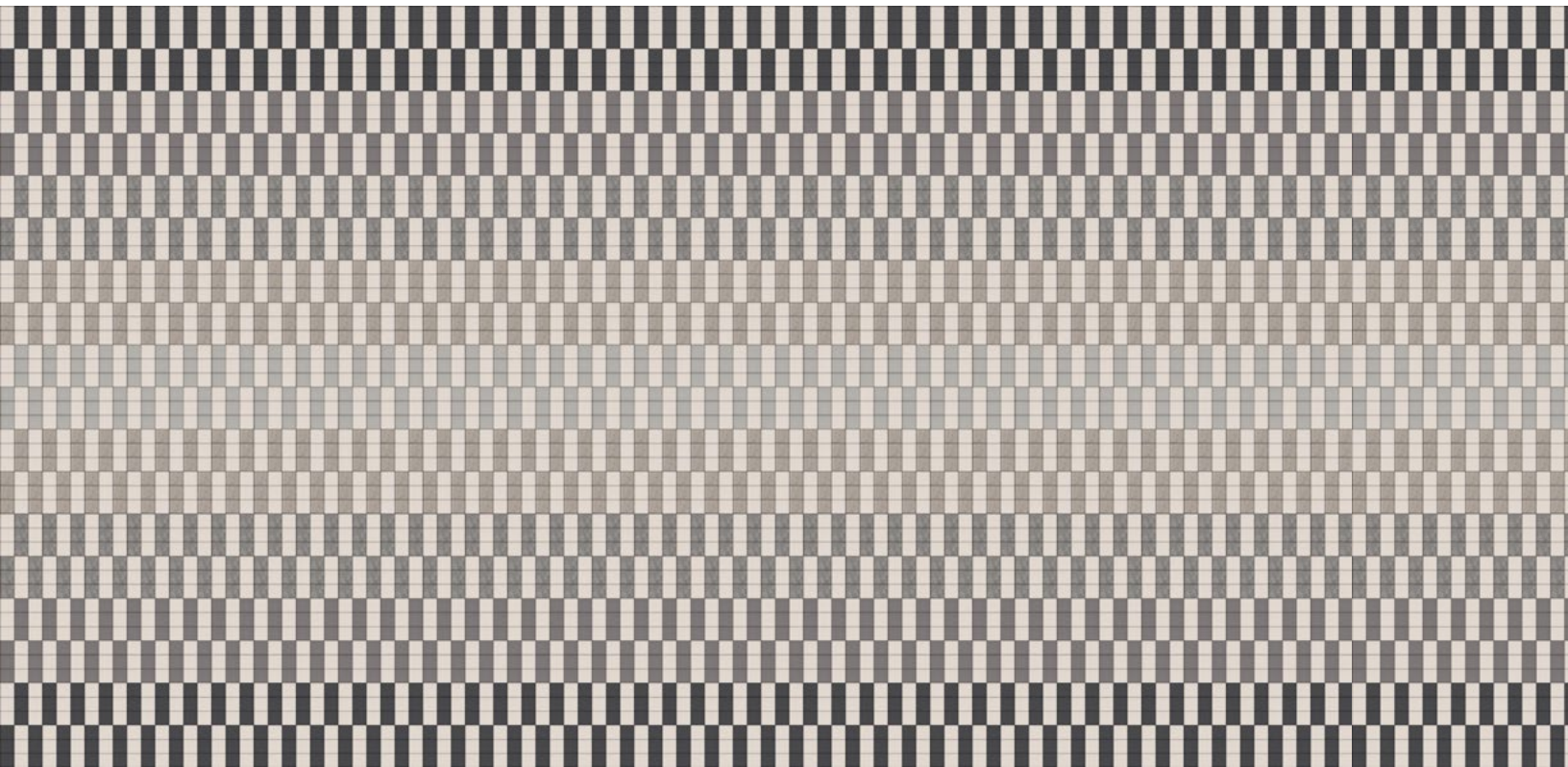
Color 1: 100 Wollweiß, Color 2: 428 Silber, Color 3: 551 Eis,  
Color 4: 113 Immergrün, Color 5: 099 Lila, Color 6: 667 Amethyst



**Checker Suggested Colorway 07**

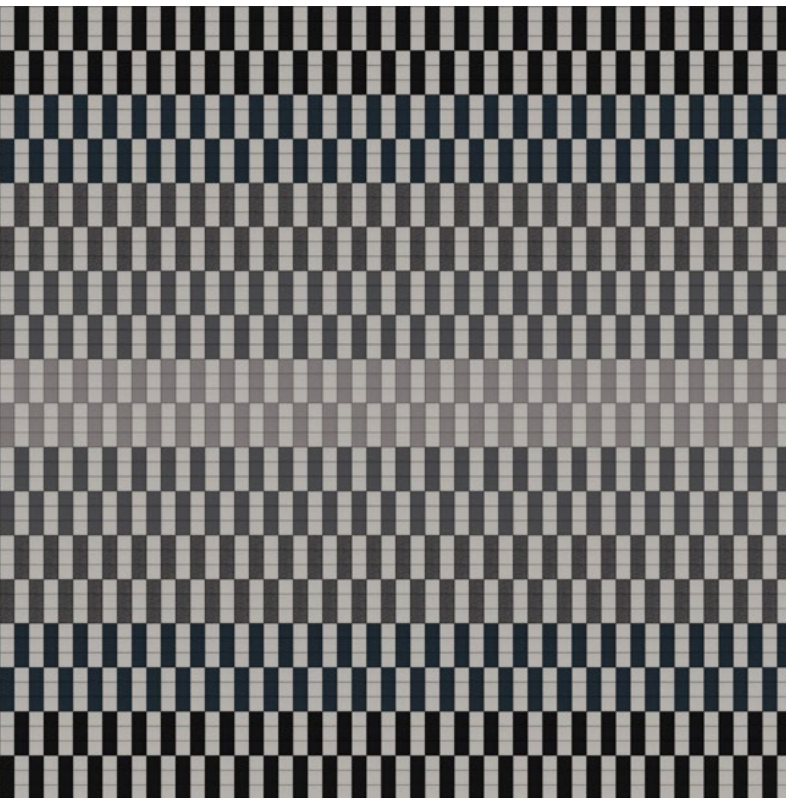
Color 1: 100 Wollweiß, Color 2: 535 Sesam, Color 3: 403 Mais,  
Color 4: 131 Honig, Color 5: 509 Kamel, Color 6: 550 Ocker





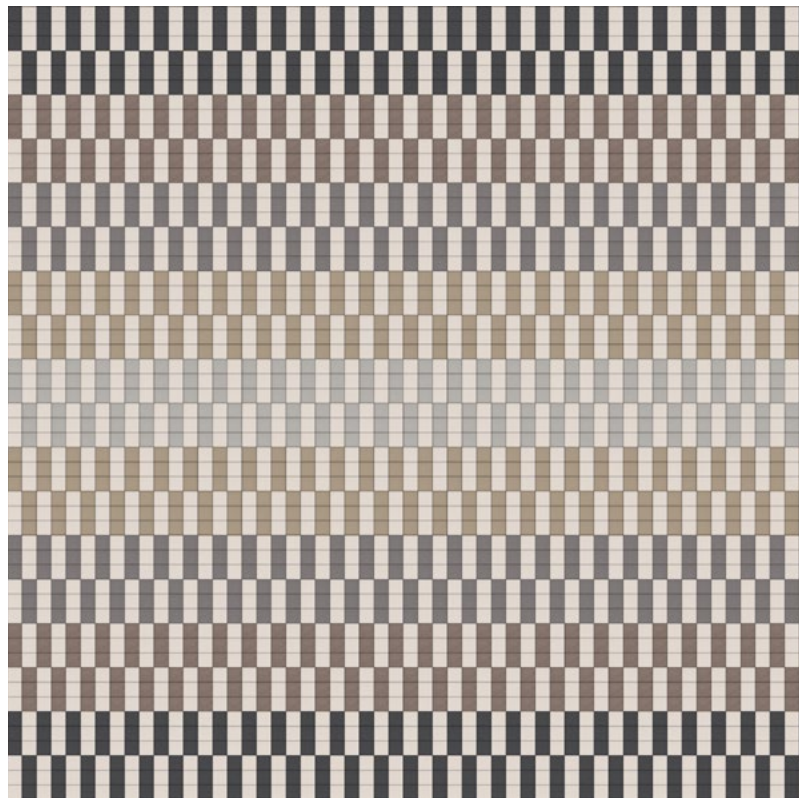
**Checker Suggested Colorway 08**

Color 1: 100 Wollweiß, Color 2: 428 Silber, Color 3: 427 Stein,  
Color 4: 170 Asche, Color 5: 423 Hellgrau, Color 6: 425 Taubengrau



**Checker Suggested Colorway 09**

Color 1: 428 Silber, Color 2: 423 Hellgrau, Color 3: 425 Taubengrau,  
Color 4: 175 Graphit, Color 5: 446 Kohle, Color 6: 426 Schwarz



**Checker Suggested Colorway 10**

Color 1: 100 Wollweiß, Color 2: 428 Silber, Color 3: 529 Champagner,  
Color 4: 423 Hellgrau, Color 5: 408 Taupe, Color 6: 425 Taubengrau



<b>Product</b>	Checker
<b>Designer</b>	Kelly Harris Smith
<b>Content</b>	100% Wool Design Felt + Akustika Substrate (60% post-consumer recycled content)
<b>Tile Size</b>	1'-0" x 1'-0" (30.5 x 30.5 cm)
<b>Thickness</b>	3/4 in (19 mm)
<b>Thickness Tolerance</b>	±1/16 in (2 mm)
<b>Edge</b>	Exposed (02 Medium Grey Substrate)
<b>Pattern Elements</b>	A, B, C, D, E
<b>Pattern Repeat Size</b>	1'-0" x 9'-0" (30.5 x 274.3 cm)
<b>Color Option</b>	6-Color per wall
<b>Design Tool</b>	A Design Tool is available to assist in the design of Checker. This tool allows patterns to be configured and is available at: <a href="http://dt.filzfelt.com">dt.filzfelt.com</a>
<b>Custom</b>	13-Color or more per wall is available and must be quoted
<b>Durability</b>	Contract or residential
<b>Lead Time</b>	Made to order and certain lead times will apply
<b>Installation</b>	Install in the pattern as specified and attach to a wall surface using a heavy-duty construction adhesive. Tiles may be trimmed to size with a utility knife. Refer to Mosaik Installation Instructions for complete guidance.
<b>Maintenance</b>	Vacuum occasionally to remove general air-borne debris. Should soiling occur, spot clean with mild soap and lukewarm water. Avoid aggressive rubbing as this can continue the felting process and change the surface appearance of the felt. Refer to Product Maintenance and Cleaning Guide for detailed care instructions.
<b>Variation</b>	Wool felt is a natural material and color variation and inclusions of natural fiber on the surface are evidence of the 100% natural origin of the material. Product color is only indicative, as it is not possible to assure consistency of color in a natural product due to the natural color of raw wool and absorption of dyes. Color matching cannot be guaranteed on shipments and variation will be more pronounced beyond the normal commercial range.
<b>Environmental</b>	100% Wool Design Felt is 100% biodegradable/compostable and Akustika 10 is 100% recyclable Contains no formaldehyde, 100% VOC free, no chemical irritants, and free of harmful substances 100% Wool Design Felt contributes to LEED® Download Declare Label Living Building Challenge Criteria Compliant Oeko-Tex® Standard 100 Certified Product Class II (100% Wool Design Felt + Akustika 10 Substrate) Prop 65 Compliant Meets VOC test limits for the CDPH v1.2 method
<b>Acoustics</b>	ASTM C 423: NRC – 0.75, SAA – 0.75
<b>Colorfastness to Light</b>	Class 4–5 (40 hours)
<b>Colorfastness to Crocking</b>	Class 3–4 (wet), Class 4–5 (dry)
<b>Flammability</b>	Test reports available upon request

# Standard Colors

							
487 Pfirsich	023 Koralle	945 Drachenfrucht	221 Himbeere	136 Weinrot	209 Bordeaux	102 Kirsche	201 Rot
							
125 Tomate	179 Hellrot	180 Terracotta	173 Mango	105 Rost	573 Kupfer	116 Orange	495 Abricot
							
124 Gelb	131 Honig	509 Kamel	550 Ocker	274 Senf	108 Zitrone	403 Mais	535 Sesam
							
203 Vanille	027 Kartause	384 Lind	713 Kiwi	377 Maigrün	732 Farn	378 Oliv	260 Sprießen
							
343 D'Grün	435 Smaragd	625 Pinie	248 Jade	472 Minze	575 Salbei	483 Adria	548 Türkis
							
312 Lagune	345 Pazifik	308 Petrol	698 Dunst	405 Stahl	215 Meer	540 Ozean	533 Indigo
							
282 D'Blau	111 Traube	626 Azur	647 Kobalt	686 Enzian	272 Royal	286 H'Blau	995 Wasser
							
458 Bewölkt	284 Himmel	613 Gletscher	551 Eis	113 Immergrün	099 Lila	667 Amethyst	269 Violett
							
242 Pink	640 Granat	634 Erröten	671 Pfingstrose	255 Flieder	437 Aubergine	250 Trüffelbraun	220 Rehbraun
							
411 Alpaka	190 Natur-meliert	200 Natur	331 Sahara	311 Mandel	467 Sand	481 Sandstein	100 Wolweiß
							
110 Rohweiß	160 Beige	529 Champagner	150 Weiß	428 Silber	427 Stein	021 Beton	170 Asche
							
423 Hellgrau	408 Taupe	175 Graphit	425 Taubengrau	446 Kohle	300 Anthrazit	426 Schwarz	