

Weave

Acoustic Wall Tile

filzfelt •

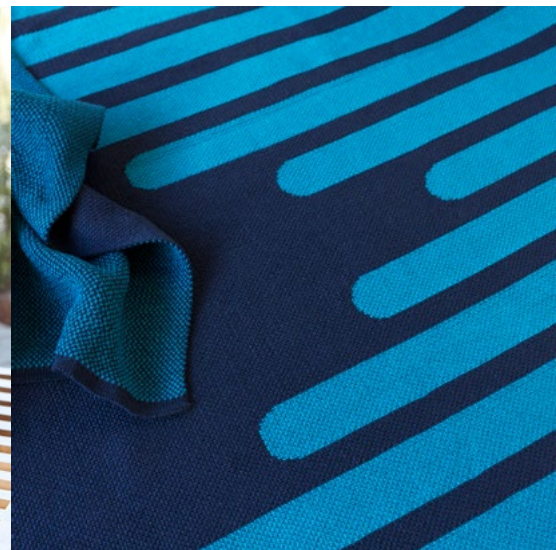
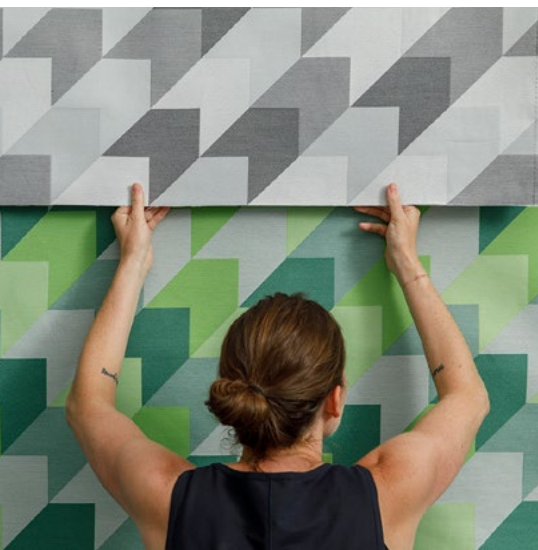
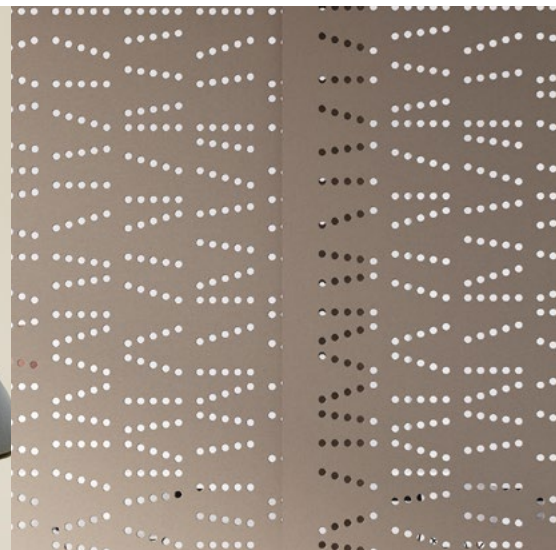


Weave lets color and
sound-softening
intertwine.

As its name implies, Weave features a bold pattern of intersecting and overlapping colors. A versatile wall application that is strong and durable, Weave brings colorful sound dampening to any space. Available in over ninety colors, Weave is an acoustic powerhouse that installs with ease.

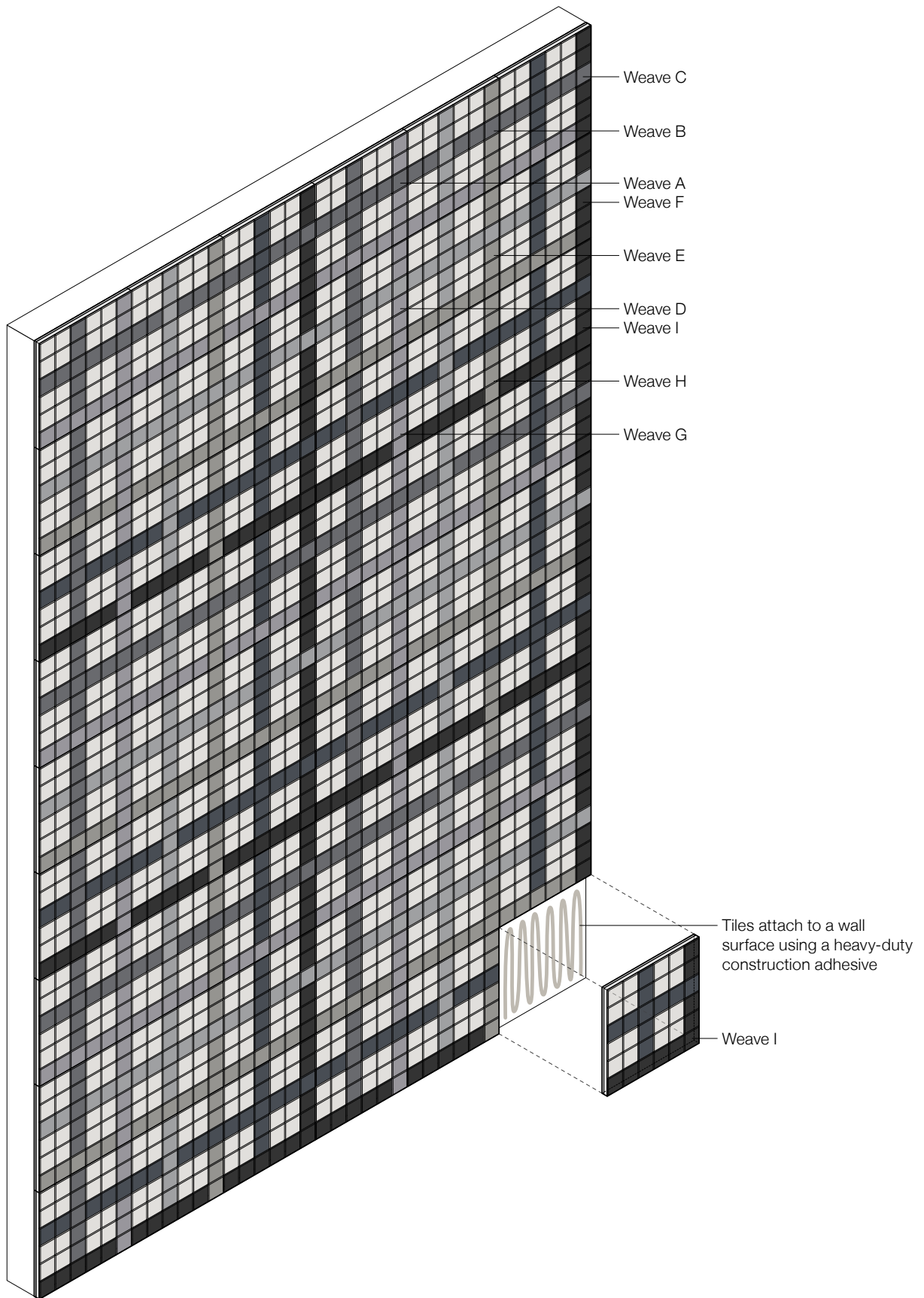
Weave was designed by Kelly Harris Smith, a textile and product designer who specializes in natural, sustainable, and recycled materials.





"I find inspiration almost everywhere I go. Whether it's the color of the sky at a particular moment, the texture of a manhole cover or the patterning on a facade, I'm constantly recording. Depending on the type of project, I photograph, sketch, collage and even stitch my ideas before moving to conceptual drawings."

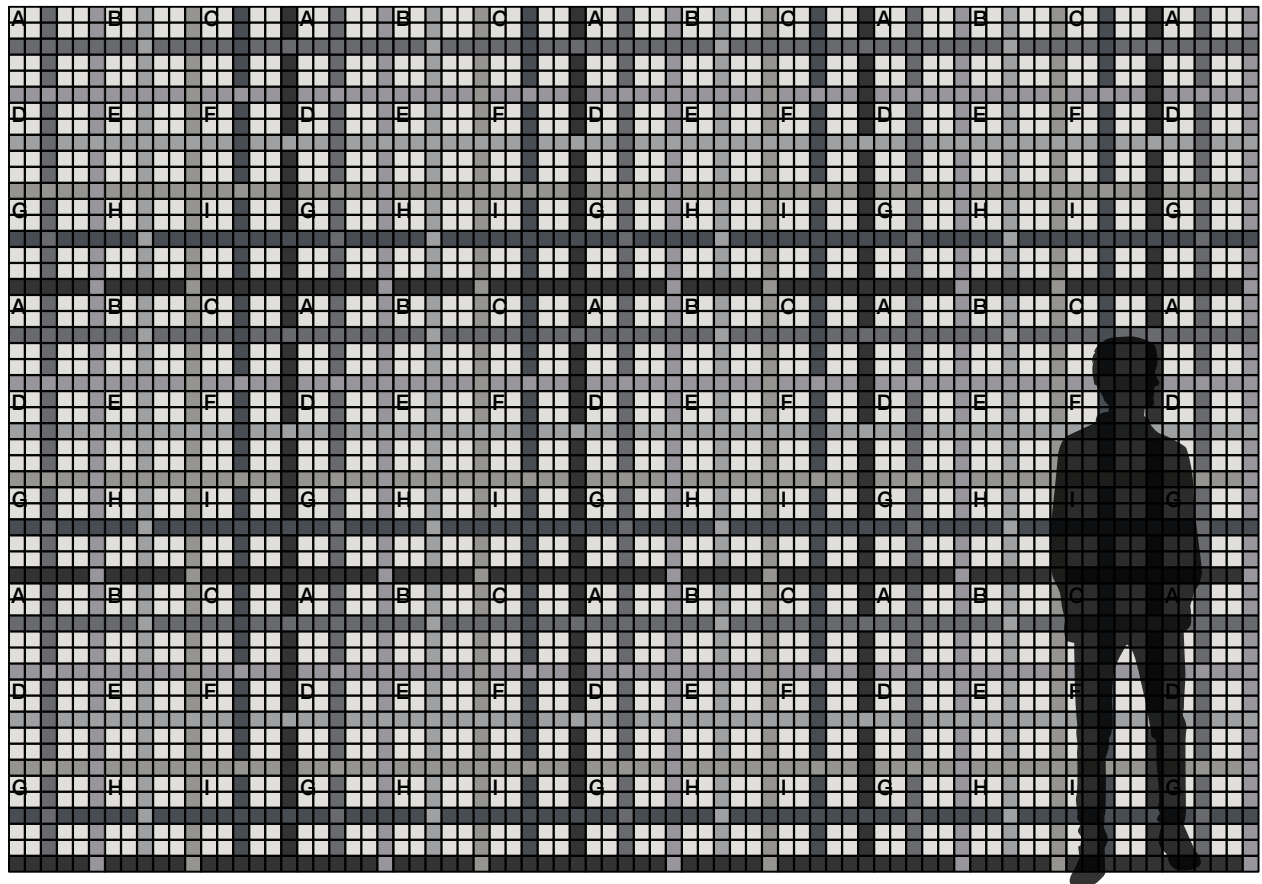
– Kelly Harris Smith, designer of Weave



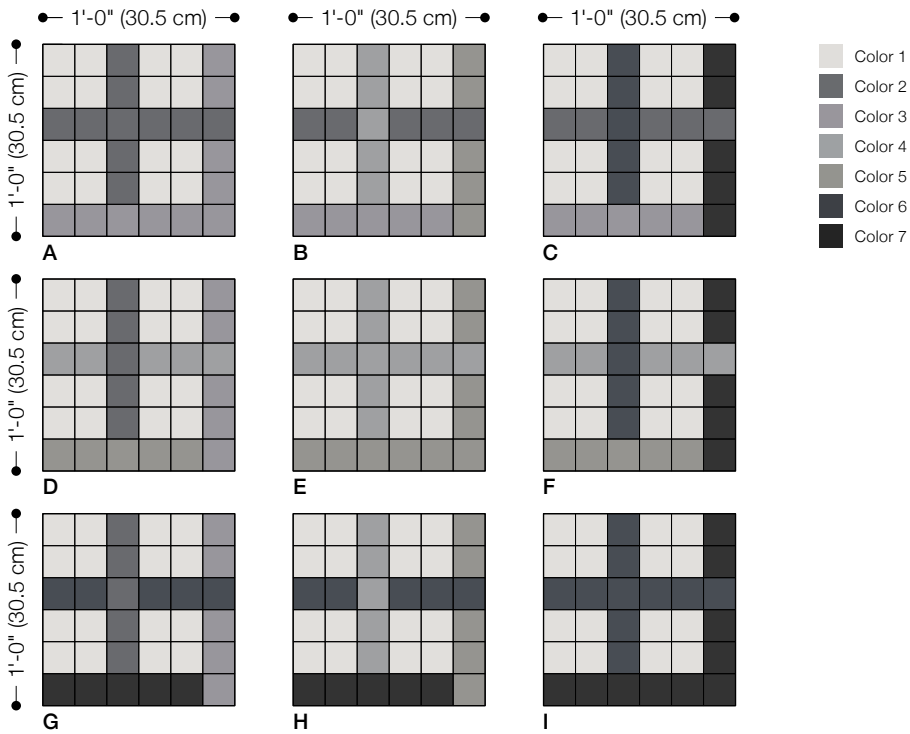
Exploded Axonometric

13'-0" (396.2 cm)

9'-0" (274.3 cm)



Standard Pattern



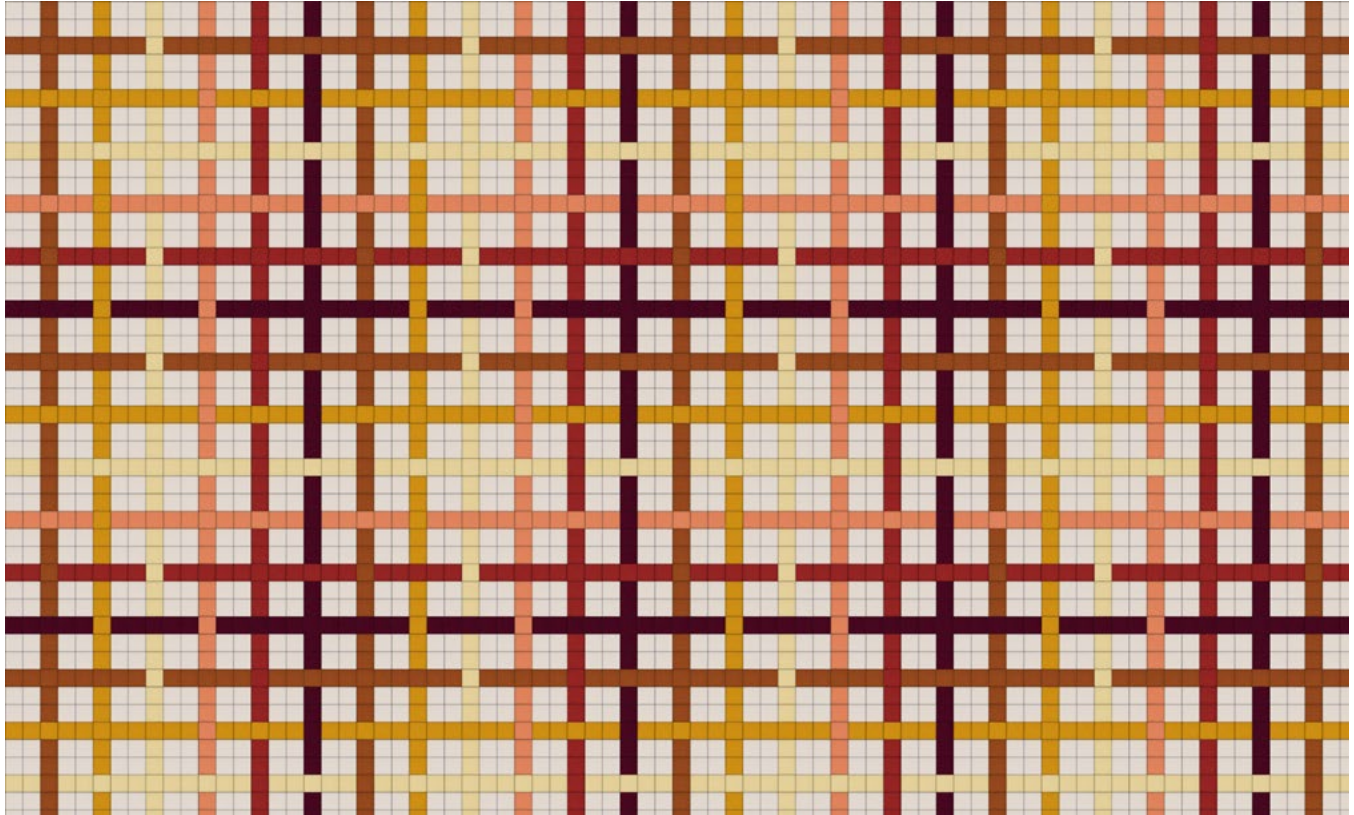
Standard Tiles

Nine Modules in Standard Pattern

Suggested Colorways

Weave is customizable in over ninety colors of 100% Wool Design Felt. The following pages include suggested colorways to serve as a source for inspiration. Use the key below to identify the position of a color in each colorway. We recommend referencing physical samples when making final color selections.

Have your own ideas? Head to the **Design Tool** to build your own unique wall and select from over ninety colors.



Weave Suggested Colorway 001
(See rendering on page 2)

●1'-0" (30.5 cm) ● 1'-0" (30.5 cm) ● 1'-0" (30.5 cm)

●1'-0" (30.5 cm) ● 1'-0" (30.5 cm) ● 1'-0" (30.5 cm)

●1'-0" (30.5 cm) ● 1'-0" (30.5 cm) ● 1'-0" (30.5 cm)

A

B

C

D

E

F

G

H

I

Color 1: 100 Wollweiß

Color 2: 573 Kupfer

Color 3: 509 Kamel

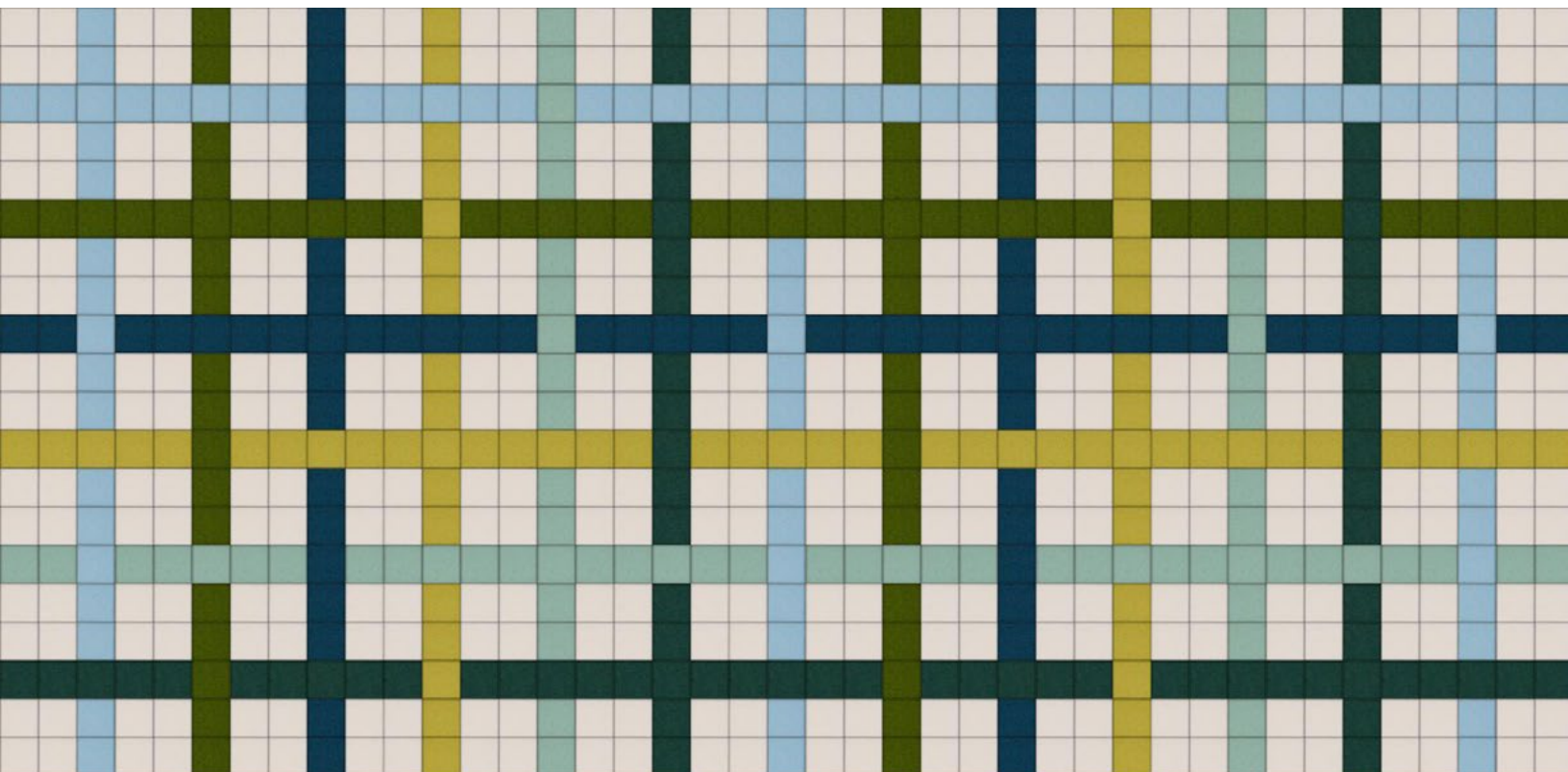
Color 4: 535 Sesam

Color 5: 487 Pfirsich

Color 6: 180 Terracotta

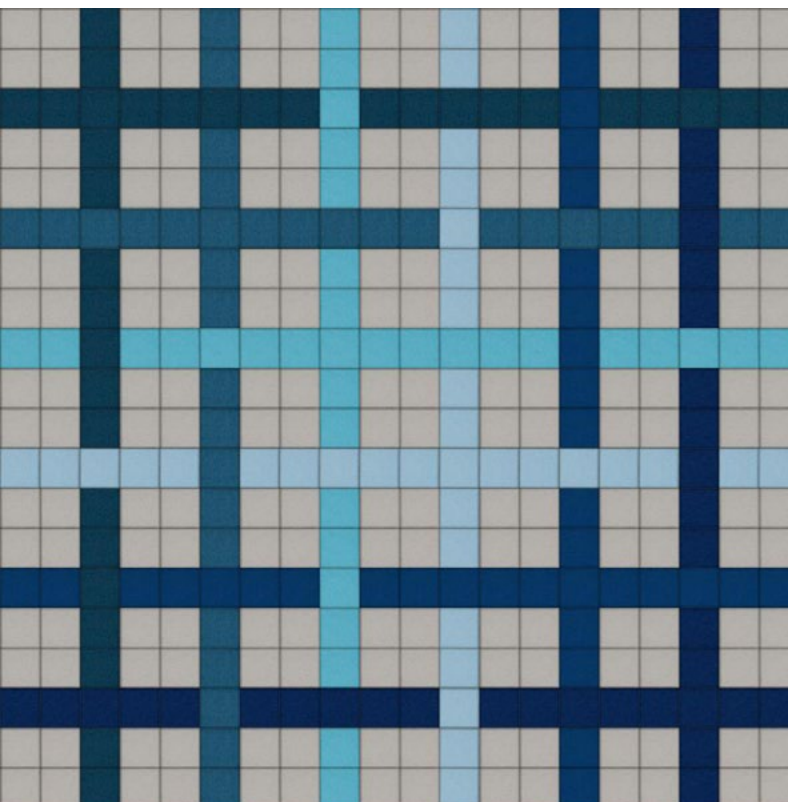
Color 7: 209 Bordeaux

Standard Tiles
Nine Modules in Standard Pattern



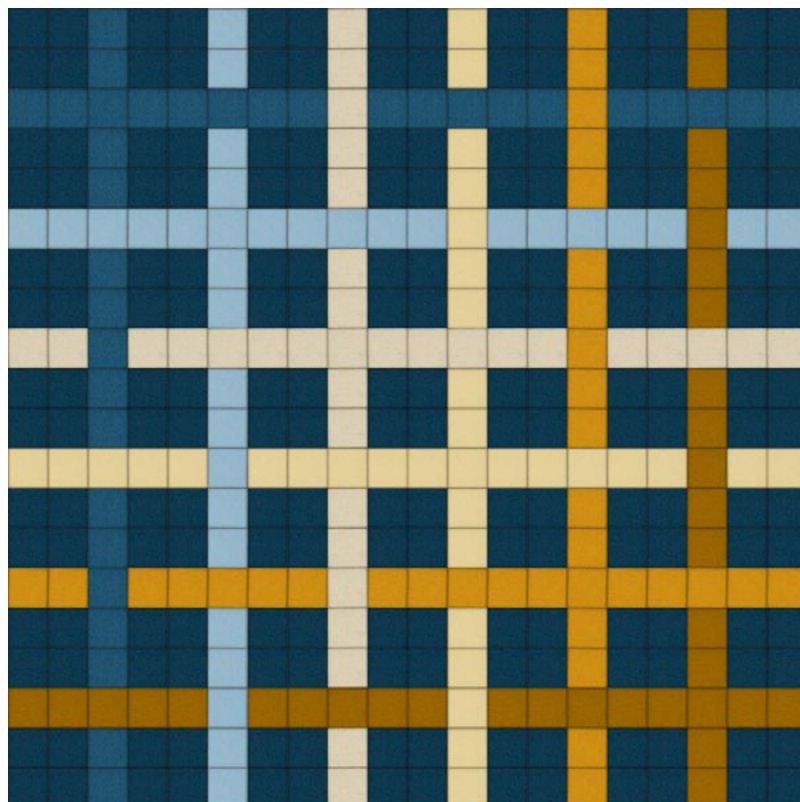
Weave Suggested Colorway 002

Color 1: 100 Wollweiß, Color 2: 551 Eis, Color 3: 732 Farn, Color 4: 215 Meer, Color 5: 027 Kartause,
Color 6: 575 Salbei, Color 7: 435 Smaragd



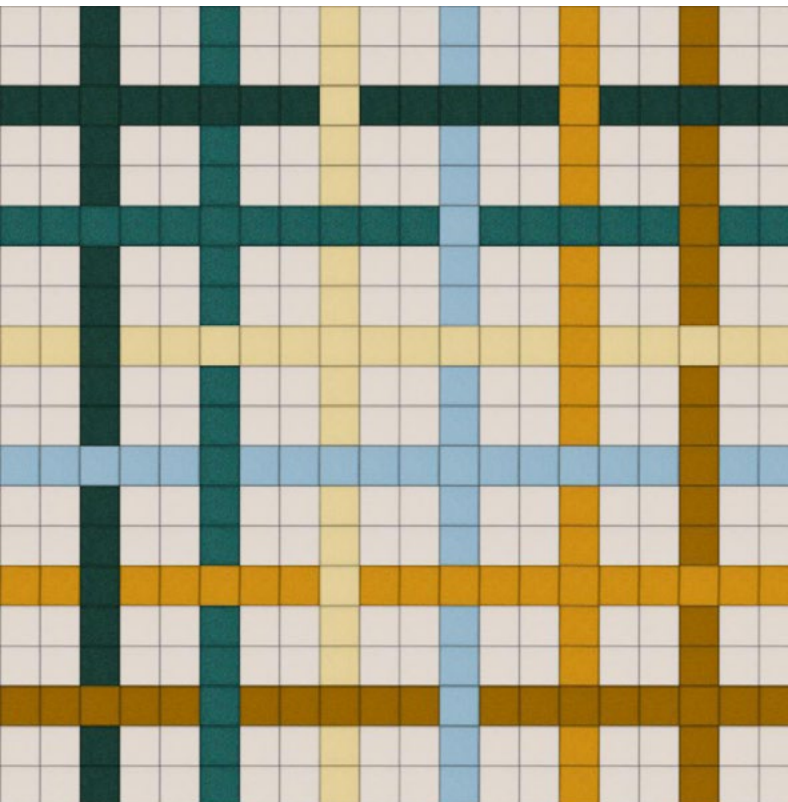
Weave Suggested Colorway 003

Color 1: 428 Silber, Color 2: 215 Meer, Color 3: 698 Dunst, Color 4: 458 Bewölkt,
Color 5: 551 Eis, Color 6: 647 Kobalt, Color 7: 111 Traube



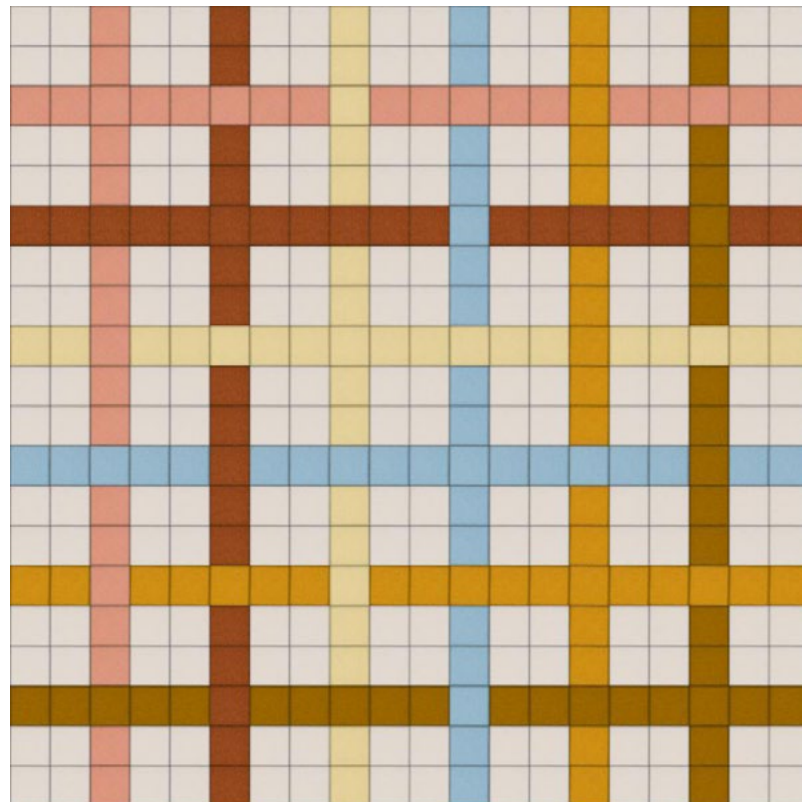
Weave Suggested Colorway 004

Color 1: 215 Meer, Color 2: 698 Dunst, Color 3: 551 Eis, Color 4: 110 Rohweiß,
Color 5: 535 Sesan, Color 6: 509 Kamel, Color 7: 550 Ocker



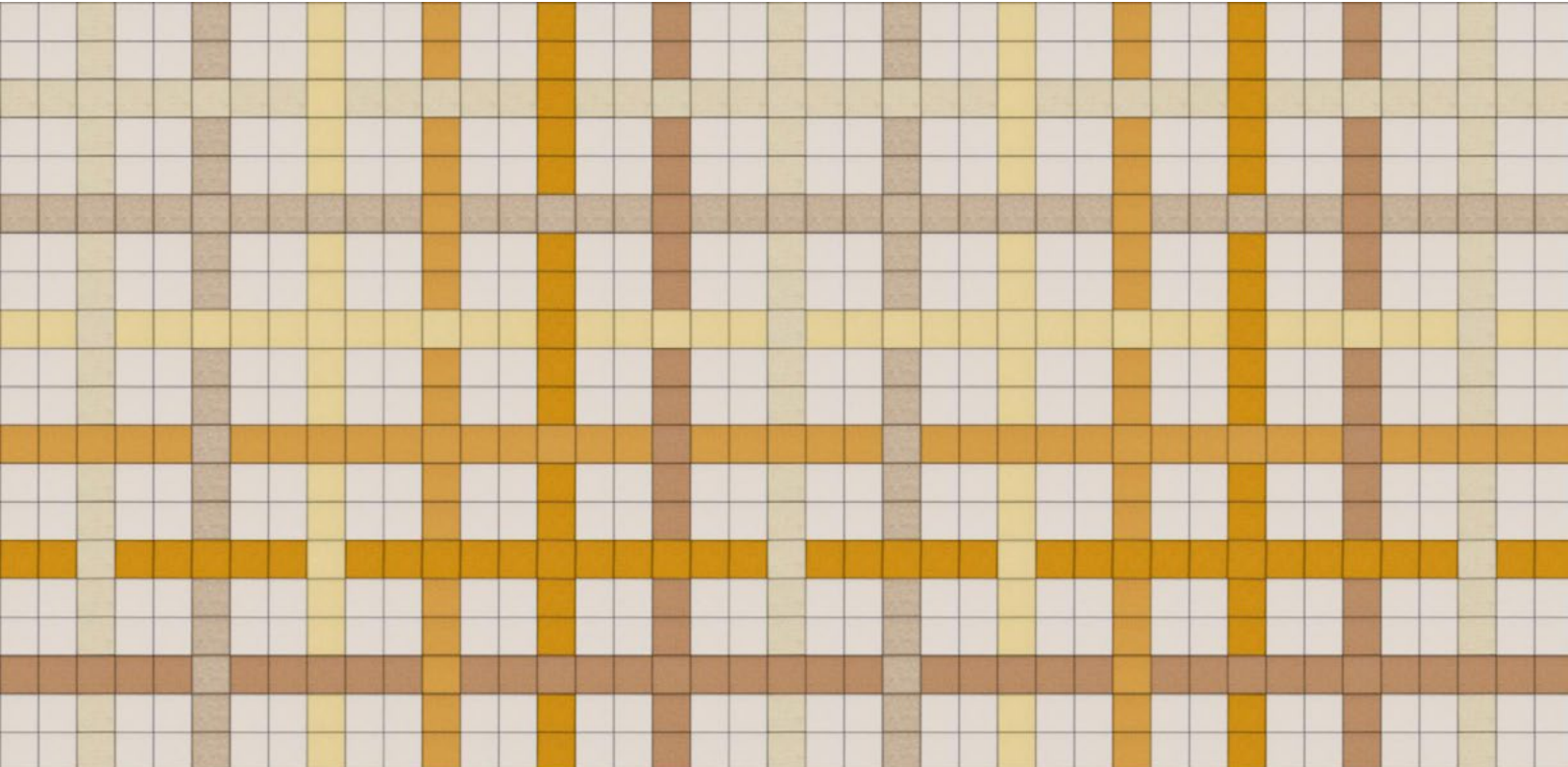
Weave Suggested Colorway 005

Color 1: 100 Wollweiß, Color 2: 435 Smaragd, Color 3: 625 Pinie, Color 4: 535 Sesam,
Color 5: 551 Eis, Color 6: 509 Kamel, Color 7: 550 Ocker



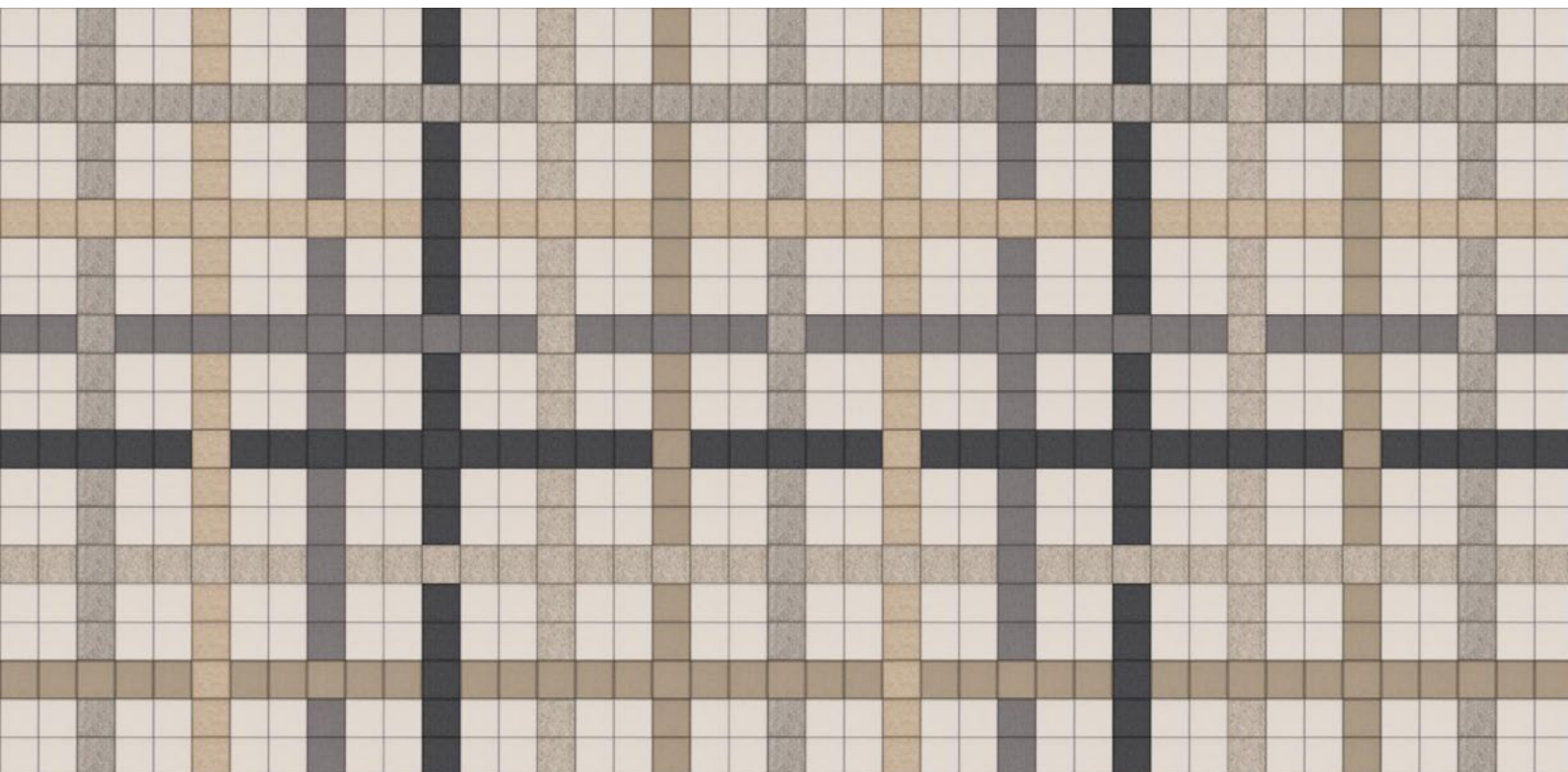
Weave Suggested Colorway 006

Color 1: 100 Wollweiß, Color 2: 023 Koralle, Color 3: 573 Kupfer, Color 4: 535 Sesam,
Color 5: 551 Eis, Color 6: 509 Kamel, Color 7: 550 Ocker



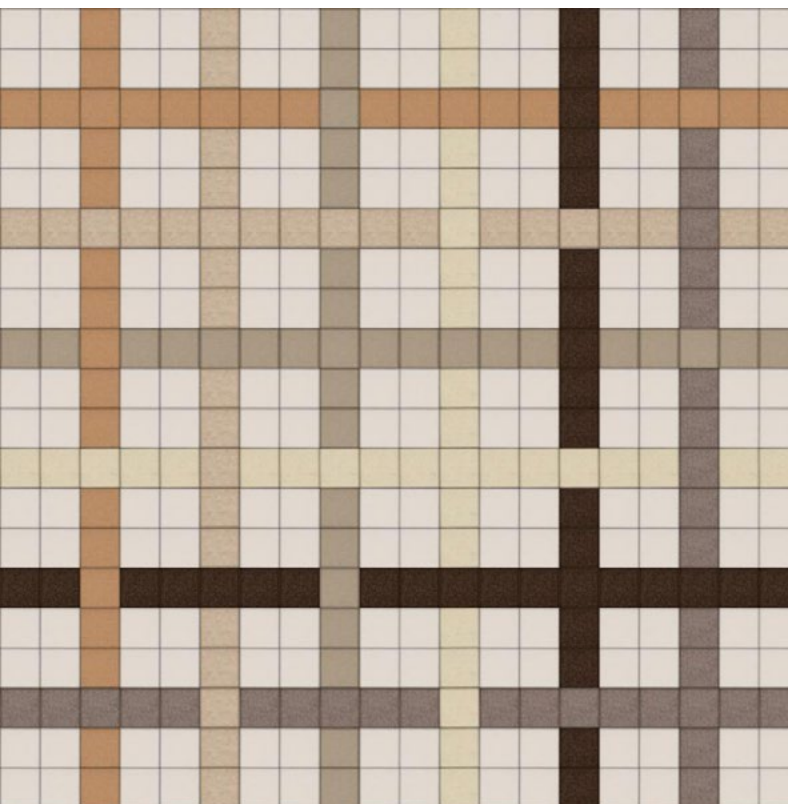
Weave Suggested Colorway 007

Color 1: 100 Wollweiß, Color 2: 110 Rohweiß, Color 3: 481 Sandstein, Color 4: 535 Sesam,
Color 5: 131 Honig, Color 6: 509 Kamel, Color 7: 311 Mandel



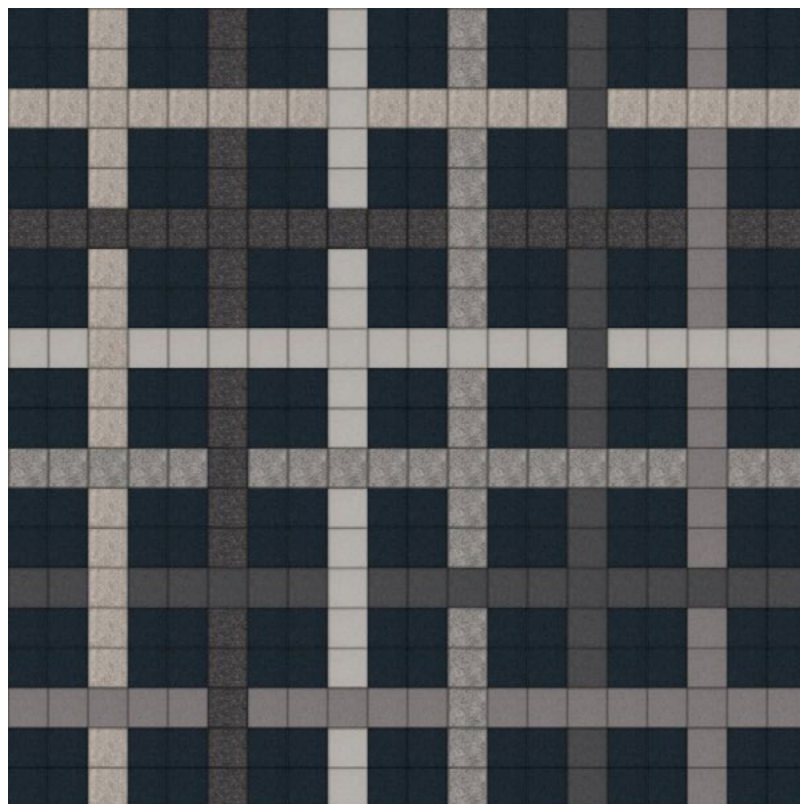
Weave Suggested Colorway 008

Color 1: 100 Wollweiß, Color 2: 427 Stein, Color 3: 481 Sandstein, Color 4: 423 Hellgrau, Color 5: 425 Taubengrau, Color 6: 150 Weiß, Color 7: 529 Champagner
 (See photography on page 3.)



Weave Suggested Colorway 009

Color 1: 100 Wollweiß, Color 2: 311 Mandel, Color 3: 481 Sandstein, Color 4: 529 Champagner, Color 5: 110 Rohweiß, Color 6: 220 Rehbraun, Color 7: 408 Taupe



Weave Suggested Colorway 010

Color 1: 446 Kohle, Color 2: 427 Stein, Color 3: 175 Graphit, Color 4: 428 Silber, Color 5: 170 Asche, Color 6: 425 Taubengrau, Color 7: 423 Hellgrau

Product	Weave
Designer	Kelly Harris Smith
Content	100% Wool Design Felt + Akustika Substrate (60% post-consumer recycled content)
Tile Size	1'-0" x 1'-0" (30.5 x 30.5 cm)
Thickness	3/4 in (19 mm)
Thickness Tolerance	±1/16 in (2 mm)
Edge	Exposed (02 Medium Grey Substrate)
Pattern Elements	A, B, C, D, E, F, G, H, I
Pattern Repeat Size	3'-0" x 3'-0" (91.4 x 91.4 cm)
Color Option	7-Color per wall
Design Tool	A Design Tool is available to assist in the design of Weave. This tool allows patterns to be configured and is available at: dt.filzfelt.com
Custom	13-Color or more per wall is available and must be quoted
Durability	Contract or residential
Lead Time	Made to order and certain lead times will apply
Installation	Installs in the pattern as specified and attaches to a wall surface using a heavy-duty construction adhesive. Tiles may be trimmed to size with a utility knife. Refer to Mosaik Installation Instructions for complete guidance.
Maintenance	Vacuum occasionally to remove general air-borne debris. Should soiling occur, spot clean with mild soap and lukewarm water. Avoid aggressive rubbing as this can continue the felting process and change the surface appearance of the felt. Refer to Product Maintenance and Cleaning Guide for detailed care instructions.
Variation	Wool felt is a natural material and color variation and inclusions of natural fiber on the surface are evidence of the 100% natural origin of the material. Product color is only indicative, as it is not possible to assure consistency of color in a natural product due to the natural color of raw wool and absorption of dyes. Color matching cannot be guaranteed on shipments and variation will be more pronounced beyond the normal commercial range.
Environmental	100% Wool Design Felt is 100% biodegradable/compostable and Akustika 10 is 100% recyclable Contains no formaldehyde, 100% VOC free, no chemical irritants, and free of harmful substances 100% Wool Design Felt contributes to LEED® Download Declare Label Living Building Challenge Criteria Compliant Oeko-Tex® Standard 100 Certified Product Class II (100% Wool Design Felt + Akustika 10 Substrate) Prop 65 Compliant Meets VOC test limits for the CDPH v1.2 method
Acoustics	ASTM C 423: NRC – 0.75, SAA – 0.75
Colorfastness to Light	Class 4–5 (40 hours)
Colorfastness to Crocking	Class 3–4 (wet), Class 4–5 (dry)
Flammability	Test reports available upon request

Standard Colors

							
487 Pfirsich	023 Koralle	945 Drachenfrucht	221 Himbeere	136 Weinrot	209 Bordeaux	102 Kirsche	201 Rot
							
125 Tomate	179 Hellrot	180 Terracotta	173 Mango	105 Rost	573 Kupfer	116 Orange	495 Abricot
							
124 Gelb	131 Honig	509 Kamel	550 Ocker	274 Senf	108 Zitrone	403 Mais	535 Sesam
							
203 Vanille	027 Kartause	384 Lind	713 Kiwi	377 Maigrün	732 Farn	378 Oliv	260 Sprießen
							
343 D'Grün	435 Smaragd	625 Pinie	248 Jade	472 Minze	575 Salbei	483 Adria	548 Türkis
							
312 Lagune	345 Pazifik	308 Petrol	698 Dunst	405 Stahl	215 Meer	540 Ozean	533 Indigo
							
282 D'Blau	111 Traube	626 Azur	647 Kobalt	686 Enzian	272 Royal	286 H'Blau	995 Wasser
							
458 Bewölkt	284 Himmel	613 Gletscher	551 Eis	113 Immergrün	099 Lila	667 Amethyst	269 Violett
							
242 Pink	640 Granat	634 Erröten	671 Pfingstrose	255 Flieder	437 Aubergine	250 Trüffelbraun	220 Rehbraun
							
411 Alpaka	190 Natur-meliert	200 Natur	331 Sahara	311 Mandel	467 Sand	481 Sandstein	100 Wolweiß
							
110 Rohweiß	160 Beige	529 Champagner	150 Weiß	428 Silber	427 Stein	021 Beton	170 Asche
							
423 Hellgrau	408 Taupe	175 Graphit	425 Taubengrau	446 Kohle	300 Anthrazit	426 Schwarz	