



Bottle Block

Acoustic Wall Tile

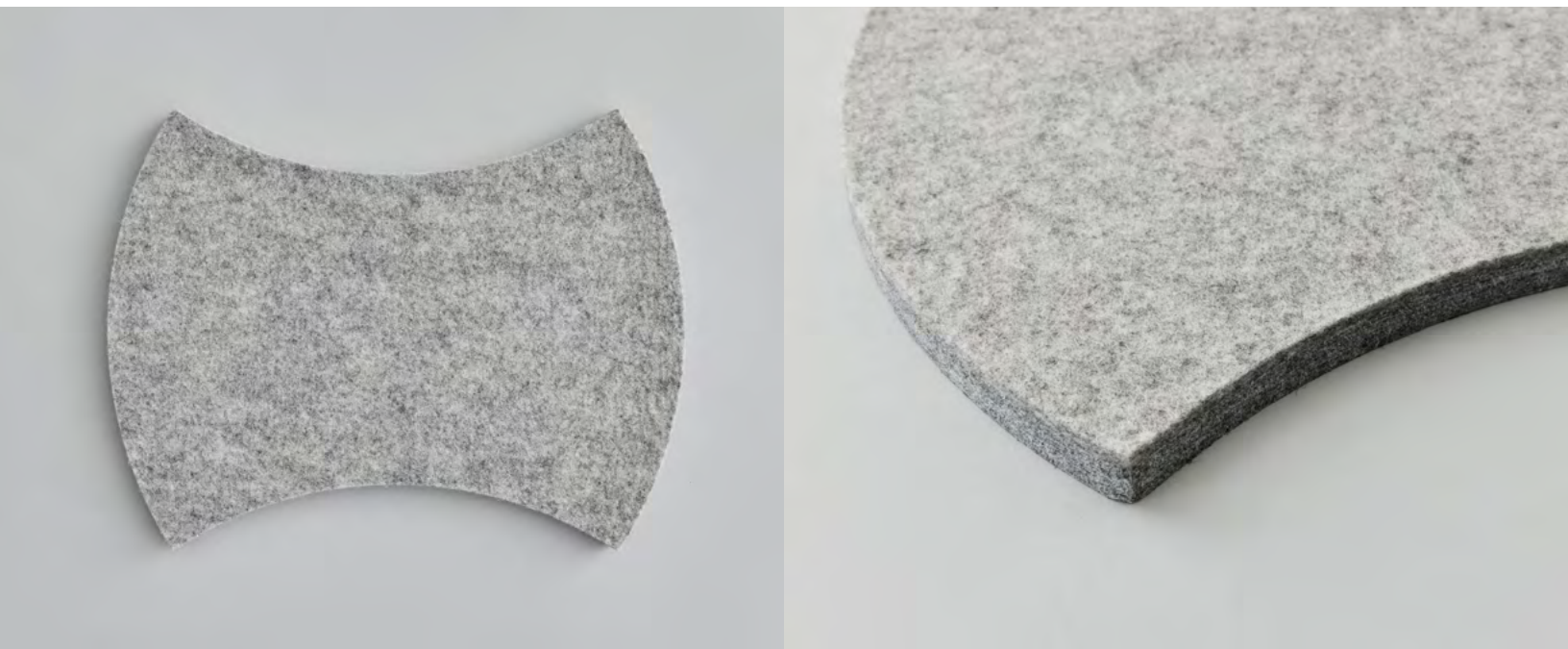
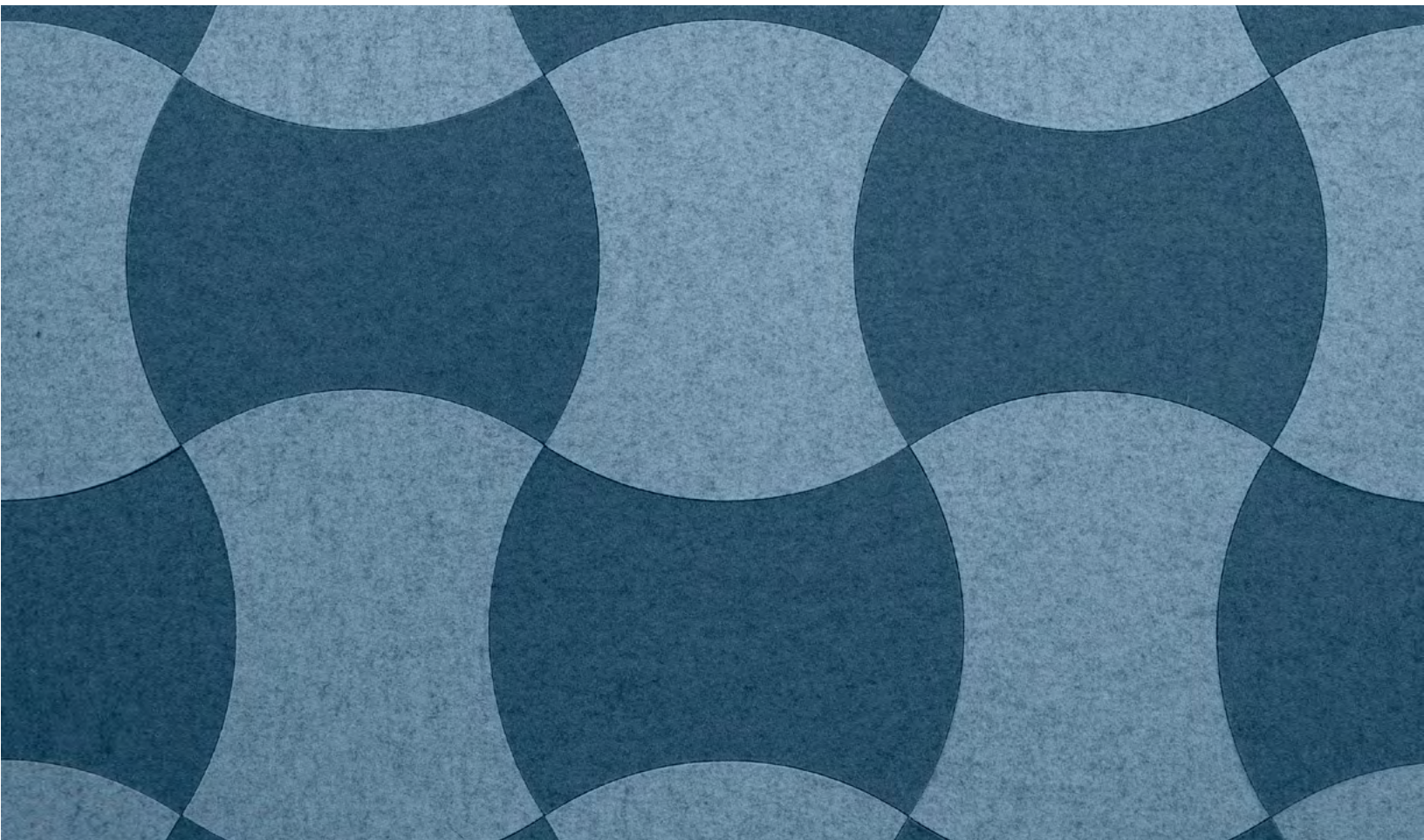
filzfelt •



A wallcovering
that keeps sound
bottled up.

Eva Zeisel's prototype Coca-Cola bottles inspire the shape of Bottle Block. The curves nest together when rotated to create a graphic pattern of gentle, repeating arcs. Available in over ninety of 100% Wool Design Felt mounted to a high-performing acoustic substrate, the modular tiles install easily with heavy-duty construction adhesive while providing sound absorption and natural texture

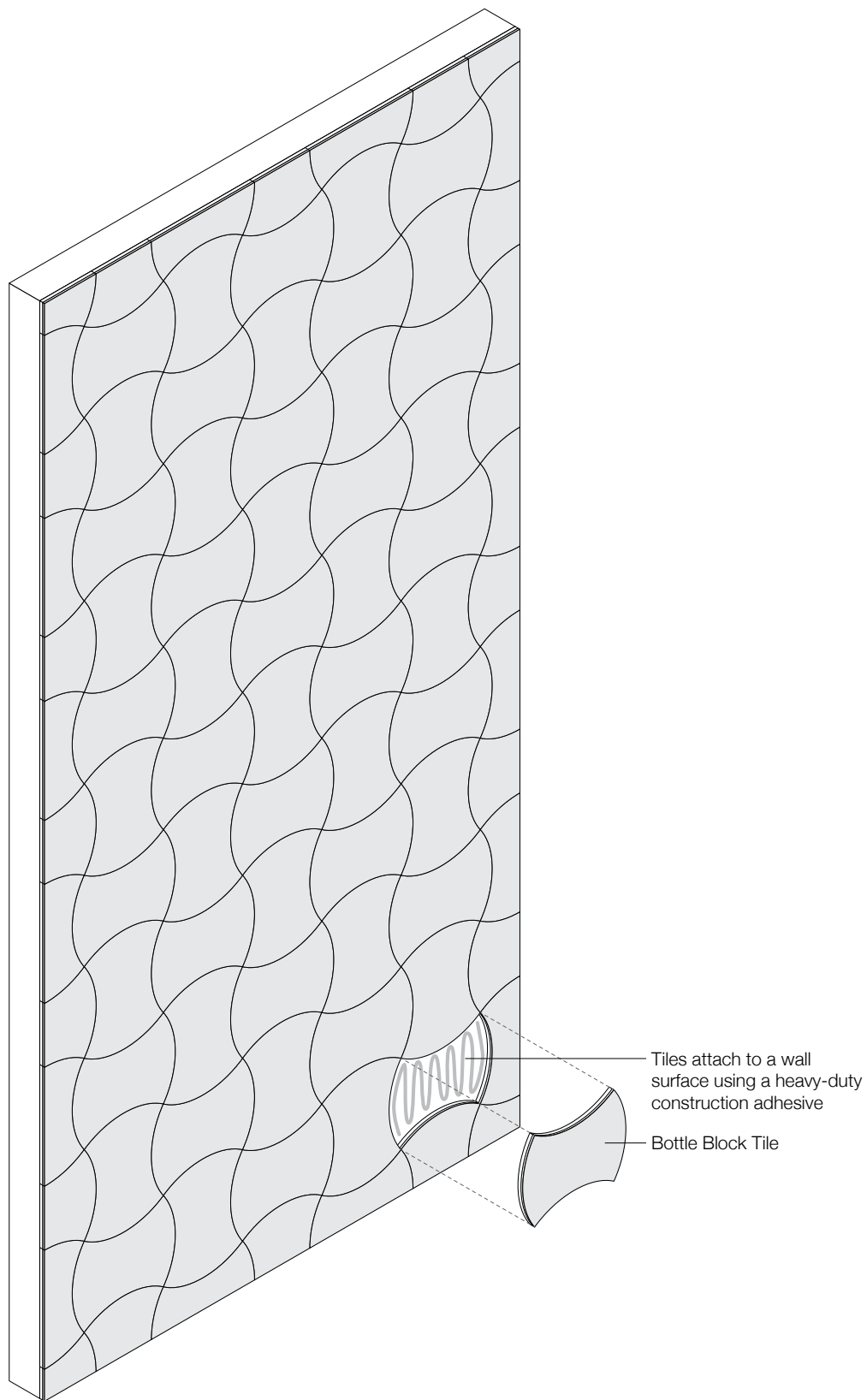
Bottle Block was designed by Eva Zeisel, a modernist ceramicist, designer, and "a maker of useful things."



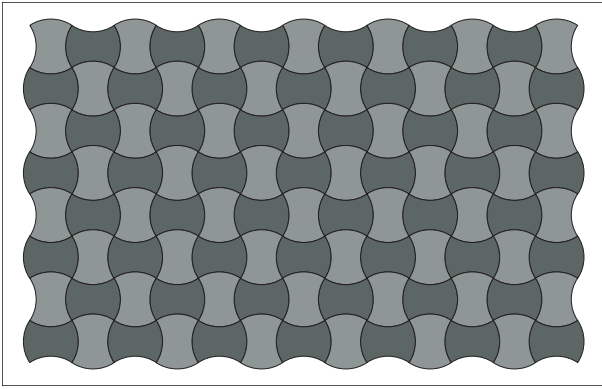


"To describe our profession as designers, we are actually concerned with the playful search for beauty. The word 'playful' is a necessary aspect of our work because one of our problems is that we have to make and produce lovely things all throughout life. Playful is therefore an important part of our quality as designers."

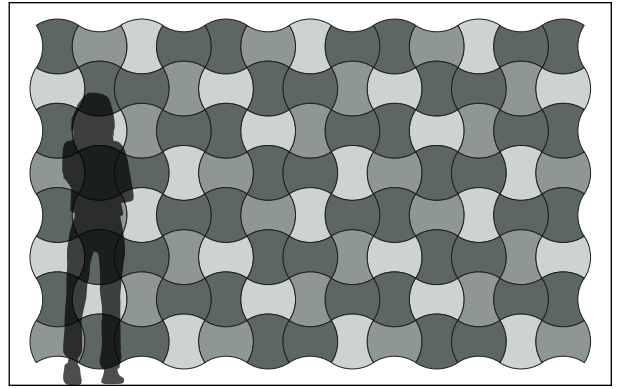
– Eva Zeisel, designer of Bottle Block



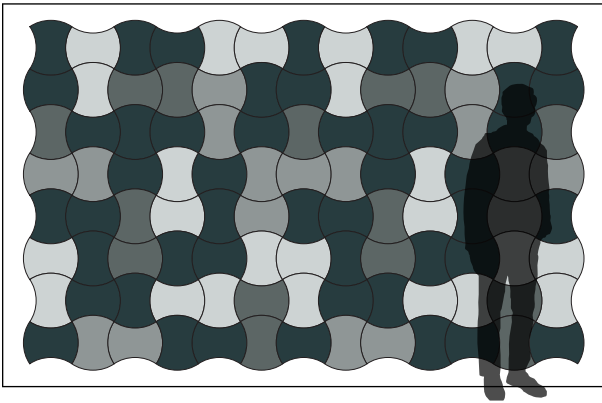
Exploded Axonometric



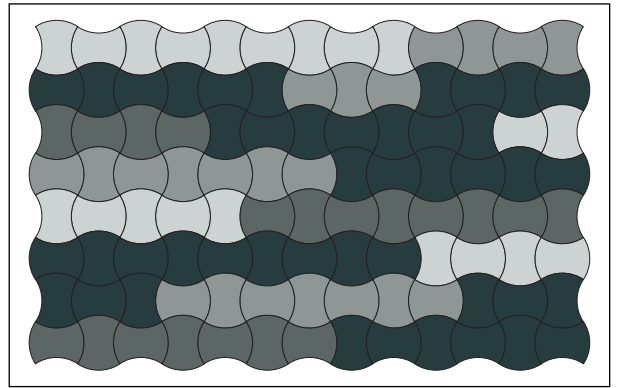
2-Color Pattern
Code: FF-EZ-BOTT-001



3-Color Pattern
Code: FF-EZ-BOTT-002



4-Color Pattern 1
Code: FF-EZ-BOTT-003



4-Color Pattern 2
Code: FF-EZ-BOTT-004

Patterns are shown as suggested installations and may be configured with any combination of FilzFelt colors

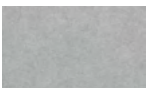


| | |
|----------------------------------|--|
| Product | Bottle Block |
| Designer | Eva Zeisel |
| Content | 100% Wool Design Felt + Akustika 10 Substrate (60% post-consumer recycled content) |
| Tile Size | 1'-0" x 9 1/4" (30.5 x 23.4 cm) |
| Thickness | 1/2 in (13 mm) |
| Thickness Tolerance | ±1/16 in (2 mm) |
| Edges | Standard |
| Color Options | 1-Color, 2-Color, 3-Color, or 4-Color per wall |
| Design Tool | A Design Tool is available to assist in the design of Block tiles. This tool allows patterns to be configured and is available at: dt.filzfelt.com |
| Custom | Custom sizes, shapes, and mounting options are available and must be quoted Tiles in 5/8 in (15 mm) thickness available with a 10% upcharge 5-Color or more per wall is available and must be quoted |
| Durability | Contract or residential |
| Lead Time | Made to order and certain lead times will apply |
| Installation | Install in the pattern as specified and attach to a wall surface using a heavy-duty construction adhesive. Tiles may be trimmed to size with a utility knife. Refer to Bottle Block Installation Instructions for complete guidance. |
| Maintenance | Vacuum occasionally to remove general air-borne debris. Should soiling occur, spot clean with mild soap and lukewarm water. Avoid aggressive rubbing as this can continue the felting process and change the surface appearance of the felt. Refer to 100% Wool Design Felt Maintenance + Cleaning for detailed care instructions. |
| Variation | Wool felt is a natural material and color variation and inclusions of natural fiber on the surface are evidence of the 100% natural origin of the material. Product color is only indicative, as it is not possible to assure consistency of color in a natural product due to the natural color of raw wool and absorption of dyes. Color matching cannot be guaranteed on shipments and variation will be more pronounced beyond the normal commercial range. |
| Environmental | 100% Wool Design Felt is 100% biodegradable/compostable and Akustika 10 contains minimum 60% post-consumer recycled content and is 100% recyclable Contains no formaldehyde, 100% VOC free, no chemical irritants, and free of harmful substances 100% Wool Design Felt and Akustika 10 contribute to LEED® Download Declare Label Living Building Challenge Criteria Compliant Oeko-Tex® Standard 100 Certified Product Class II (100% Wool Design Felt + Akustika 10 Substrate) Meets VOC test limits for the CDPH v1.2 method |
| Acoustics | ASTM C 423: NRC – 0.50, SAA – 0.51 |
| Colorfastness to Light | Class 4–5 (40 hours) |
| Colorfastness to Crocking | Class 3–4 (wet), Class 4–5 (dry) |
| Flammability | Test reports available upon request |

Standard Colors

100% Wool Design Felt

| | | | | | | | |
|---|---|---|---|---|--|---|---|
|  |  |  |  |  |  |  |  |
| 487 Pfirsich | 023 Koralle | 945 Drachenfrucht | 221 Himbeere | 136 Weinrot | 209 Bordeaux | 102 Kirsche | 201 Rot |
|  |  |  |  |  |  |  |  |
| 125 Tomate | 179 Hellrot | 180 Terracotta | 173 Mango | 105 Rost | 573 Kupfer | 116 Orange | 495 Abricot |
|  |  |  |  |  |  |  |  |
| 124 Gelb | 131 Honig | 509 Kamel | 550 Ocker | 274 Senf | 108 Zitrone | 403 Mais | 535 Sesam |
|  |  |  |  |  |  |  |  |
| 203 Vanille | 027 Kartause | 384 Lind | 713 Kiwi | 377 Maigrün | 732 Farn | 378 Oliv | 260 Sprießen |
|  |  |  |  |  |  |  |  |
| 343 D'Grün | 435 Smaragd | 625 Pinie | 248 Jade | 472 Minze | 575 Salbei | 483 Adria | 548 Türkis |
|  |  |  |  |  |  |  |  |
| 312 Lagune | 345 Pazifik | 308 Petrol | 698 Dunst | 405 Stahl | 215 Meer | 540 Ozean | 533 Indigo |
|  |  |  |  |  |  |  |  |
| 282 D'Blau | 111 Traube | 626 Azur | 647 Kobalt | 686 Enzian | 272 Royal | 286 H'Blau | 995 Wasser |
|  |  |  |  |  |  |  |  |
| 458 Bewölkt | 284 Himmel | 613 Gletscher | 551 Eis | 113 Immergrün | 099 Lila | 667 Amethyst | 269 Violett |
|  |  |  |  |  |  |  |  |
| 242 Pink | 640 Granat | 634 Erröten | 671 Pfingstrose | 255 Flieder | 437 Aubergine | 250 Trüffelbraun | 220 Rehbraun |
|  |  |  |  |  |  |  |  |
| 411 Alpaka | 190 Natur-meliert | 200 Natur | 331 Sahara | 311 Mandel | 467 Sand | 481 Sandstein | 100 Wollweiß |
|  |  |  |  |  |  |  |  |
| 110 Rohweiß | 160 Beige | 529 Champagner | 150 Weiß | 428 Silber | 427 Stein | 021 Beton | 170 Asche |
|  |  |  |  |  |  |  | |
| 423 Hellgrau | 408 Taupe | 175 Graphit | 425 Taubengrau | 446 Kohle | 300 Anthrazit | 426 Schwarz | |

Akustika 10 Substrate

| | | |
|---|---|---|
|  |  |  |
| 05 Ice | 02 Medium Grey | 03 Dark Grey |