



Gingham

Acoustic Wall Tile

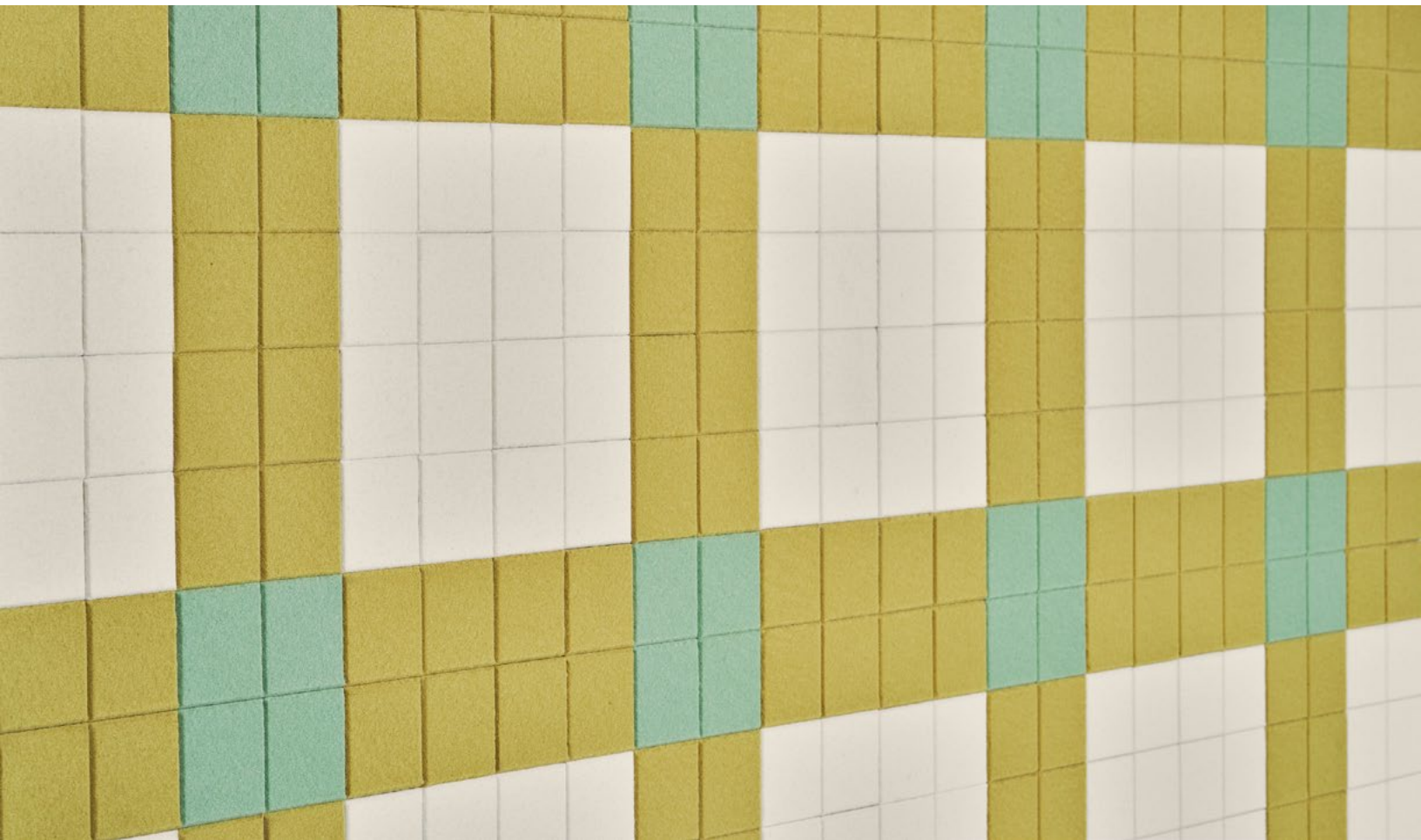
filzfelt •

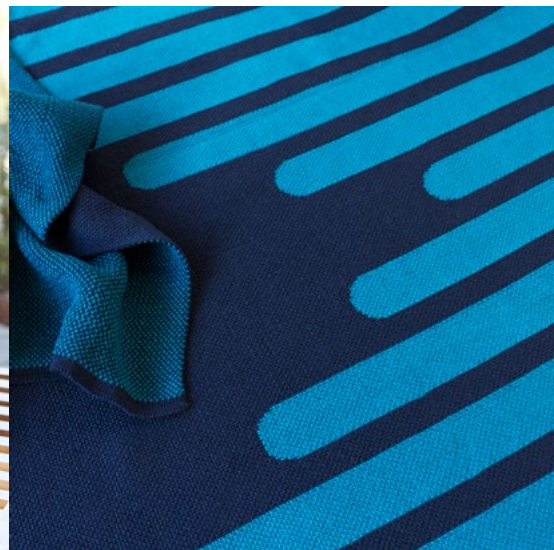
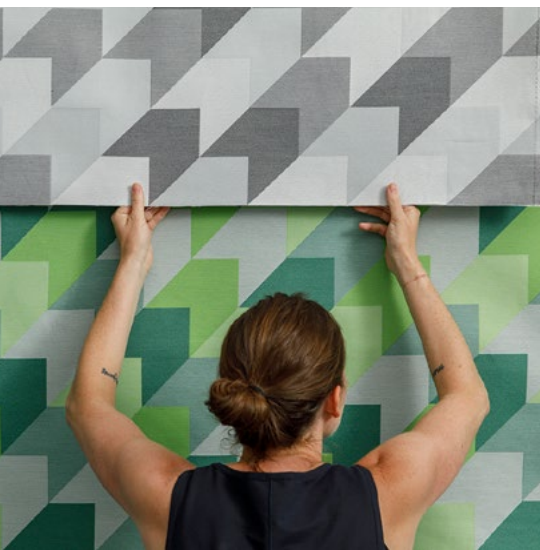
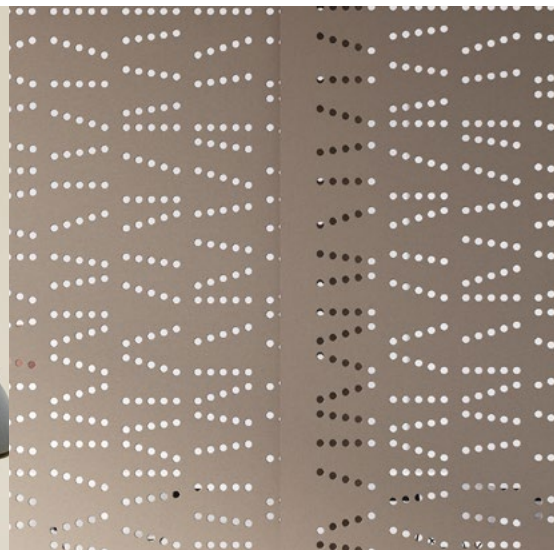


Gingham is
where acoustics
and aesthetics
cross paths.

The timeless textile pattern, Gingham, finds a new home as a completely customizable acoustic wallcovering. Available in combinations of up to three colors of pure wool felt, Gingham combines sound softening and easy installation in a wall system that is far more than meets the eye.

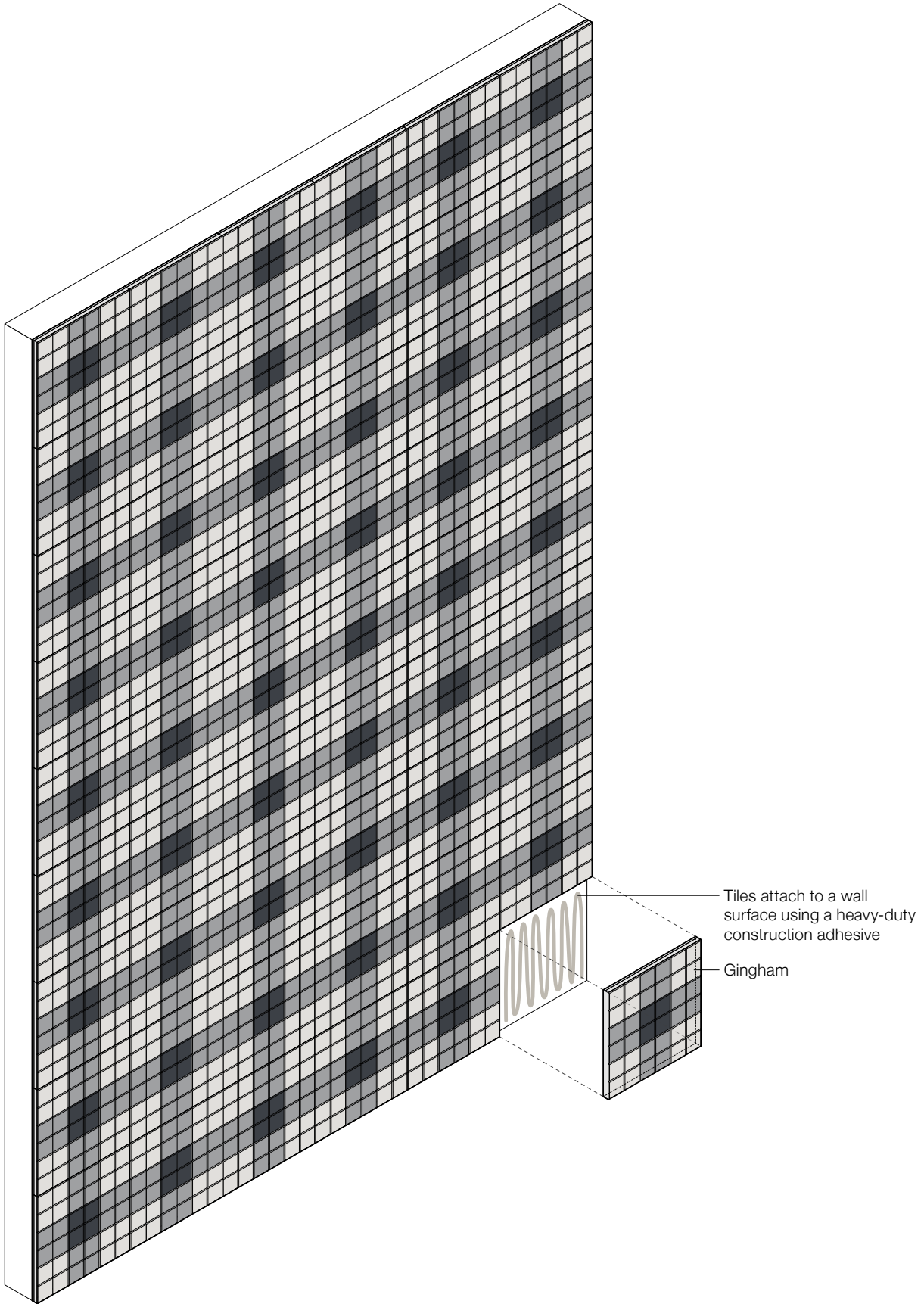
Gingham was designed by Kelly Harris Smith, a textile and product designer who specializes in natural, sustainable, and recycled materials.



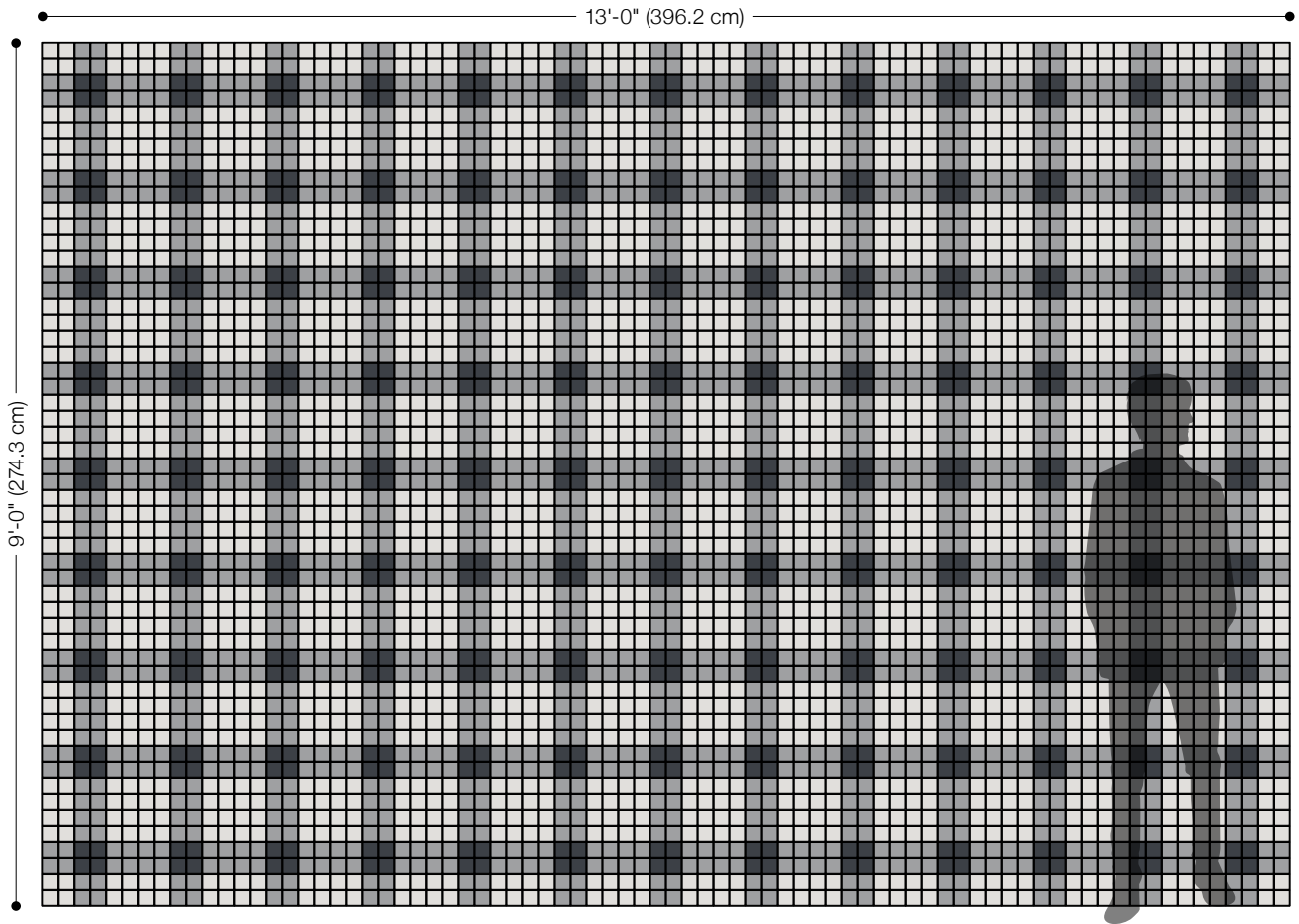


"I find inspiration almost everywhere I go. Whether it's the color of the sky at a particular moment, the texture of a manhole cover or the patterning on a facade, I'm constantly recording. Depending on the type of project, I photograph, sketch, collage and even stitch my ideas before moving to conceptual drawings."

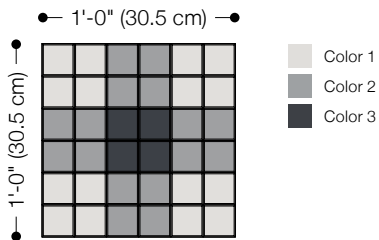
– Kelly Harris Smith, designer of Gingham



Exploded Axonometric



Standard Pattern



A

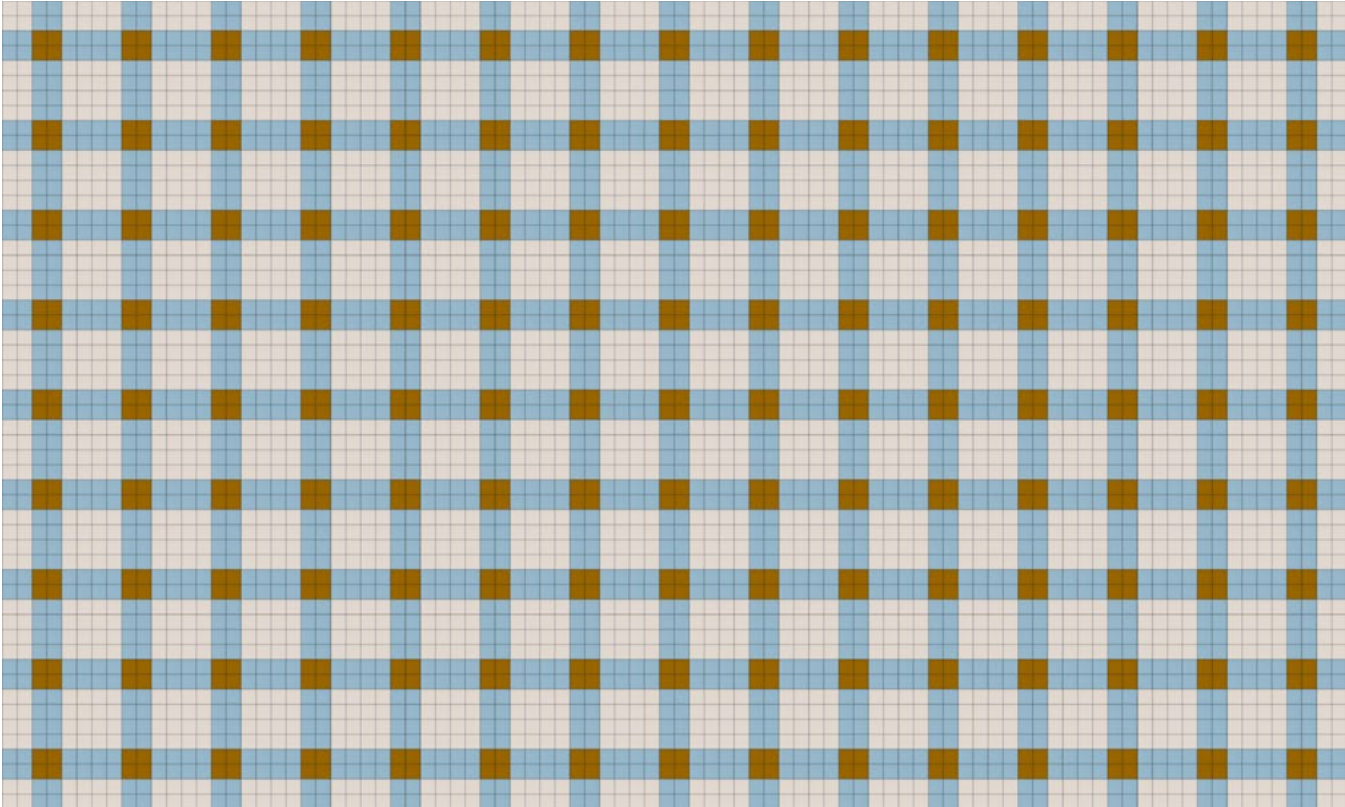
Standard Tile

One Module in Standard Pattern

Suggested Colorways

Gingham is customizable in over ninety colors of 100% Wool Design Felt. The following pages include suggested colorways to serve as a source for inspiration. Use the key below to identify the position of a color in each colorway. We recommend referencing physical samples when making final color selections.

Have your own ideas? Head to the **Design Tool** to build your own unique wall and select from over ninety colors.



Gingham Suggested Colorway 001
(See rendering on page 2)

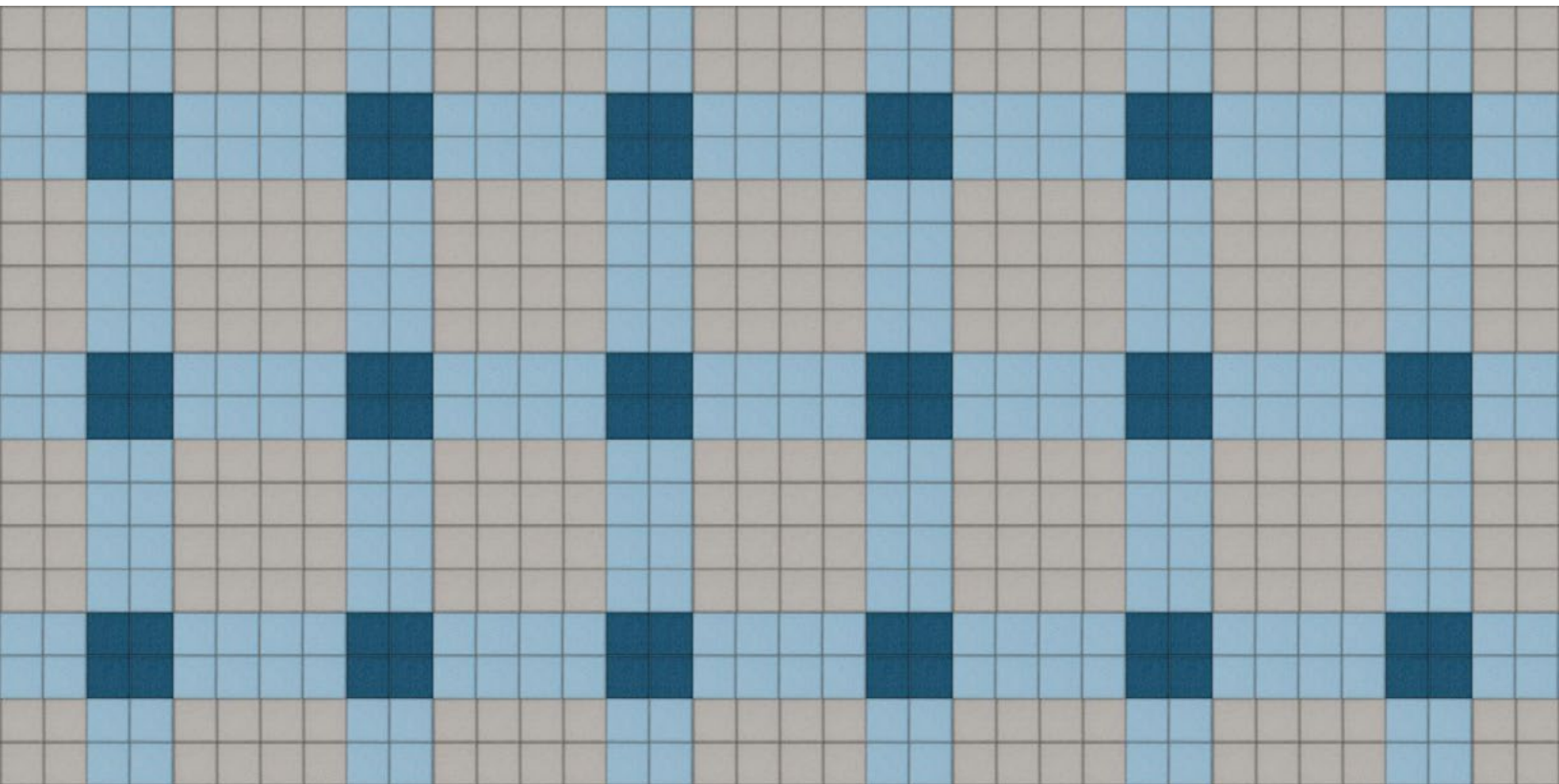
● 1'-0" (30.5 cm) ●

● 1'-0" (30.5 cm) ●

A

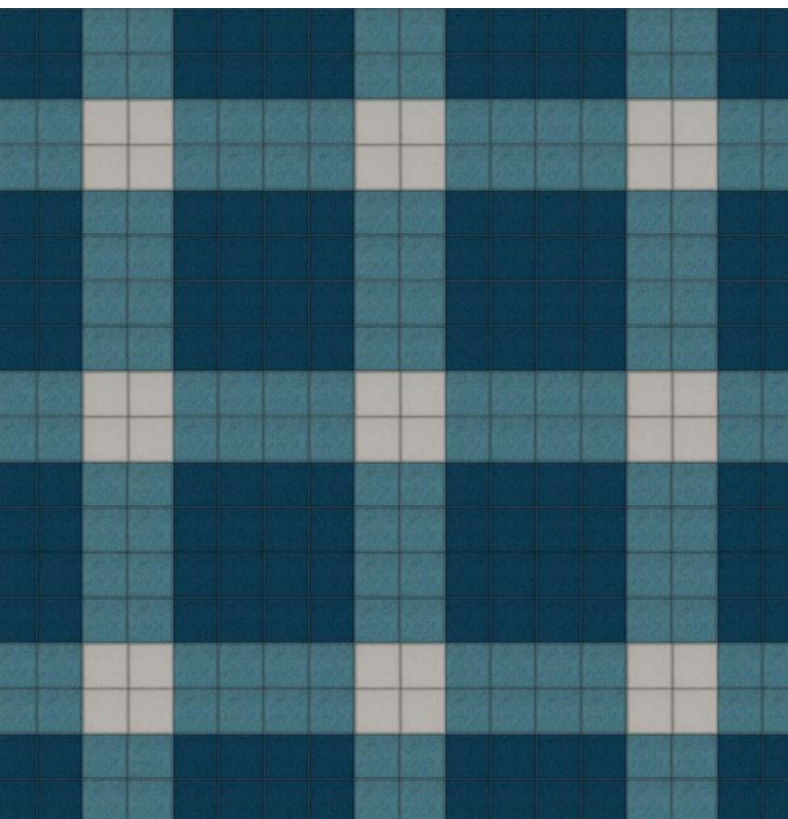
- Color 1: 100 Wollweiß
- Color 2: 551 Eis
- Color 3: 550 Ocker

Standard Tiles
One Module in Standard Pattern



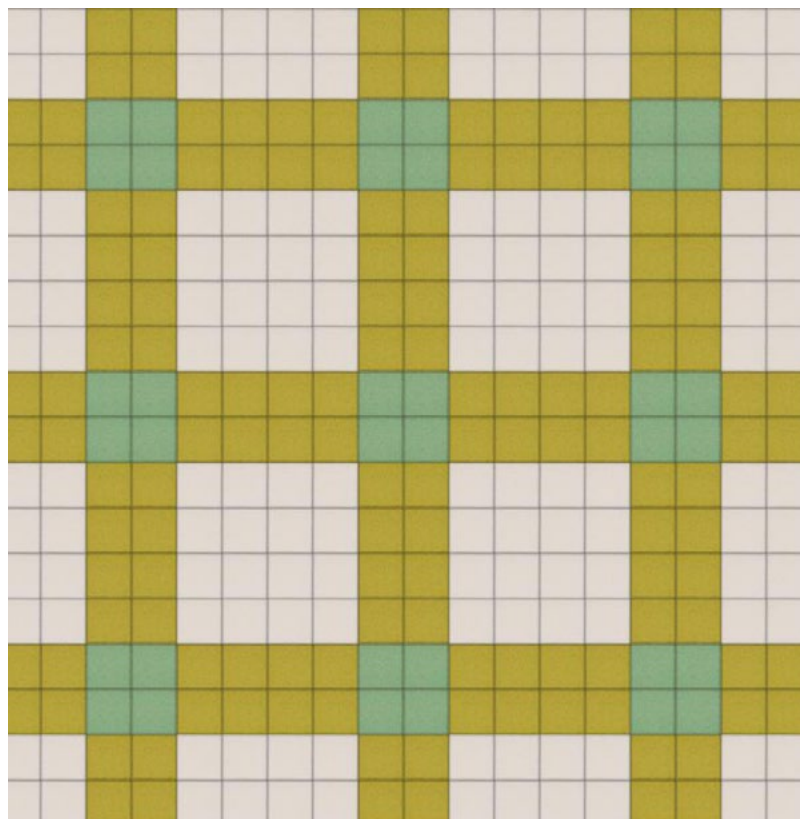
Gingham Suggested Colorway 002

Color 1: 428 Silber, Color 2: 551 Eis, Color 3: 698 Dunst



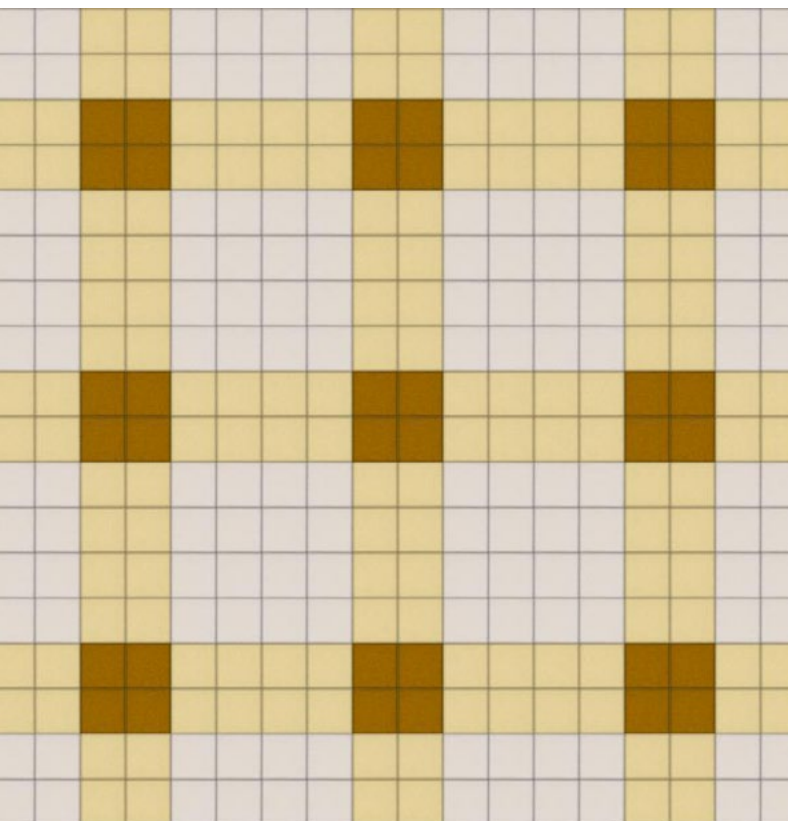
Gingham Suggested Colorway 003

Color 1: 215 Meer, Color 2: 483 Adria, Color 3: 428 Silber



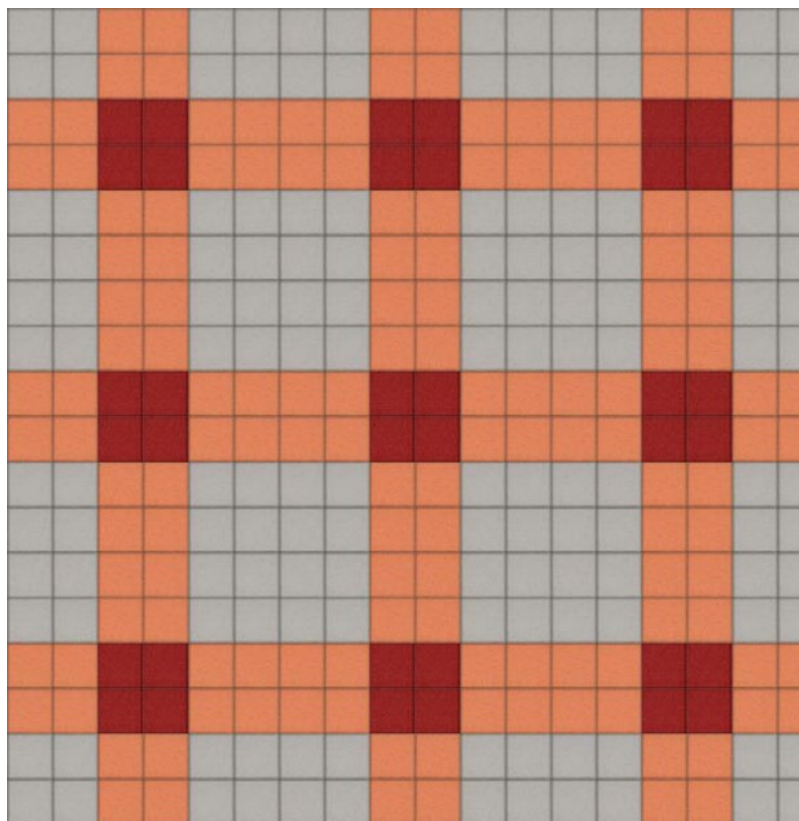
Gingham Suggested Colorway 004

Color 1: 100 Wollweiß, Color 2: 027 Kartause, Color 3: 260 Sprießen
(See photography on page 3)



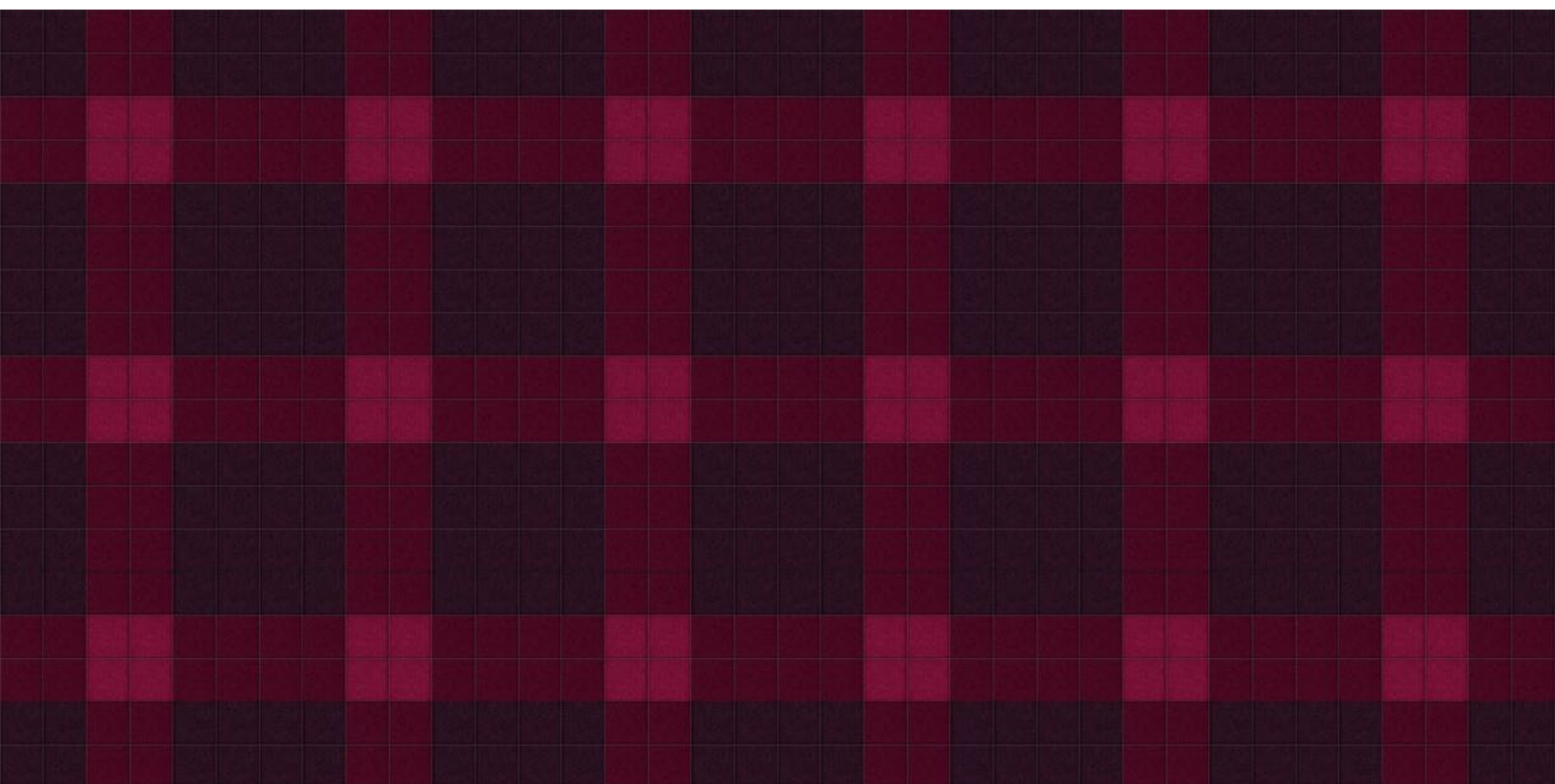
Gingham Suggested Colorway 005

Color 1: 100 Wollweiß, Color 2: 535 Sesam, Color 3: 550 Ocker



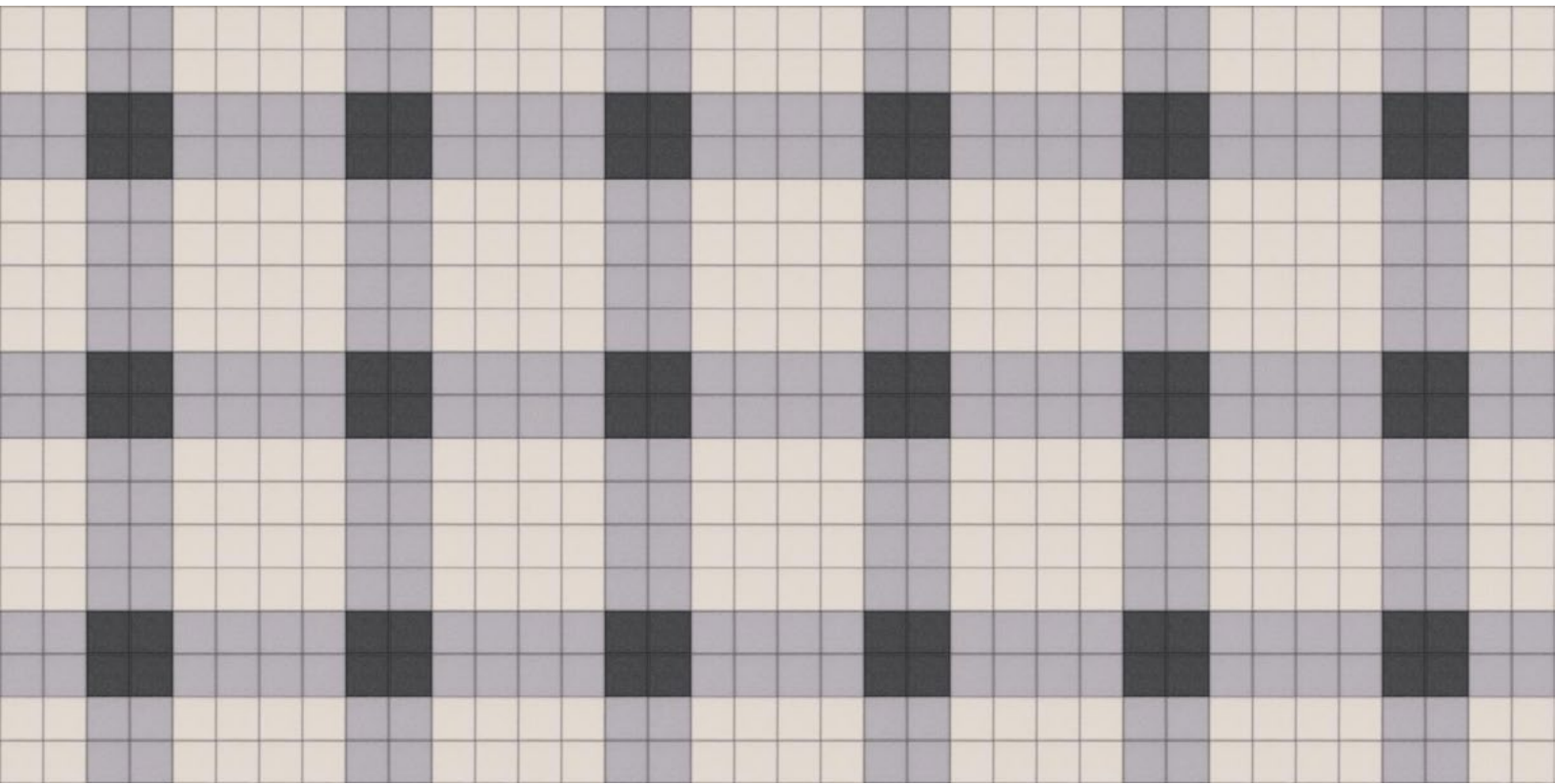
Gingham Suggested Colorway 006

Color 1: 428 Silber, Color 2: 487 Pfirsich, Color 3: 180 Terracotta



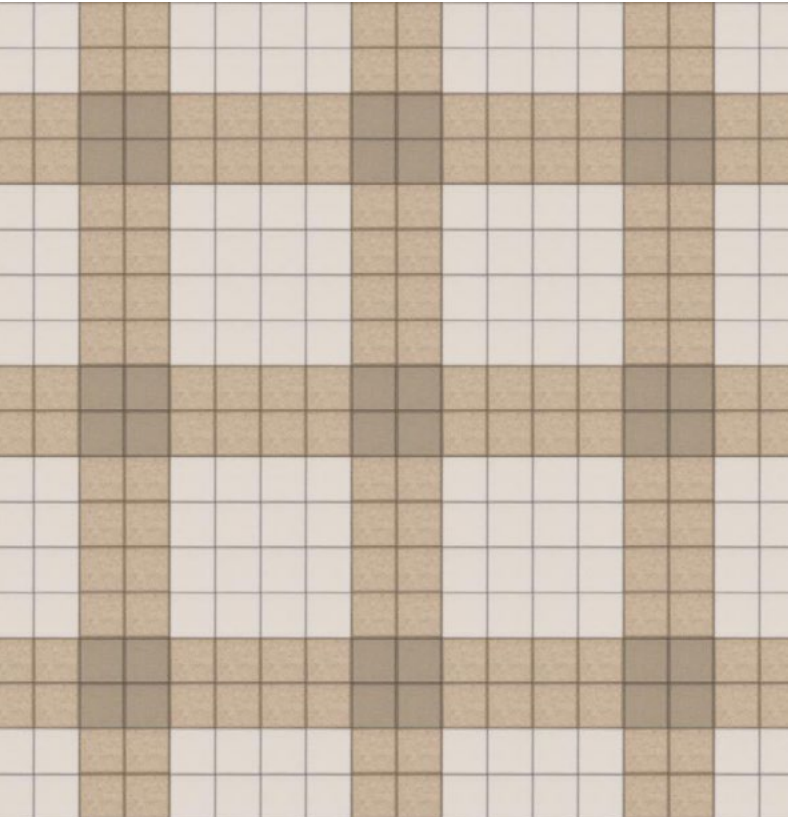
Gingham Suggested Colorway 007

Color 1: 437 Aubergine, Color 2: 209 Bordeaux, Color 3: 640 Granat



Gingham Suggested Colorway 008

Color 1: 100 Wollweiß, Color 2: 021 Beton, Color 3: 425 Taubengrau



Gingham Suggested Colorway 009

Color 1: 100 Wollweiß, Color 2: 481 Sandstein, Color 3: 529 Champagner



Gingham Suggested Colorway 010

Color 1: 446 Kohle, Color 2: 425 Taubengrau, Color 3: 529 Champagner

Product	Gingham
Designer	Kelly Harris Smith
Content	100% Wool Design Felt + Akustika Substrate (60% post-consumer recycled content)
Tile Size	1'-0" x 1'-0" (30.5 x 30.5 cm)
Thickness	3/4 in (19 mm)
Thickness Tolerance	±1/16 in (2 mm)
Edge	Exposed (02 Medium Grey Substrate)
Pattern Elements	A
Pattern Repeat Size	1'-0" x 1'-0" (30.5 x 30.5 cm)
Color Option	3-Color per wall
Design Tool	A Design Tool is available to assist in the design of Gingham. This tool allows patterns to be configured and is available at: dt.filzfelt.com
Custom	13-Color or more per wall is available and must be quoted
Durability	Contract or residential
Lead Time	Made to order and certain lead times will apply
Installation	Install in the pattern as specified and attach to a wall surface using a heavy-duty construction adhesive. Tiles may be trimmed to size with a utility knife. Refer to Gingham Installation Instructions for complete guidance.
Maintenance	Vacuum occasionally to remove general air-borne debris. Should soiling occur, spot clean with mild soap and lukewarm water. Avoid aggressive rubbing as this can continue the felting process and change the surface appearance of the felt. Refer to Product Maintenance and Cleaning Guide for detailed care instructions.
Variation	Wool felt is a natural material and color variation and inclusions of natural fiber on the surface are evidence of the 100% natural origin of the material. Product color is only indicative, as it is not possible to assure consistency of color in a natural product due to the natural color of raw wool and absorption of dyes. Color matching cannot be guaranteed on shipments and variation will be more pronounced beyond the normal commercial range.
Environmental	100% Wool Design Felt is 100% biodegradable/compostable and Akustika 10 is 100% recyclable Contains no formaldehyde, 100% VOC free, no chemical irritants, and free of harmful substances 100% Wool Design Felt contributes to LEED® Download Declare Label Living Building Challenge Criteria Compliant Oeko-Tex® Standard 100 Certified Product Class II (100% Wool Design Felt + Akustika 10 Substrate) Prop 65 Compliant Meets VOC test limits for the CDPH v1.2 method
Acoustics	ASTM C 423: NRC – 0.75, SAA – 0.75
Colorfastness to Light	Class 4–5 (40 hours)
Colorfastness to Crocking	Class 3–4 (wet), Class 4–5 (dry)
Flammability	Test reports available upon request

Standard Colors

							
487 Pfirsich	023 Koralle	945 Drachenfrucht	221 Himbeere	136 Weinrot	209 Bordeaux	102 Kirsche	201 Rot
							
125 Tomate	179 Hellrot	180 Terracotta	173 Mango	105 Rost	573 Kupfer	116 Orange	495 Abricot
							
124 Gelb	131 Honig	509 Kamel	550 Ocker	274 Senf	108 Zitrone	403 Mais	535 Sesam
							
203 Vanille	027 Kartause	384 Lind	713 Kiwi	377 Maigrün	732 Farn	378 Oliv	260 Sprießen
							
343 D'Grün	435 Smaragd	625 Pinie	248 Jade	472 Minze	575 Salbei	483 Adria	548 Türkis
							
312 Lagune	345 Pazifik	308 Petrol	698 Dunst	405 Stahl	215 Meer	540 Ozean	533 Indigo
							
282 D'Blau	111 Traube	626 Azur	647 Kobalt	686 Enzian	272 Royal	286 H'Blau	995 Wasser
							
458 Bewölkt	284 Himmel	613 Gletscher	551 Eis	113 Immergrün	099 Lila	667 Amethyst	269 Violett
							
242 Pink	640 Granat	634 Erröten	671 Pfingstrose	255 Flieder	437 Aubergine	250 Trüffelbraun	220 Rehbraun
							
411 Alpaka	190 Natur-meliert	200 Natur	331 Sahara	311 Mandel	467 Sand	481 Sandstein	100 Wolweiß
							
110 Rohweiß	160 Beige	529 Champagner	150 Weiß	428 Silber	427 Stein	021 Beton	170 Asche
							
423 Hellgrau	408 Taupe	175 Graphit	425 Taubengrau	446 Kohle	300 Anthrazit	426 Schwarz	