

Tac-Tile Installation Instructions

These installation recommendations consist of common-sense practices for direct glue tile products. Installers should rely upon their own professional experience and understanding of their unique requirements to be the best guide to a successful installation. Normal variations in the thickness of the felt and acoustic substrate in addition wall surface variation will result in tiles that are at different distances off the wall surface and may result in alignment issues with adjacent tiles. These issues are not considered a defect and planning should be taken to distribute these variations in a manner that is aesthetically pleasing.

Tools Needed

Bar level or laser level

Carpenter's square

Heavy-duty construction adhesive (such as Liquid Nails LN-903, LN-FRP, and Loctite Express)

Standard caulking gun or 1/8" v-notch trowel

Utility knife (such as Olfa or similar) with extra blades or Table saw with fine tooth blade (for trimming panels)

Utility knife (such as Olfa or similar) with extra blades or Oscillating multi-tool with fine tooth blade (for device cut-outs)

It is recommended that a cleaning solution be available to remove any adhesive that transfers onto the face of the wool felt. Adhesive must be removed with the solution before it has dried.

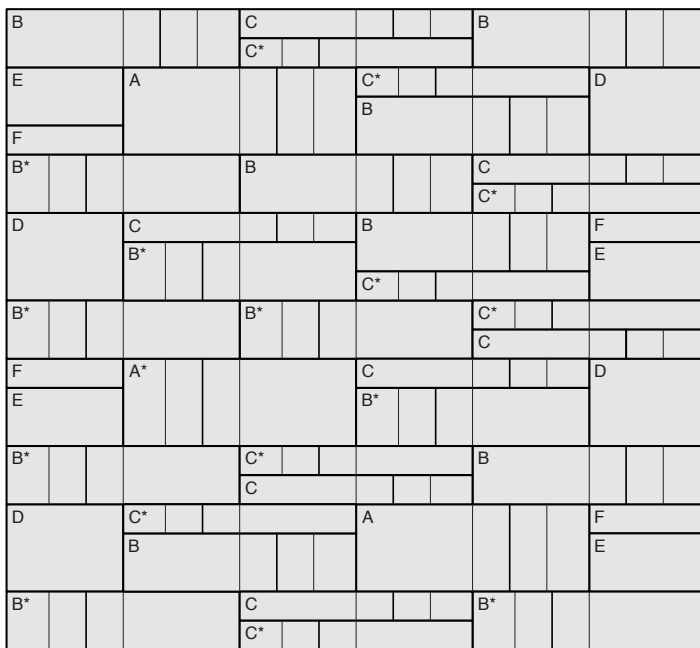
Components Provided

Tiles (as ordered)



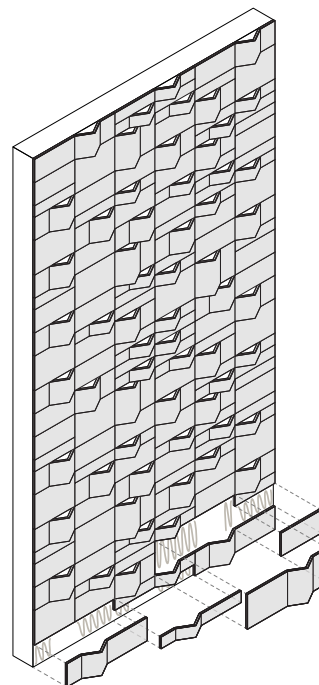
Standard Pattern

Tac-Tile is installed in the standard pattern shown below unless otherwise specified. Tiles A, B, and C are designed with an asymmetric triangular peak which reveals the wall behind. These tiles will be rotated to orient the peak on either the right or left side of the tile. An asterisk (*) on the standard pattern diagram below indicates a module rotated 180°. These peaks should always be offset from each other. Care should be taken to ensure the pattern repeat is maintained to prevent exact alignment of these peaks between rows.



Standard Pattern Elevation

Asterisk (*) indicates module rotated 180°



Exploded Axonometric

Installation Instructions

- 1 Never vertically stack Tiles as this will flatten the three-dimensional felt detail, thereby damaging the Tile. Handle the material with care and avoid putting weight onto the Tiles.
- 2 Inspect the product. Subtle color and texture variations even within the same tile are a normal aspect of this product. It is advisable to inspect for these irregularities and plan the layout accordingly, making sure to disperse any minor color variation evenly. In the case of product defect or damage in transit, FilzFelt must be notified within five (5) business days. FilzFelt cannot accept a return or warranty claim on any material that has been installed.
- 3 Allow Tiles to acclimate to the installation environment. After the shipping crates have been opened, the Tiles should be laid out individually on the floor for at least forty-eight (48) hours. Variations in temperature and humidity may affect the size. The flat portions of Tiles may be trimmed with a carpenter's square and sharp utility knife or fine tooth blade and table saw to correct any irregularity or discrepancy between Tiles.
- 4 While the Tiles are becoming acclimatized, clean the work surface. It should be smooth, dry, and dust-free to allow the best possible adhesion. A Level 4 Finish wall preparation is sufficient.
- 5 Use the bar level or laser level to determine a base level line for the Tiles. This line will set the level for the entire installation so it is most important to get this right.
- 5 Tiles are applied according to the standard pattern unless otherwise specified. Tac-Tile A, B, and C Tiles are designed with an asymmetric triangular peak which reveals the wall behind. These will be rotated 180° as part the standard pattern to orient the peak on either the right or left side. These peaks should never directly align with the row above or below. The standard pattern repeat is designed to prevent direct alignment of these peaks between adjacent rows. An asterisk (*) on the standard pattern diagram indicates a rotated module. Plan out the pattern before adhering the Tiles and make any adjustments to ensure any minor color variation is dispersed throughout the wall.
- 7 Prepare a cleaning solution to remove any adhesive that transfers onto the face of the wool felt. A mild enzyme-based detergent (such as Tide Free) is recommended. Create a dilute solution by adding three (3) parts water to one (1) part detergent in a clean container. To remove adhesive before it has dried, use a clean paper towel to gently blot the detergent into area. Press and release, press and release. Using a separate container of clear water, use clean, moist paper towels to blot more water into the stain. Press and release, press and release. Finish by blotting firmly with clean, dry paper towels until the area is nearly dry.
IMPORTANT: Adhesive must be removed before dry. Avoid aggressive rubbing, as this can continue the felting process and change the surface appearance of the felt.
- 8 Adhesive placement is critical to avoid any visible glue at the reveals. Only apply adhesive to flat sections of the Tac-Tile A, B, and C Tiles, and never to the inside of the triangular peak. Using a standard caulking gun, apply a thick bead of adhesive around the perimeters of the Tile sections about 1/2" to 1" (1.3 to 2.5 cm) from the edge. Tac-Tile D, E, and F Tiles are flat Tiles and glue will be applied to the perimeter of the tile using the same technique.
- 9 Apply the first four (4) tiles in sequence edge-to-edge making sure that the edges are properly butted up against one another and all are perfectly level. Using clean fingers, press against the tile to insure best adhesion, taking care not to smear any adhesive on the wall which will remain visible. Check again for level.
- 10 To cut custom Tile sizes, use a sharp utility knife and long straight edge or table saw with fine tooth blade. If cutting with a utility knife, make a first pass with light pressure to score the felt. Next, make one (1) to two (2) additional passes using firm pressure and making sure the blade is plumb. **IMPORTANT:** Always use a sharp blade and change blades frequently.
- 11 To cut device cut-outs, use a sharp utility knife and carpenter's square or oscillating multi-tool with fine tooth blade. If cutting with a utility knife, make a first pass with light pressure to score the felt. Next, make one (1) to two (2) additional passes using firm pressure and making sure the blade is plumb. **IMPORTANT:** Always use a sharp blade and change blades frequently.
Devices may then be either wall-mounted or panel-mounted as specified by the client. All cutting and finishing of the cut-outs and installation of electrical devices are the responsibility of the purchaser.
- 12 Repeat the above steps until the first course is completed.
- 13 Allow the first row to set up for approximately twenty (20) minutes before installing the row above as the tiles may slip.
- 14 Move up to the next row and follow the above procedure, ensuring that the tiles are butted firmly against one another. Continue checking level throughout the installation. Repeat until complete.

Cleaning Instructions

Like any natural fiber, a minimal approach should always be taken to clean wool felt since the cleaning method could potentially do more harm than the soiling or stain. The cleaning approach should be (1) dust with a lint roller, (2) vacuum with a clean, soft brush, (3) clean with water and mild detergent, and (4) clean with chemical spot remover. **IMPORTANT:** Always test any cleaning method in an inconspicuous area before attempting general cleaning.

For complete instructions, refer to the Product Maintenance + Cleaning Guide at filzfelt.com/cleaning-guide.