

The background of the entire image is a repeating geometric pattern of chevron-shaped blocks. The pattern is composed of several colors: a vibrant green, a muted sage green, a dark charcoal grey, and a light grey. The blocks are arranged in a staggered, interlocking fashion, creating a dynamic and modern visual effect. The text is overlaid on this pattern.

Chevron Block

Acoustic Wall Tile

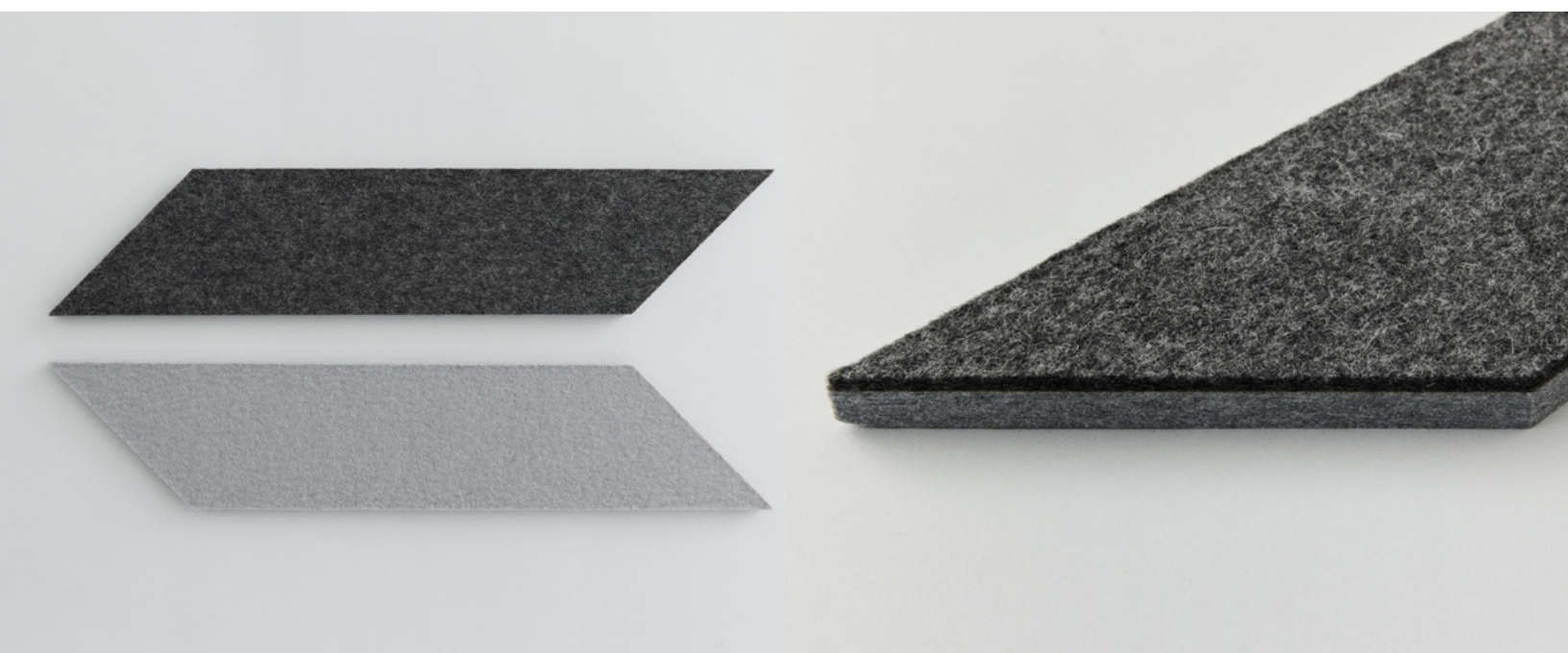
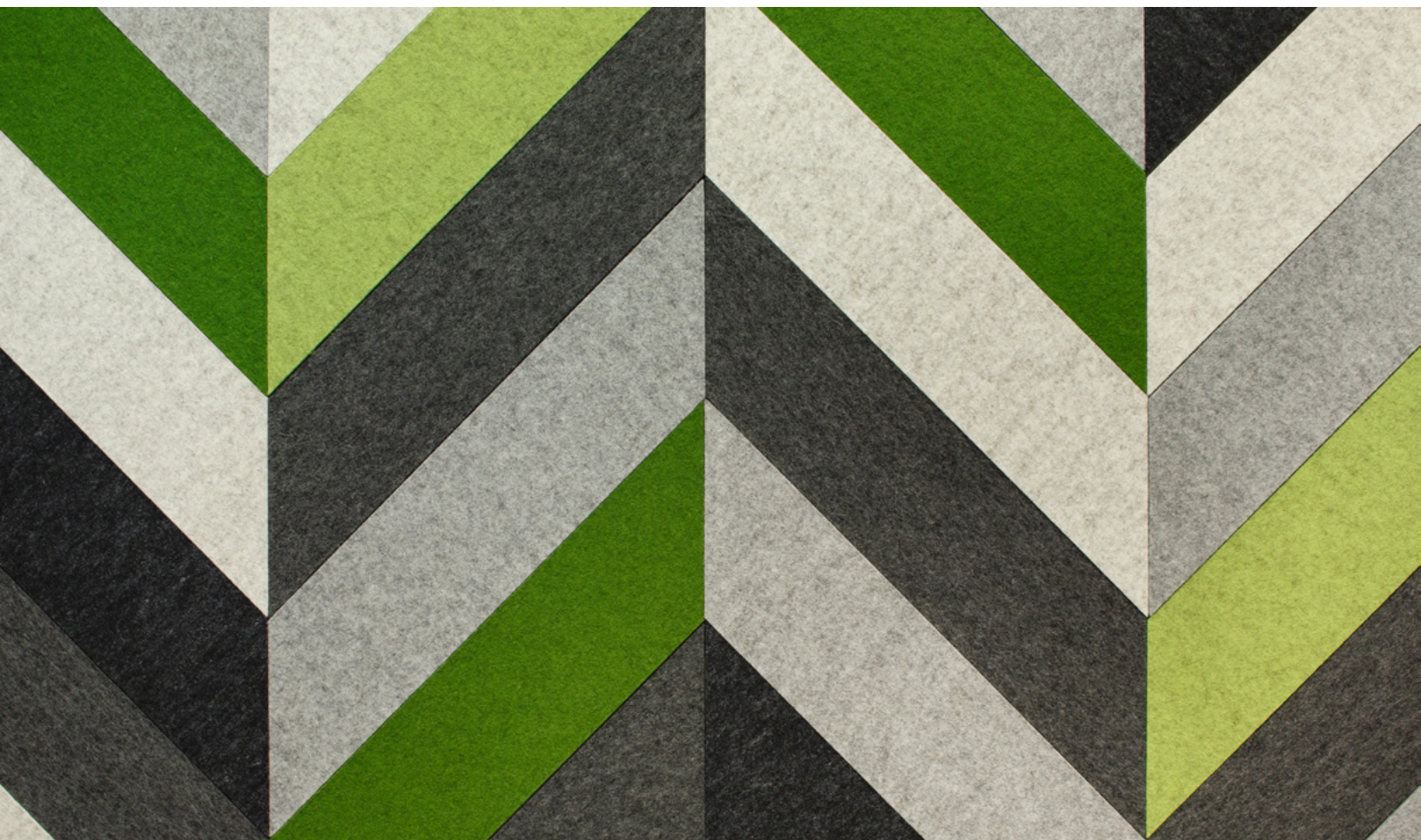
filzfelt •

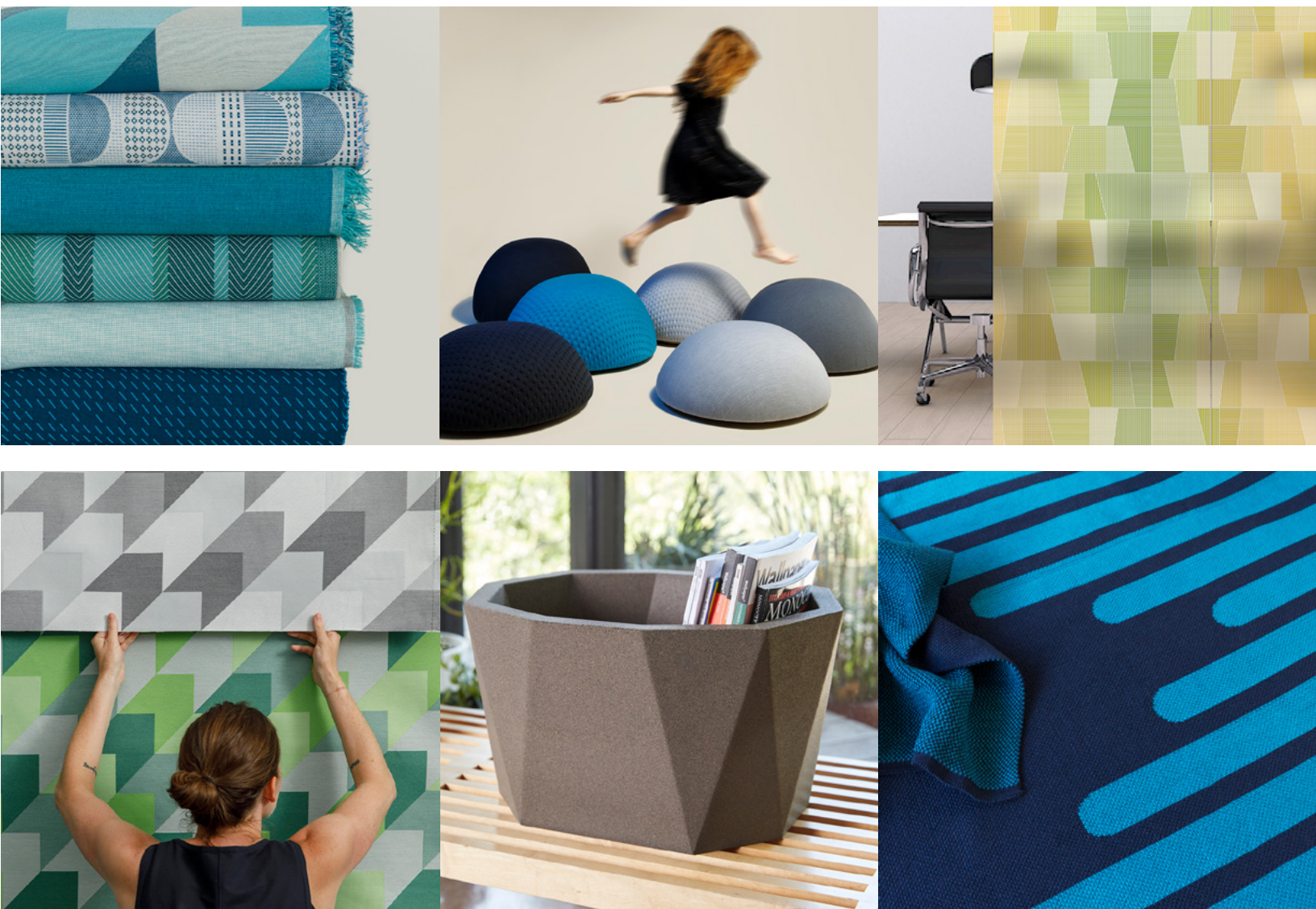


Chevron Block gets right to the point.

Chevron Block is a riff on the zig-zag which can be played up to dramatic or mellowed to subtle sophistication. The lines are segmented with two tile shapes that allow lots of variety in patterning and these thin tiles provide sound absorption well beyond their size.

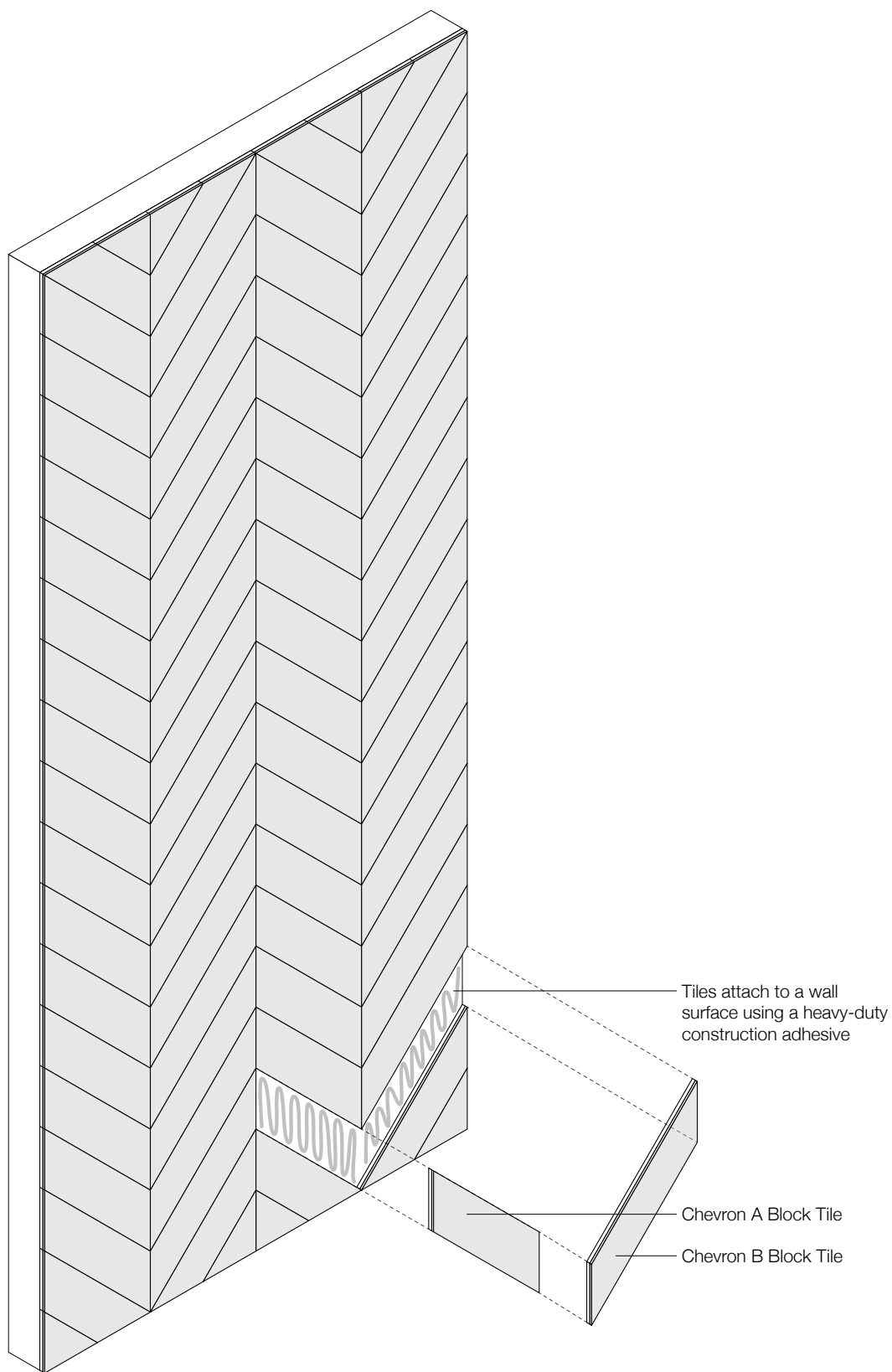
Chevron Block was designed by Kelly Harris Smith, a textile and product designer who specializes in natural, sustainable, and recycled materials.





"I find inspiration almost everywhere I go. Whether it's the color of the sky at a particular moment, the texture of a manhole cover or the patterning on a facade, I'm constantly recording. Depending on the type of project, I photograph, sketch, collage and even stitch my ideas before moving to conceptual drawings."

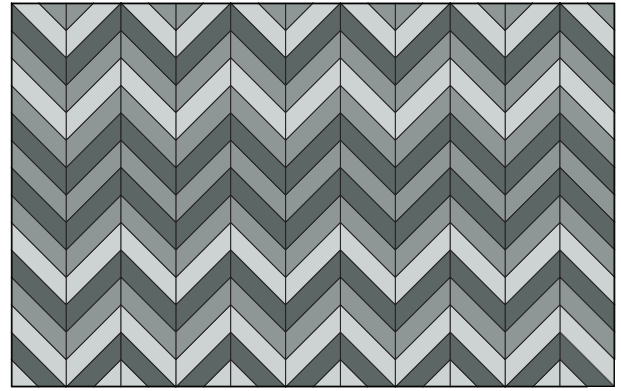
– Kelly Harris Smith, designer of Chevron Block



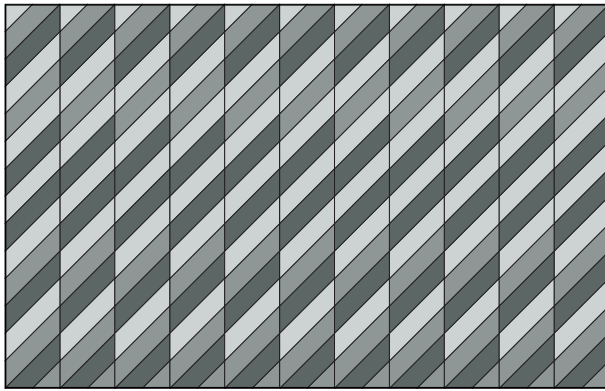
Exploded Axonometric



2-Color Pattern
Code: FF-KS-CHEV-001



3-Color Pattern 1
Code: FF-KS-CHEV-002



3-Color Pattern 2
Code: FF-KS-CHEV-0 03



6-Color Pattern
Code: FF-KS-CHEV-004

Patterns are shown as suggested installations and may be configured with any combination of FilzFelt colors

Product	Chevron Block
Designer	Kelly Harris Smith
Content	100% Wool Design Felt + Akustika 10 Substrate (60% post-consumer recycled content)
Tile Options	Chevron A Chevron B
Tile Sizes	Chevron A: 1'-5" x 4 1/4" (43.1 x 10.8 cm) Chevron B: 1'-5" x 4 1/4" (43.1 x 10.8 cm)
Thickness	1/2 in (13 mm)
Thickness Tolerance	±1/16 in (2 mm)
Edges	Standard
Color Options	1-Color, 2-Color, 3-Color or 4-Color per wall
Design Tool	A Design Tool is available to assist in the design of Block tiles. This tool allows patterns to be configured and is available at: dt.filzfelt.com
Custom	Custom sizes, shapes, and mounting options are available and must be quoted Tiles in 5/8 in (15 mm) thickness available with a 10% upcharge 5-Color or more per wall is available and must be quoted
Durability	Contract or residential
Lead Time	Made to order and certain lead times will apply
Installation	Install in the pattern as specified and attach to a wall surface using a heavy-duty construction adhesive. Tiles may be trimmed to size with a utility knife. Refer to installation instructions for complete guidance.
Maintenance	Vacuum occasionally to remove general air-borne debris. Should soiling occur, spot clean with mild soap and lukewarm water. Avoid aggressive rubbing as this can continue the felting process and change the surface appearance of the felt. Refer to Product Maintenance + Cleaning for detailed care instructions.
Variation	Wool felt is a natural material and color variation and inclusions of natural fiber on the surface are evidence of the 100% natural origin of the material. Product color is only indicative, as it is not possible to assure consistency of color in a natural product due to the natural color of raw wool and absorption of dyes. Color matching cannot be guaranteed on shipments and variation will be more pronounced beyond the normal commercial range.
Environmental	100% Wool Design Felt is 100% biodegradable/compostable and Akustika 10 contains minimum 60% post-consumer recycled content and is 100% recyclable Contains no formaldehyde, 100% VOC free, no chemical irritants, and free of harmful substances 100% Wool Design Felt and Akustika 10 contribute to LEED® Download Declare Label Living Building Challenge Criteria Compliant Oeko-Tex® Standard 100 Certified Product Class II (100% Wool Design Felt + Akustika 10 Substrate) Meets VOC test limits for the CDPH v1.2 method
Acoustics	ASTM C 423: NRC – 0.50, SAA – 0.51
Colorfastness to Light	Class 4–5 (40 hours)
Colorfastness to Crocking	Class 3–4 (wet), Class 4–5 (dry)
Flammability	Test reports available upon request

Standard Colors

100% Wool Design Felt

							
487 Pfirsich	023 Koralle	945 Drachenfrucht	221 Himbeere	136 Weinrot	209 Bordeaux	102 Kirsche	201 Rot
							
125 Tomate	179 Hellrot	180 Terracotta	173 Mango	105 Rost	573 Kupfer	116 Orange	495 Abricot
							
124 Gelb	131 Honig	509 Kamel	550 Ocker	274 Senf	108 Zitrone	403 Mais	535 Sesam
							
203 Vanille	027 Kartause	384 Lind	713 Kiwi	377 Mairün	732 Farn	378 Oliv	260 Sprießen
							
343 D'Grün	435 Smaragd	625 Pinie	248 Jade	472 Minze	575 Salbei	483 Adria	548 Türkis
							
312 Lagune	345 Pazifik	308 Petrol	698 Dunst	405 Stahl	215 Meer	540 Ozean	533 Indigo
							
282 D'Blau	111 Traube	626 Azur	647 Kobalt	686 Enzian	272 Royal	286 H'Blau	995 Wasser
							
458 Bewölkt	284 Himmel	613 Gletscher	551 Eis	113 Immergrün	099 Lila	667 Amethyst	269 Violett
							
242 Pink	640 Granat	634 Erröten	671 Pfingstrose	255 Flieder	437 Aubergine	250 Trüffelbraun	220 Rehbraun
							
411 Alpaka	190 Natur-meliert	200 Natur	331 Sahara	311 Mandel	467 Sand	481 Sandstein	100 Wollweiß
							
110 Rohweiß	160 Beige	529 Champagner	150 Weiß	428 Silber	427 Stein	021 Beton	170 Asche
							
423 Hellgrau	408 Taupe	175 Graphit	425 Taubengrau	446 Kohle	300 Anthrazit	426 Schwarz	

Akustika 10 Substrate

		
05 Ice	02 Medium Grey	03 Dark Grey