

# Hanging Panel Track System Installation Instructions

## Wall Mounted

These installation recommendations consist of common-sense practices for installing drapery track and similar products. Installers should rely upon their own professional experience and understanding of their unique requirements to be the best guide to a successful installation.

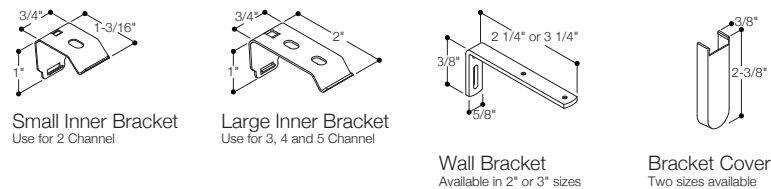
### Tools Needed

Anchors (appropriate to wall material)  
Drill with appropriate bits  
Fine phillips screwdriver  
Ladder  
Laser level  
Pencil  
Screws (appropriate to wall material)

### Components

Length(s) of Track

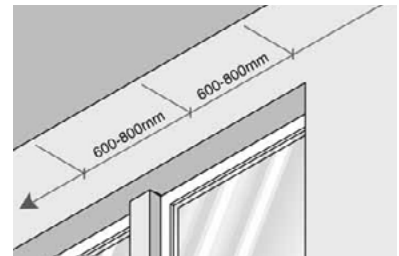
Inner Brackets, Wall Brackets, Bracket Covers



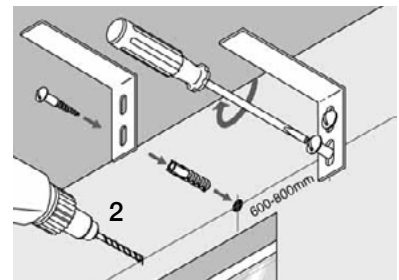
Hanging Panels (as ordered)

### Installation Instructions

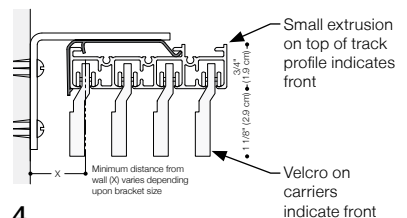
- 1 Assemble track first using any bridges using separate assembly instructions.
- 2 Draw a straight line or use a laser level along the top of the wall where the track is to be installed and mark the position of the Wall Brackets. Each end Wall Bracket should be no more than 4" (10 cm) from the ends of the track and each subsequent Wall Bracket should be spaced equally apart at 24" to 30" (600 to 800 mm) intervals.
- 2 Drill holes into the wall at the center position of the slots on the Wall Brackets. This will ensure a 3/8" (1 cm) adjustment up and down, if required. Screw the Wall Brackets onto the wall using wall anchors as necessary.
- 3 Attach the Inner Bracket to the Wall Bracket. The Small Inner Bracket attaches by turning the Inner Bracket 20-30° to the Wall Bracket and turn to lock. The Larger Inner Bracket is spring loaded—set on the track and rotate the bracket to lock.
- 4 A small extrusion on top of the track indicates the front. The velcro on the carriers also indicates the front. The extrusion and velcro on the carriers should be oriented accordingly. Raise track to inner bracket and snap in place. **IMPORTANT:** For combination systems to make up six or seven channel tracks, always fit the front track first. In some cases the rear brackets and tracks will have to be installed after the front track has been fixed into position.



1

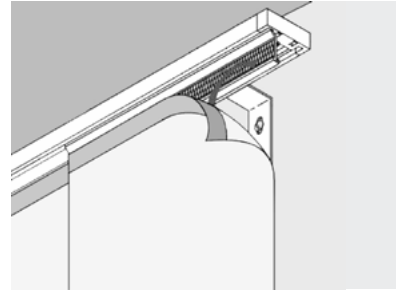


2-3



4

- 5 Move carriers to ensure that the separate carriers pick up one another and move in sequence. Should one connection between carriers miss, simply clip back into place.
- 6 Bracket covers are provided and snap over the bottom of the wall bracket.
- 7 Hang the Hanging Panels onto each of the carriers using the velcro tape. Ensure that the felt is smoothed along the full length of the carrier.



7

# Hanging Panel Track System Installation Instructions

## Ceiling Surface Mounted

These installation recommendations consist of common-sense practices for installing drapery track and similar products. Installers should rely upon their own professional experience and understanding of their unique requirements to be the best guide to a successful installation.

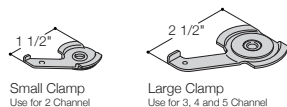
### Tools Needed

Bar level or laser level  
Carpenter's square  
Chalk line  
Drill  
Tape Measure  
Utility knife or oscillating multi-tool with a fine tooth blade (80 plus tooth)  
Ceiling screw appropriate for wall type (not included)

### Components

Length(s) of Track

Clamps



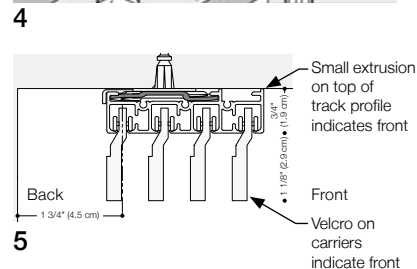
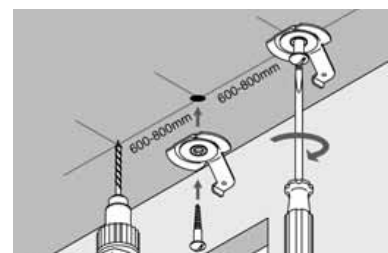
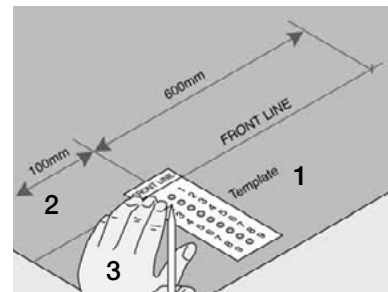
Template

Hanging Panels (as ordered)

### Installation Instructions

- 1 A template is supplied which shows the correct drill positions for the track. The FRONT LINE on the template refers to the position of the front of the track. Draw a straight line along the ceiling marking the FRONT LINE of the track, ensuring clearance of door handles, sills, etc. is maintained along the full length.
- 2 Mark along this line the position of the locking clamps. Each end clamp should be 4" (10 cm) from the ends of the track and each subsequent clamp should be spaced equally apart at 24-30" (60-80 cm) intervals.
- 3 Using the template, mark the drill holes indicated for each clamp using a pencil.
- 4 Screw the clamps flat side to the ceiling, at the points marked. Fix until clamps are secure but can still be easily rotated, leaving the tail pointing to the back.
- 5 A small extrusion on top of the track indicates the front. The velcro on the carriers also indicates the front. The extrusion and velcro on the carriers should be oriented accordingly.
- 6 Raise the track to the clamps (6a). Start at the center and rotate clamps until they touch the back of the track (6b). It may be necessary to gently tap the clamps with a light hammer to lock them into place. Move along the track until all the clamps are locked.
- 7 Move carriers to ensure that the separate carriers pick up one another so that they move in sequence. Should one connection between carriers miss, simply clip back into place.
- 8 Hang the Hanging Panels onto each of the carriers using the velcro tape. Ensure that the felt is smoothed along the full length of the carrier.

Note: For combination systems to make up six or seven channels, always fit the front clamps and track first.



# Hanging Panel Track System Installation Instructions

Cable Suspended (available for one channel with stationary panels only)

These installation recommendations consist of common-sense practices for installing drapery track and similar products. Installers should rely upon their own professional experience and understanding of their unique requirements to be the best guide to a successful installation.

## Tools Needed

Ladder

Wire cutter

Laser or string level

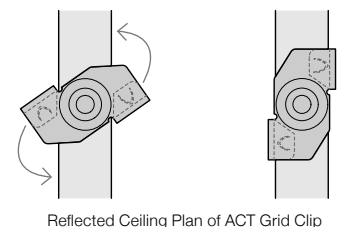
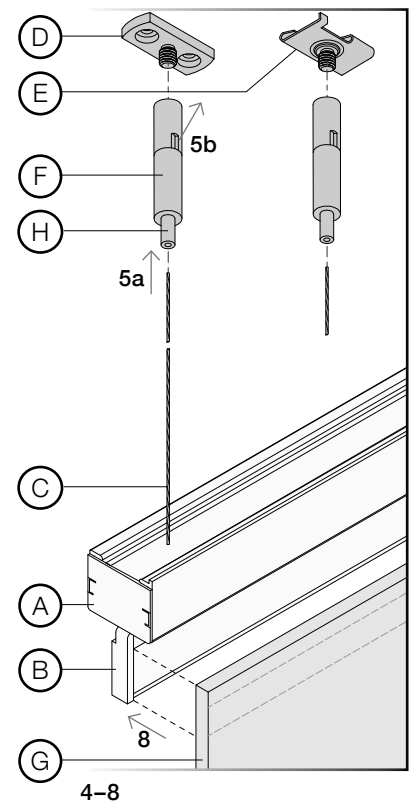
If using Ceiling Mounting Plate (as ordered): Drill and ceiling screws appropriate for ceiling type (not included)

## Components

- A** Length(s) of Track with Carrier(s) (**B**) and Suspension Cable (**C**) v
- D** 2 x Ceiling Mounting Plates per length(s) of Track (as ordered)
- E** 2 x ACT Grid Clips ACT Grid Clip for 9/16 in (1.4 cm) or 15/16 in (2.4 cm) Grid Sizes per length(s) of Track (as ordered)
- F** 1 x Cable Gripper (female) per Ceiling Mounting Plate or ACT Grid Clip (as ordered)
- G** Hanging Panels (as ordered)

## Installation Instructions

- 1** Inspect the length(s) of track. In the case of product defect or damage in transit, FilzFelt must be notified within five (5) business days. FilzFelt cannot accept a return or warranty claim on any product that has been installed.
- 2** Each length of track includes Carrier(s) (**B**) and Suspension Cable (**C**) pre-installed at each suspension point. A small extrusion on top of the track indicates the front. The velcro on the Carriers (**B**) also indicates the front. The extrusion and velcro on the carriers should be oriented accordingly.
- 3** If no ceiling attachment hardware is ordered with the track, skip to step 6.
- 4** For Ceiling Mounting Plate (**D**): Fasten a Ceiling Mounting Plate to the ceiling using screws appropriate for the ceiling type (not included). Screw a female Cable Gripper (**F**) onto the plate until tight.  
  
For ACT Grid Clip (**E**): The clip includes tabs that attach to standard ACT (acoustic ceiling tile) ceiling grid in 9/16" (1.4 cm) or 15/16" (2.4 cm) grid sizes. To install the ACT Grid Clip, first screw a female Cable Gripper (**F**) onto the clip until tight. Next, lift the ACT Grid Clip with Cable Gripper to the ACT ceiling grid with the tabs on either side of the grid, press the clip against the grid, and twist to secure the tabs on the grid. (4a)
- 5** Raise the track to within 3'-0" (91.4 cm) of the Ceiling Mounting Plate (**D**) or ACT Grid Clip (**E**) and insert a length of Suspension Cable (**C**) into the Cable Gripper (**F**) (5a) and feed the cable through until it exits the hole on the side of the gripper (5b). The gripper is self-locking. To release the cable, press down on the Spring-Loaded Plunger (**H**). **IMPORTANT:** Do not trim the cable until the baffles have been leveled and adjusted.
- 6** The track should be leveled and adjusted using a laser or string level. Adjust the Suspension Cable (**C**) lengths by pressing down on the Spring-Loaded Plunger (**H**) on each Cable Gripper (**F**) and feed more or less cable through.
- 7** Any extra Suspension Cable (**C**) may be trimmed. **IMPORTANT:** If cutting off excess cable, leave at least 1" (2.5 cm) of cable showing. The Cable Gripper (**F**) is self-locking so there is no need to crimp the cable.
- 8** Hang the Hanging Panels (**G**) onto the Carrier(s) (**B**) using the velcro tape. Ensure that the felt is smoothed along the full length of the Carrier(s) (**B**).



# Hanging Panel Track System Installation Instructions

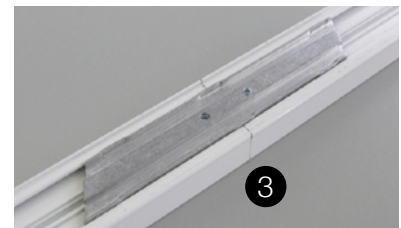
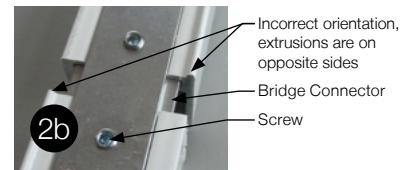
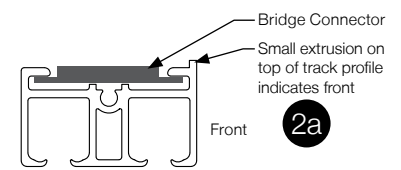
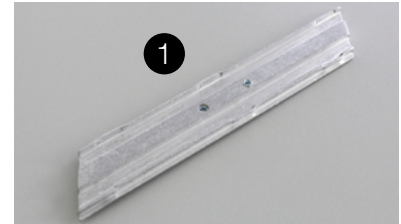
## Bridge Connector

Track longer than 8'-6" (259 cm) will ship in multiple sections. When this happens, bridge connectors are provided to connect the sections of track prior to installation.

### Installation Instructions

- 1 Bridge connector shape varies depending on number of channels in the track; the correct hardware will be provided. Installation method remains the same. In the case of Five Channel track, a combination of Two Channel and Three Channel bridge connectors will be provided and required for increased stability.
- 2 Orient the track sections so they are facing the same direction and the channels are facing down. A small extrusion on top of the track indicates the front side and should be oriented accordingly (2a). If tracks are not oriented in the same direction, the carrier hardware will not function properly (2b).
- 3 Insert the bridge connectors halfway into the slot of one track. Insert the bridge connector into the other piece of track until both sides touch.
- 4 Repeat as needed to assemble entire track length, then proceed with wall or ceiling mounted installation instructions.

Two Channel



Three or Four Channel

