

The background of the entire page is a close-up of a green, textured wall. The wall is composed of horizontal slats or planks. Between these slats, there are square cutouts or recessed areas, creating a rhythmic pattern of light and shadow. The texture of the material appears to be a fine, pebbled grain, similar to leather or a high-quality fabric.

# ARO Plank 7

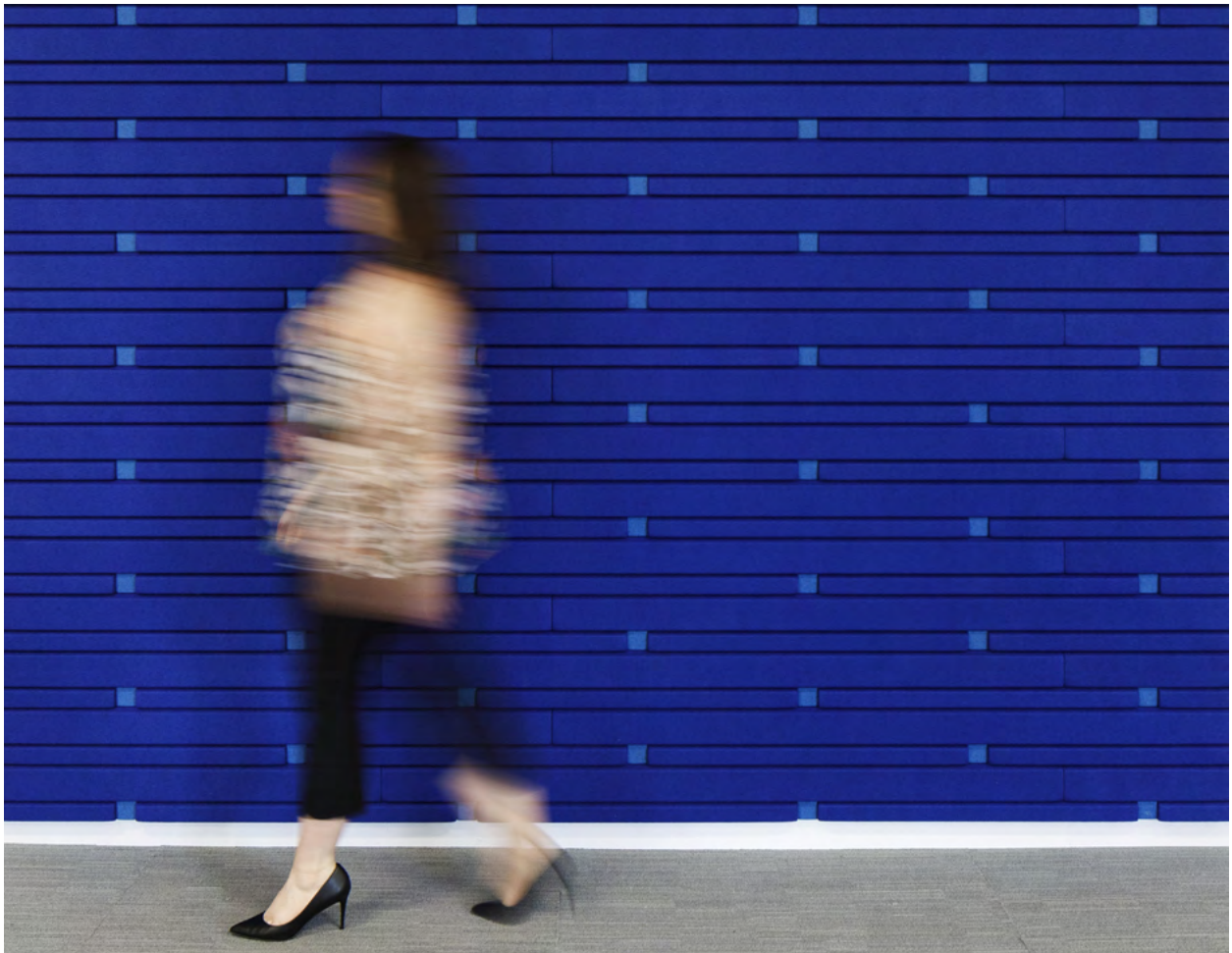
Dimensional Wallcovering

spinneybeck | filzfelt •



# About

---

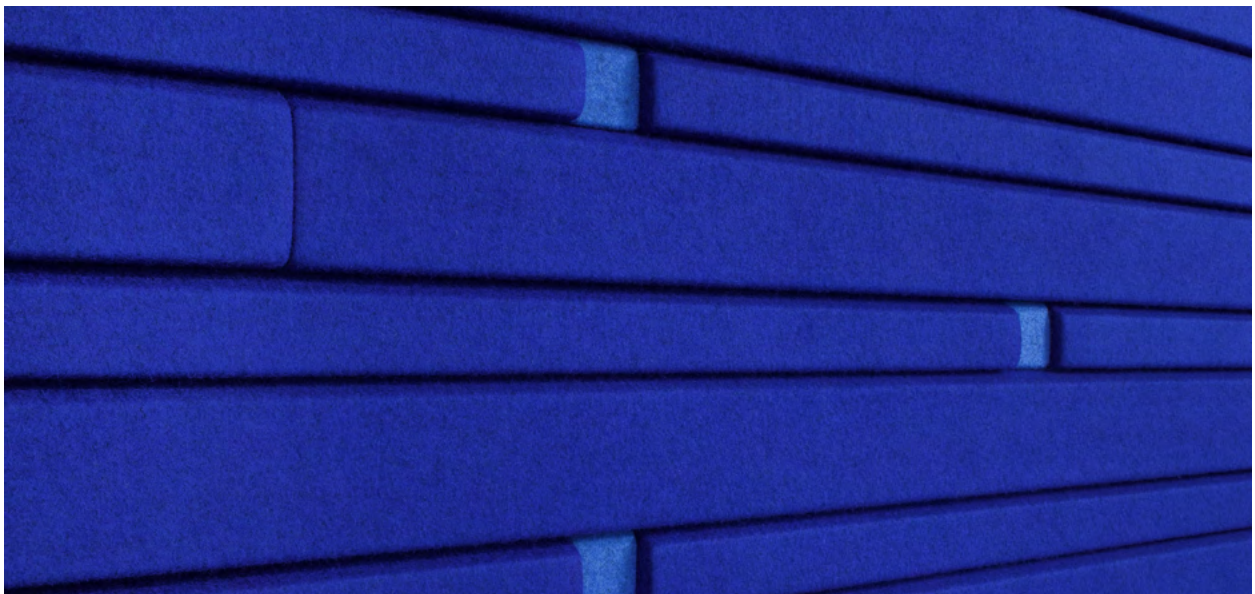
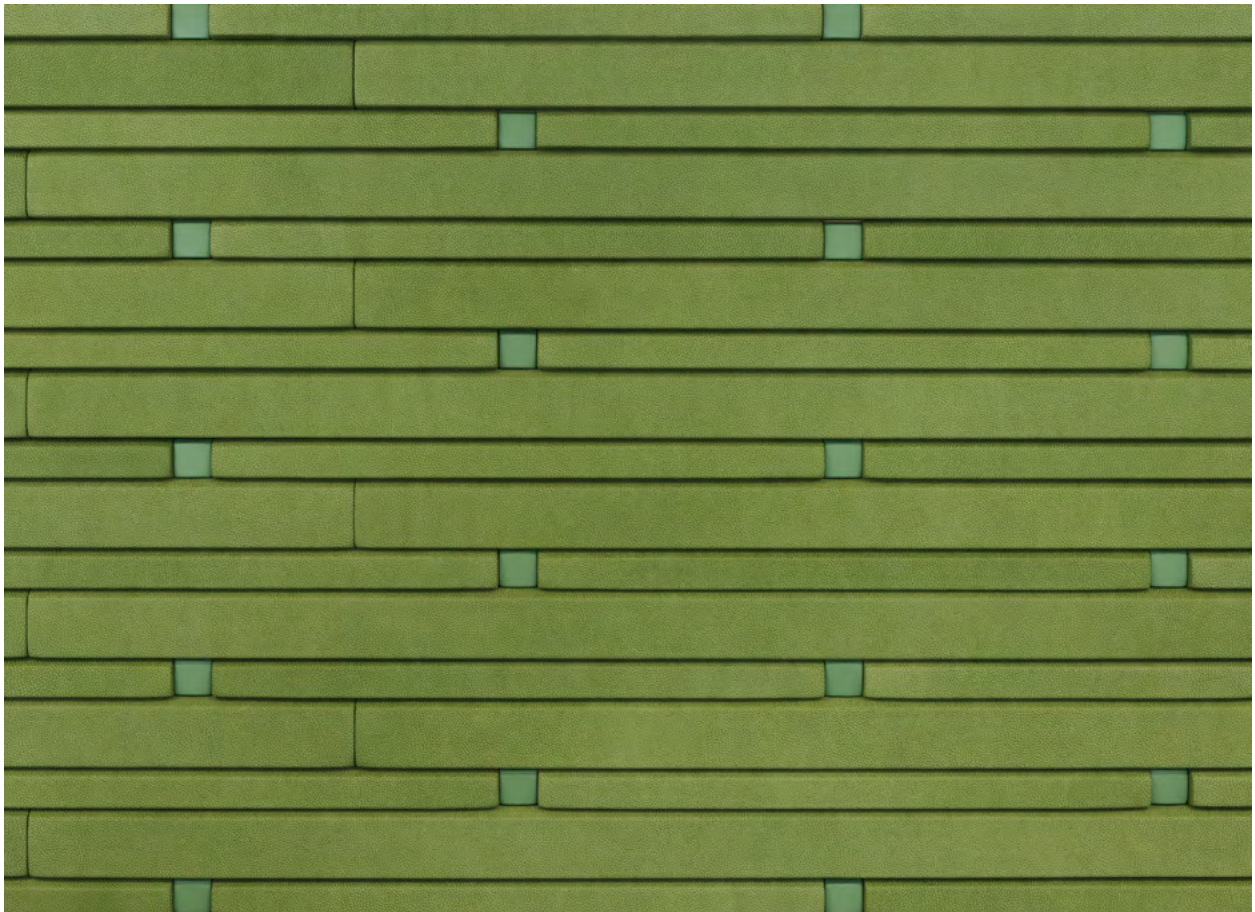


ARO Plank 7 enables sound softening and customization by switching up standard colors and a few standard components. Choose from hundreds of leather colors and over ninety felt colors for each of three distinct modules to make a wall installation that's all your own.



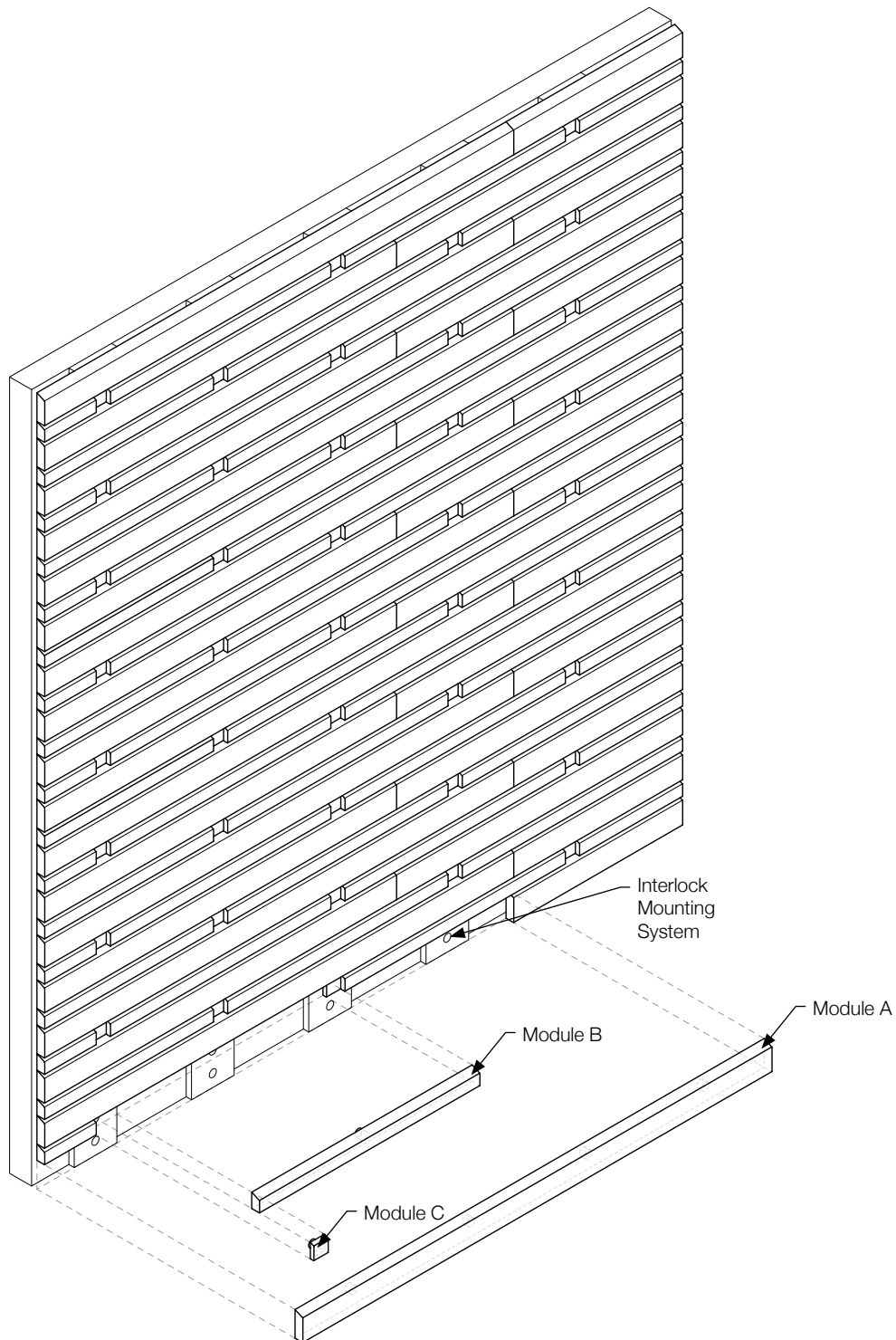
## About

---

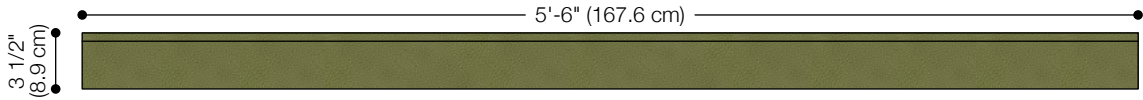


# Exploded Axonometric

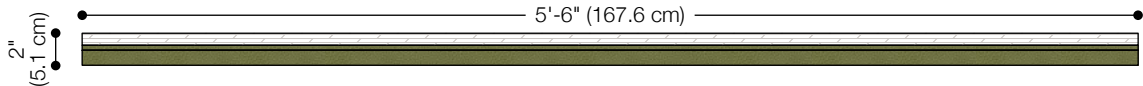
---



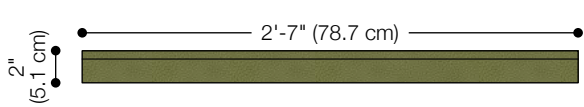
# Module Sizes



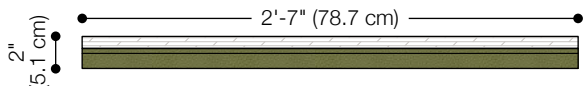
Module A Front Elevation



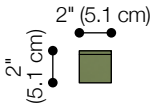
Module A Plan View



Module B Front Elevation



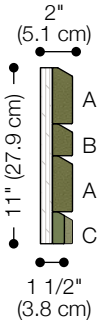
Module B Plan View



Module C Front Elevation



Module C Plan View



Modules A, B, C Side Elevation

Note: Interlock Mounting System adds 3/4" (1.9 cm) to thickness

# Standard Pattern



## ARO Plank 7.1

Modules A, B, C

Pattern Repeat Size: 7'-5 3/4" (228.0 cm) x 11 in (27.9 cm)

Module C is recessed

ARO Plank 7 comes in one standard pattern and color is shown as a suggestion only. The standard pattern may be configured with any combination of Spinneybeck leathers or FilzFelt felt colors.

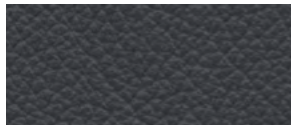
# Specifications

<b>Name</b>	ARO Plank 7
<b>Designer</b>	Architecture Research Office
<b>Content</b>	European Cowhide or 100% Wool Design Felt + Akustika 10 Substrate
<b>Thickness</b>	2 in (5.1 cm) (includes Interlock Mounting System)
<b>Module Sizes</b>	A: 5'-6" (167.6 cm) x 3 1/2" (8.9 cm) x 1 1/4" (3.2 cm) B: 2'-7" (78.7 cm) x 2" (5.1 cm) x 1 1/4" (3.2 cm) C: 2" (5.1 cm) x 2" (5.1 cm) x 3/4" (1.9 cm) Note: Interlock Mounting System adds 3/4" (1.9 cm) to thickness
<b>Standard Pattern</b>	One standard pattern may be configured with any combination of Spinneybeck leathers or FilzFelt felt colors
<b>Pattern Repeat Width</b>	7'-5 3/4" (228.0 cm)
<b>Pattern Repeat Height</b>	11 in (27.9 cm)
<b>Durability</b>	Contract
<b>Maintenance</b>	Leather: For finished leathers, wipe with a cool, damp cloth. For tougher soiling, use a pH-balanced soap and rinse. Repeat, if needed. For naked (aniline) leathers, wipe entire surface with a soft cloth and cool water to even out any abrasions or stains. Do not spot rub, for it will darken only that area. Other leather cleaners such as saddle soap or household cleaners that may contain harsh chemicals, alcohol or ink removers should never be used. Felt: Vacuum occasionally to remove general air-borne debris. Should soiling occur, spot clean with mild soap and lukewarm water. Avoid aggressive rubbing as this can continue the felting process and change the surface appearance of the felt. Refer to 100% Wool Design Felt Maintenance + Cleaning for detailed care instructions.
<b>Lead Time</b>	Made to order and certain lead times will apply
<b>Environmental</b>	100% Wool Design Felt is 100% biodegradable and Akustika 10 Substrate is 100% recyclable 100% Wool Design Felt contains no formaldehyde, 100% VOC free, no chemical irritants, and free of harmful substances 100% Wool Design Felt contributes to LEED®
<b>Installation</b>	Installs with Interlock Mounting System provided (wall fasteners not included)
<b>Variation</b>	Leather: Spinneybeck leather is a natural material and slight variations in color and thickness may be evident between dye lots or production runs. The fiber structure will vary within a hide and from hide to hide which can impact how the aniline dyes are absorbed. Full aniline leathers will have a higher variation between dye lots and therefore we cannot guarantee exact color matching. A Cutting for Approval (CFA) is always recommended for full aniline leathers. Although there can be some variation from dye lot to dye lot, semi-aniline leathers are more consistent in color and uniformity. Felt: Wool felt is a natural material and color variation and inclusions of natural fiber on the surface are evidence of the 100% natural origin of the material. Product color is only indicative, as it is not possible to assure consistency of color in a natural product due to the natural color of raw wool and absorption of dyes. Color matching cannot be guaranteed on shipments and variation will be more pronounced beyond the normal commercial range.
<b>Acoustics</b>	Felt: ASTM C 423: NRC – 0.65, SAA – 0.61
<b>Colorfastness to Light</b>	Leather: Varies—Refer to spinneybeck.com for complete specifications Felt: Class 4–5 (40 hours)
<b>Colorfastness to Crocking</b>	Leather: Varies—Refer to spinneybeck.com for complete specifications Felt: Class 3–4 (wet), Class 4–5 (dry)
<b>Environmental</b>	Oeko-Tex® Standard 100 Certified Product Class II (100% Wool Design Felt)
<b>Flammability</b>	Test reports available upon request



# Standard Leather Qualities

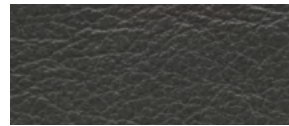
Refer to Color Book at [spinneybeck.com](http://spinneybeck.com) for complete color selection



**Andes** (AD 6026 shown)



**Alaska** (AL 5013 shown)



**Antique** (AQ 0027 shown)



**Acqua** (AU 0617 shown)



**Cascia** (CA BLACK shown)



**Copenhagen** (CO BLACK shown)



**Cervo** (CV BLACK shown)



**Derby** (DE COAL shown)



**Ducale** (DL BLACK shown)



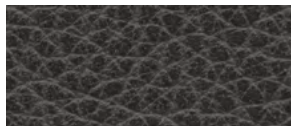
**Distressed** (DT BLACK shown)



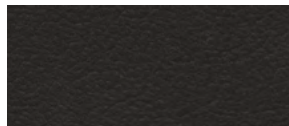
**Ducale Velour** (DV BLACK shown)



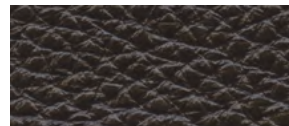
**España** (ES 8075 shown)



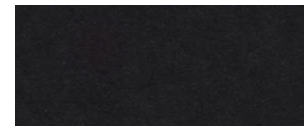
**Embossed Tipped** (ET 0189 shown)



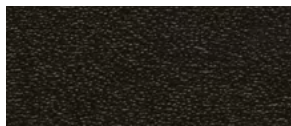
**Forte** (FE BLACK shown)



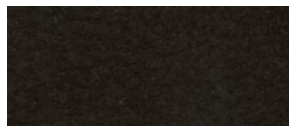
**Hand Tipped** (HT 1519 shown)



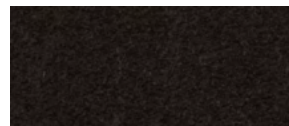
**Lucca** (LC BLACK shown)



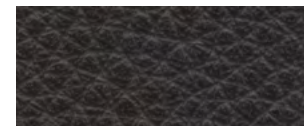
**Lucente** (LU BLACK shown)



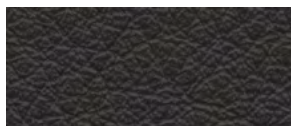
**Marissa** (MA BLACK shown)



**Maremma** (MM BLACK)



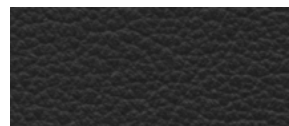
**Portofino** (PT BLACK shown)



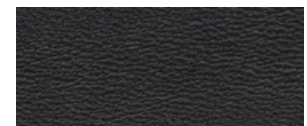
**Riva** (RA BLACK shown)



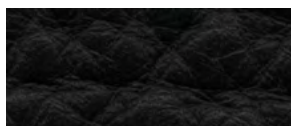
**Rugata** (RU BLACK shown)



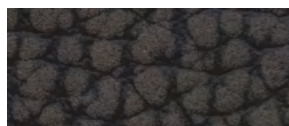
**Sabrina** (SA BLACK shown)



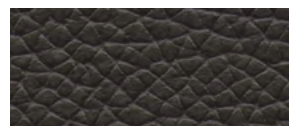
**Saddle** (SL 0067 shown)



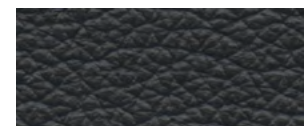
**Sassolino** (SS BLACK shown)



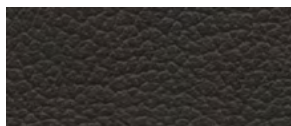
**Umbria** (UM 1464 shown)



**Volo** (VO BLACK shown)



**Velluto Pelle** (VP BLACK shown)



**Vincenza** (VZ BLACK shown)



# Standard Felt Colors

							
487 Pfirsich	023 Koralle	945 Drachenfrucht	221 Himbeere	136 Weinrot	209 Bordeaux	102 Kirsche	201 Rot
							
125 Tomate	179 Hellrot	180 Terracotta	173 Mango	105 Rost	573 Kupfer	116 Orange	495 Abricot
							
124 Gelb	131 Honig	509 Kamel	550 Ocker	274 Senf	108 Zitrone	403 Mais	535 Sesam
							
203 Vanille	027 Kartaue	384 Lind	713 Kiwi	377 Maigrün	732 Farn	378 Oliv	260 Sprießen
							
156 Loden	343 D'Grün	435 Smaragd	625 Pinie	248 Jade	472 Minze	575 Salbei	483 Adria
							
548 Türkis	312 Lagune	345 Pazifik	308 Petrol	698 Dunst	405 Stahl	215 Meer	540 Ozean
							
533 Indigo	282 D'Blau	111 Traube	626 Azur	647 Kobalt	686 Enzian	272 Royal	286 H'Blau
							
995 Wasser	458 Bewölkt	284 Himmel	613 Gletscher	551 Eis	113 Immergrün	099 Lila	667 Amethyst
							
242 Pink	640 Granat	634 Erröten	671 Pfingstrose	255 Flieder	269 Violett	437 Aubergine	250 Truffelbraun
							
220 Rehbraun	411 Alpaka	190 Natur-meliert	200 Natur	331 Sahara	311 Mandel	467 Sand	481 Sandstein
							
100 Wollweiß	110 Rohweiß	160 Beige	529 Champagner	150 Weiß	428 Silber	427 Stein	021 Beton
							
170 Asche	423 Hellgrau	408 Taupe	175 Graphit	425 Taubengrau	446 Kohle	300 Anthrazit	426 Schwarz